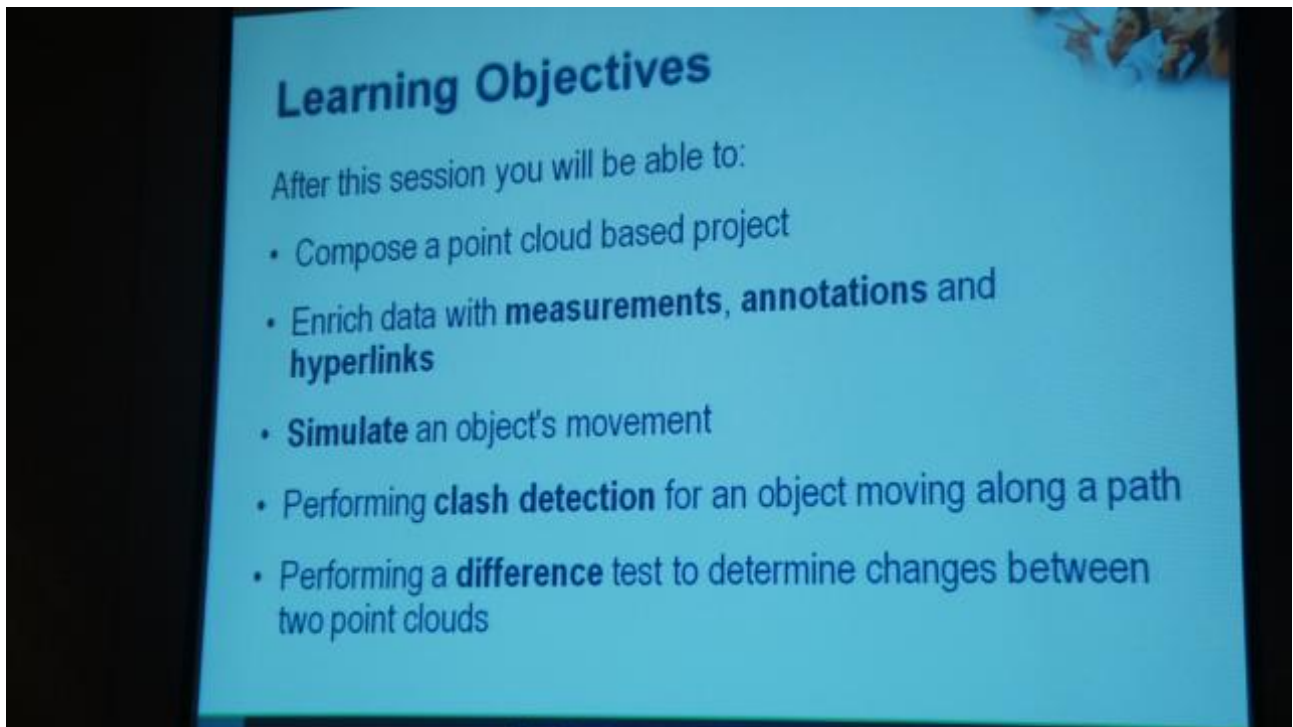


BeLEARNING 2013 - GeoSpatial

BeLEARNING 2013 GeoSpatial rejserapport

BeTogether var i år blevet omdannet til en 'Learning Conference'! Forskellen bestod mest i at hovedkeynotesne var fjernet og hver indlæg startede med en opremsning af hvad man skulle lære af dette indlæg / workshop. Sidst efter indlægget kom der så et antal (meget banale) kontrol spørgsmål man skulle svare på i set learning pass. Som oftest blev de korrekte svar givet og det rygtedes at man fik sine 'learning point' uanset om man svarede rigtigt eller forkert. Jeg har efterfølgende konstateret at jeg har modtaget 'learning points' for samtlige sessioner og workshops jeg var tilmeldt uanset at jeg faktisk ikke oprettede, udfyldte eller afleverede noget 'learning pass'



Altså et stor stort cirkus nummer -- Men til hvad nytte ?

Der kan gives flere forklaringer på ændringerne:

- Der er ikke nær så mange nyheder i år som de foregående år.
- Konference feen er sat væsentligt op over de sidste år, men samtidig gjort gratis for deltagere der har et Learning abonnement –enten personligt eller gennem et firma dækkende abonnement. Der er gennemgående meget fokus på efteruddannelsesværdien af konferencen, også målt i disse her learning units



BeLEARNING 2013 - GeoSpatial

- Rygterne sagde at BeTogether vil blive afløst af regionale konferencer, også med fokus på 'Learning', så måske skal vi til at se regional Bentley bruger konference i Europa. ? !!

Har man adgang til Online Learning kan man se de fleste af sessionerne her:

<http://learn.bentley.com/app/Public/ViewLearningPathDetails?lpld=104226>

Hvad nyt så!

Selv om det var en Learning konference var de gamle kendte sessioner med "Hvad nyt er der er i <produkt navn> og Geospatial RoundTable .

Bentley Map SS4:

Bentley Map V8i (SELECTseries 4)

- Mapping
 - Cartographic Representation
 - Complex line symbols with intersection management
 - Bridge symbology
 - Support Dynamic Criteria/Scale Based Map Visualization
 - Create Map model in any model
 - Set display scale per view
- Interoperability
 - Esri File based Geodatabase support
 - CityGML - Support material / textures on import/export with FME
- Engineering
 - Survey data import, adjustment, surface creation
 - Many improvements for Map Enterprise from Descartes
- Oracle Spatial Improvements
 - Support for Oracle Spatial Textures
 - Support Non-Top View Queries of 3D Data
 - Oracle 12c - Support B-Spline Curves and Non-Circular Arcs
 - Support Composite (multiple columns) Primary Key
 - Support Views As Sub-Features
- API
 - Custom symbology callbacks - new symbology event system allows application to provide symbology
 - Application owned business properties
- Availability: Q4 - 2013

The Bentley LEARNING Conference

Som det ses er det i høj grad Oracle der sætter dagsorden, og Oracles Vice President fik også lov at snakke en halv time under Geospatial Keynotes. Oracle understøtter nu også ellipsoide buer, B-splines (men ikke den almindelige form for splines som landmålere bruger), Rasterdata i store mængder via tiles, textures på bygninger. Desværre ser det ud til at fokus omkring Oracle Spatial database har medført at den lovede PostGIS spatial database connection er skudt ud over både SS4 og SS5 –mest sandsynlig er at den er droppet.

BeLEARNING 2013 - GeoSpatial

Landmålingsdata (Survey data import) er annonceret i SS4 men der kom ikke et pip om hvordan modulet der stammer fra InRoads skulle integreres med den eksisterende XFM datastruktur og GeoSpatial Administrator.

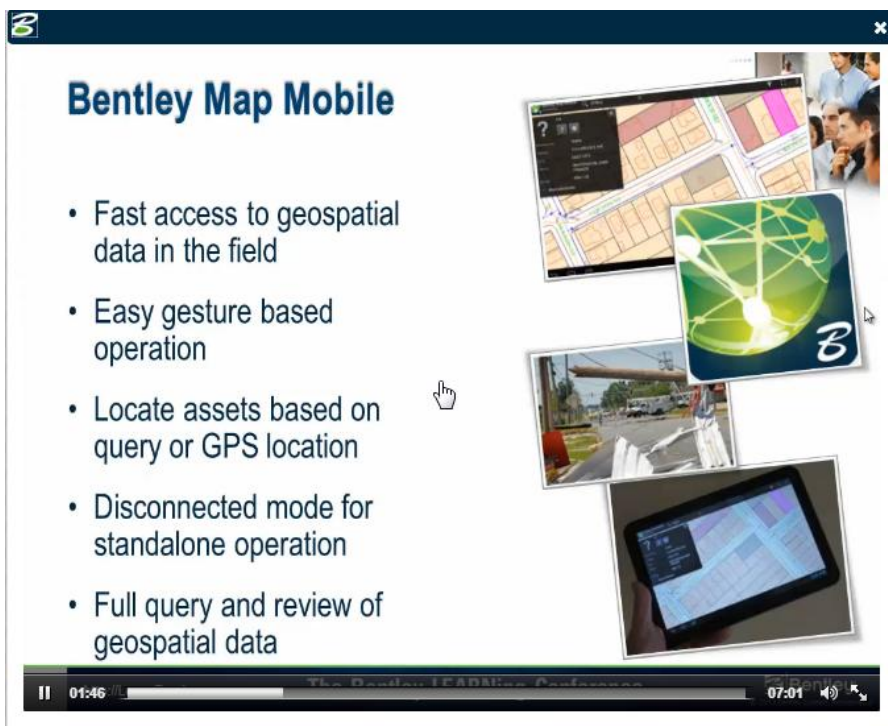
En nyhed der måske kan blive til glæde er understøttelsen af ESRI's Gpx format. GPX er en form for databaselignende sammenføjning af shapefiles data.

Bentley Map SS5 , 2014 og videre -- hvad der blev nævnt under GeoSpatial RoundTable:

- Project Vancouver dvs. 64 bits version
- Bedre integration med CIVIL produkter
- Flere Spatiale database forbindelser på samme tid
- Noget om features som jeg desværre ikke kan tyde i mine noter
- Noget om Network Analyze som jeg heller ikke kan tyde
- Noget om Spatiale Databaser, ja som ikke lader sig tyde
- Og sidst noget jeg slet ikke kan tyde ☹

Bentley Map Mobile

Årets eneste rigtige nyhed. Et View program til Tablets. På nuværende tidspunkt (Beta test) kun til Android, ved officiel release vil en iPad version også forefindes mens Windows 8 kommer så snart Bentleys Core Mobile API er færdig til Win8 (..og det er det ikke og ej heller til Symbian60 !!)

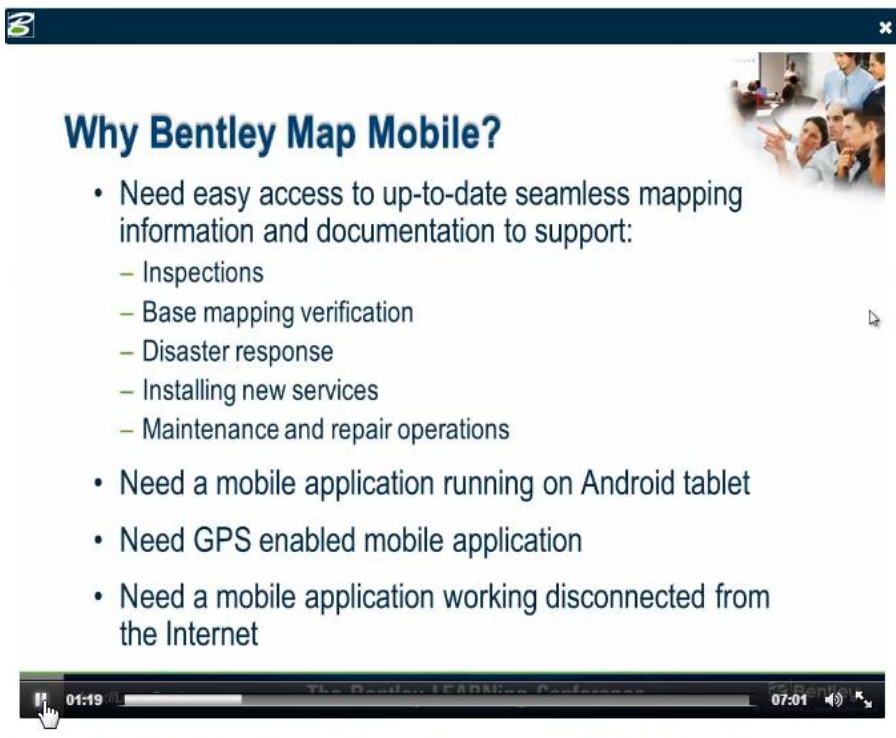


Bentley Map Mobile

- Fast access to geospatial data in the field
- Easy gesture based operation
- Locate assets based on query or GPS location
- Disconnected mode for standalone operation
- Full query and review of geospatial data

The slide features a central graphic with a green network icon and a 'B' logo, surrounded by images of a desktop map application, a street view, and a tablet displaying the same map interface. A hand cursor points to the text on the slide.

BeLEARNING 2013 - GeoSpatial



Why Bentley Map Mobile?

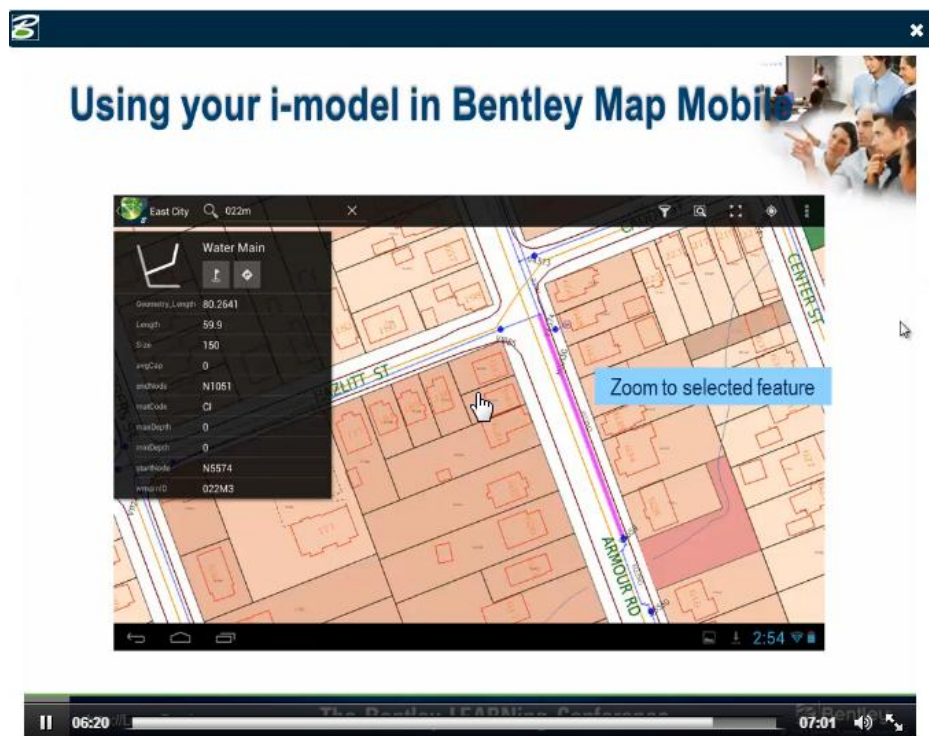
- Need easy access to up-to-date seamless mapping information and documentation to support:
 - Inspections
 - Base mapping verification
 - Disaster response
 - Installing new services
 - Maintenance and repair operations
- Need a mobile application running on Android tablet
- Need GPS enabled mobile application
- Need a mobile application working disconnected from the Internet

01:19 07:01

Herunder ses et skærmbillede fra Bentley Map Mobile.

1st udgave vil være View Only, men senere vil opdatering af data (Properties) blive mulig og måske senere opdatering af features, herunder oprettelse af nye.

Den nuværende udgave forstår kun de koordinat systemer der er i standard library'et . Så da vi alle bruger "Danske koordinatsystemer.dty" filen har Bentley endnu et problem med danskerne ☺



Using your i-model in Bentley Map Mobile

Water Main	
Geometry_Length	80.2641
Length	59.9
Size	150
mgCode	0
matCode	N1061
matCode	Cl
matDepth	0
matDepth	0
startNode	N5574
matID	022M3

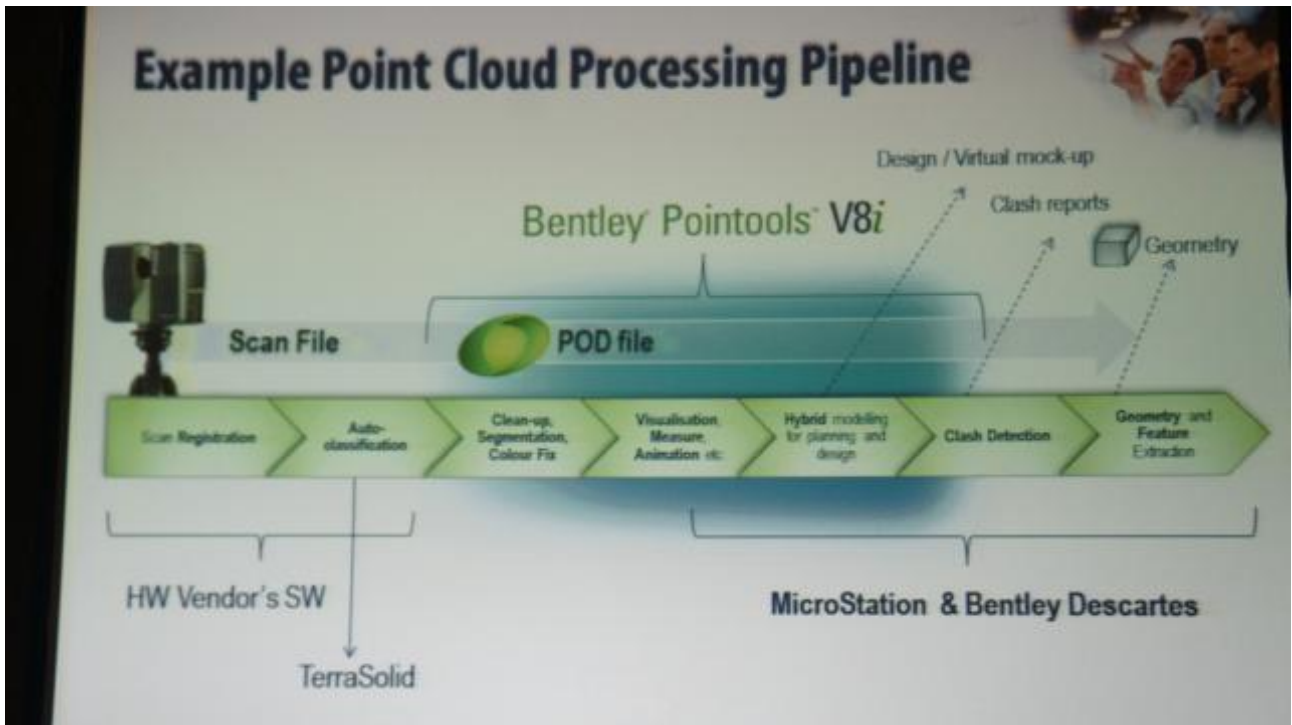
Zoom to selected feature

06:20 07:01

BeLEARNING 2013 - GeoSpatial

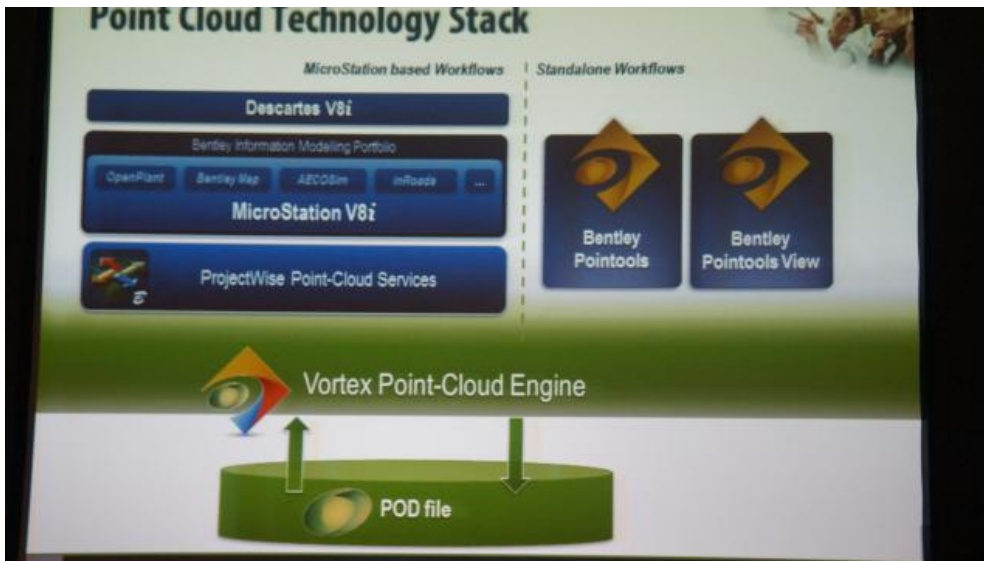
Bentley Descartes

Descartes er allerede ude i en SS4 release, hvilket gør at den **ikke** kan fungere ovenpå en Bentley Map SS3 eller en MicroStation SS3. Som nævnt ovenfor kommer Bentley Map først i en SS4 udgave i sidste kvartal – hvor Descartes så kommer i en SS5 !!



Som det ses er der et vist overlap mellem Pointools og Descartes, det er dog først i Descartes SS5 at der for alvor kommer Pointools funktioner over i Descartes.

BeLEARNING 2013 - GeoSpatial



Bentley Descartes SS4 nye features:

Point Clouds Integrated into Information Modeling Workflows

- **Point-cloud class management**
 - Class management enables users to control which classes are shown or hidden with any presentation style
- **Presentation style manager**
 - Users can configure new presentation styles and save them in a style manager - they are also able to combine multiple shaders in a single view to improve object recognition
- **Definition of custom classes**
 - Users can now create their own classes and are no longer limited to the 13 classes of LAS
- **Clip and section manager**
 - This new capability allows users to create, save, and manage clips to define areas of work
 - Users can also create, save, and manage sections to isolate points in regions of interest and to automatically configure views
- **Geo-coordination for point clouds**
 - The integration of point clouds from different coordinate systems is now possible
 - Users can reproject point clouds using their choice of the physical or on-the-fly reprojection mode
- **Linear feature extraction**
 - Linear feature geometries, such as rail, tunnel, or road feature types, can now be extracted
- **Scalable Terrain Modeling**
 - New viewshed tool - show terrain visible from a selected point or along a path
 - Export selected area to MicroStation terrain model at 1:1 scale

Bentley Descartes SS5 hvad der blev nævnt under GeoSpatial RoundTable:

- Pipe extraction
- Clash detection
- More Geo Coordinatesystems

BeLEARNING 2013 - GeoSpatial

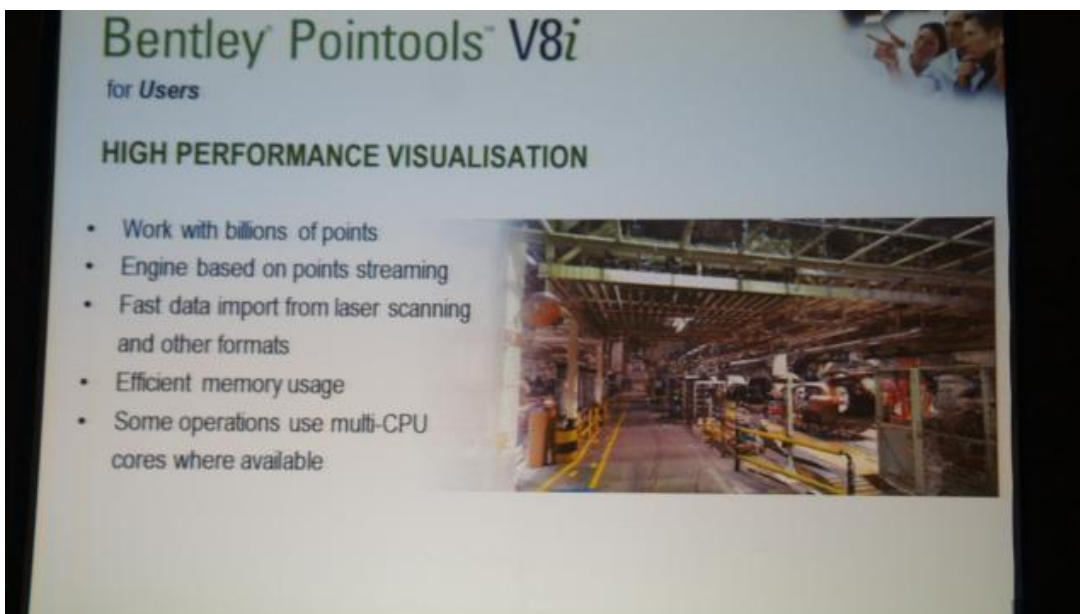
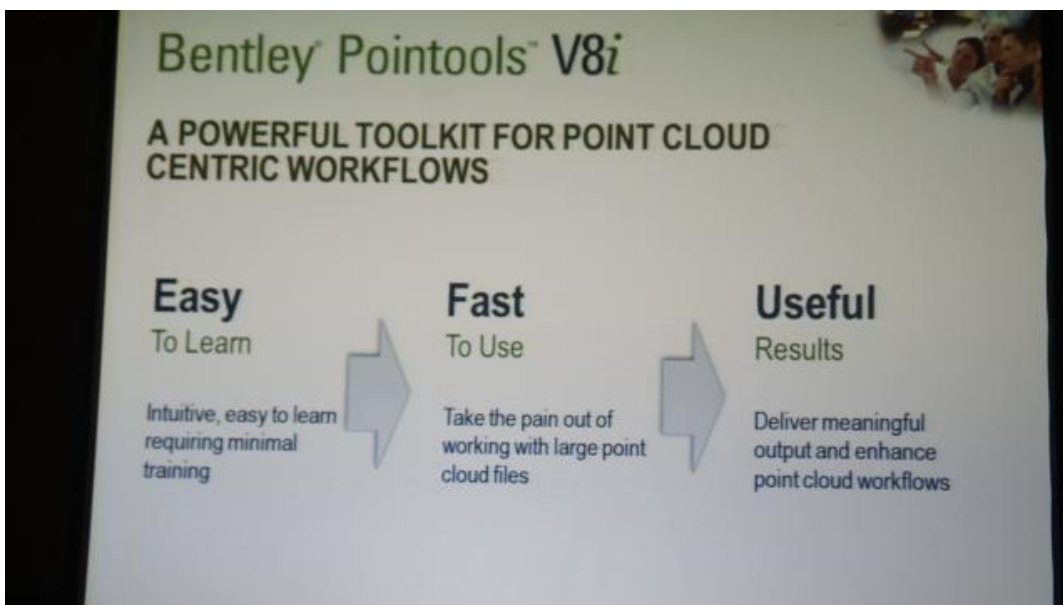
2014 og videre

- Project Vancouver dvs. 64 bits version
- Descartes funktionalitet lægges ud i de forskellige branche systemer: Map, Civil, Plant etc.

Pointools

Egentlig er der ikke en update af Pointools idet nu er Pointools så blevet til **Bentley Pointools V8i**

Her er så lidt af gennemgangen:



BeLEARNING 2013 - GeoSpatial

Bentley Pointools Vol
 for Users

FAST LAYER-BASED EDITING

- Up to 128 layers
- Fast point selection tools
- 3D brush selection
- Color-layers for easy identification
- Layer extraction from classification

<http://Learn.Bentley.com> The Bentley LEARNING Conference

Bentley Pointools Vol
 for Users

NON-DESTRUCTIVE WORKFLOW

- Work fluidly at view density
- Operations are stored
- Reapplied on export

<http://Learn.Bentley.com> The Bentley LEARNING Conference



BeLEARNING 2013 - GeoSpatial

GEOspatial meeting in Philly may 13th 2013

Agenda

1. The high numbers of 'bugs' in the Select Service 3.

Both Bentley Map and MicroStation. What happened? What is fixed in service release 107 and what are still problems?

Erik to send link to BentleyUserDk GeoSig bug-list-sheet to Jeff and Keith, and ask contributors to check whether the problem still exists. And maybe translate Danish text to English.

Jeff and Keith will look to the problem list

The Ninth-Open-file crash is needed to be documented.

2. The promised enhancement in SS3:

WFS became read-only and there are still problems accessing some WFS servers. Survey data import not in a useable release and last but not least the PostGIS spatial database connection announced to come in a service release before next Select Service (SS4) will it then be a part of SS4 ?

Wfs will properly not come in a transaction version. Bentley is working on some connecting issues still, but Wfs-servers out there are very different and not always comply with standards. BMap has strongly defined feature classes and therefore more strict than most lazy happy-go-lucky gis-programs.

PostGIS connection is more wanted than a Wfs(t) capacity.

3. PlotScale vs. AnnotationScale.

Will we see a convergence in the future or can we be sure that BMaps plotScale and AnnotationScale will coexist. In a mixed environment they are not working well together :-)

PlotScale are not to be replaced with AnnotationScale in the near future, although there are considerations for merging them in BMap. For a mixed environment a possibility to turn off plotScale and work with AnnotationScale in BMap could be the solution.

4. Geospatial platforms and license.

Over the years there have been a number of alterations in the Geospatial platforms: GeoOutlook, PowerMap, PowerMapField, Bentley Map Standalone and now Bentley Map PowerView and Bentley Map Mobile. This combined with different license policy in aspect with MDL/ C -native programs.

The present list of BMap products is supposed to stay unchanged for several years now. None of Jeff and Keith finds it 'funny' to change packages --it lot of work with no gain. It my conclusion that packages change has come from above.

5. Bentley Map Mobile.



BeLEARNING 2013 - GeoSpatial

What are the further plans (features like property updating, redlining, and raster background wms/wtms), will there be a BMapMob API or will tablet programming be solely on basis of Bentley Mobile Api.

The first commercial release will have raster background maps. In fact it is already in the Beta release on Android but not in the BMapMob publisher beta version. Redlining and property updating will be in an upcoming release. Wms and Wtms are not in the plans yet.

Concerning the API there will be a standard mobile API and on top of that a map mobile API. Same way as the API for map in vba /c# and mdl.

The next major release will be for iOS with the same functionality as the current Android app.

6. GeoSpatial Administrator.

Possibility to develop User enhancement for showing and editing 'private' data on features and properties. (Issue I have dialog with Jeff on)

Jeff explained about the 'secret' api and Xml setup that makes it possible to have private data in the GSA with display and edit possibilities.

7. Misc.

If somebody comes up with a last minute Pointools or Descartes issue.

Any news on what will come in the SS4 both for users and application developers.

Lectures from GeoSpatial track in BeLearn will they be recorded and uploaded to the Learn Server.

Beniot Fredericque explained about the coming point cloud capabilities in Descartes, starting with ss4:

Clash detection, more pipe recognizing tools....

Clash detection will both be present in Pointools and Descartes, but will be slightly different

For at blive lidt i Learning tankegangen er der her en lille tjek opgave. I ovenstående rapport er der indsat en overlagt fejl. Den første der sender mig en mail med angivelse af denne fejl og begrundelsen herfor vil modtage et stykke chokolade, om ikke før så på årsmødet.