



OpenPlant

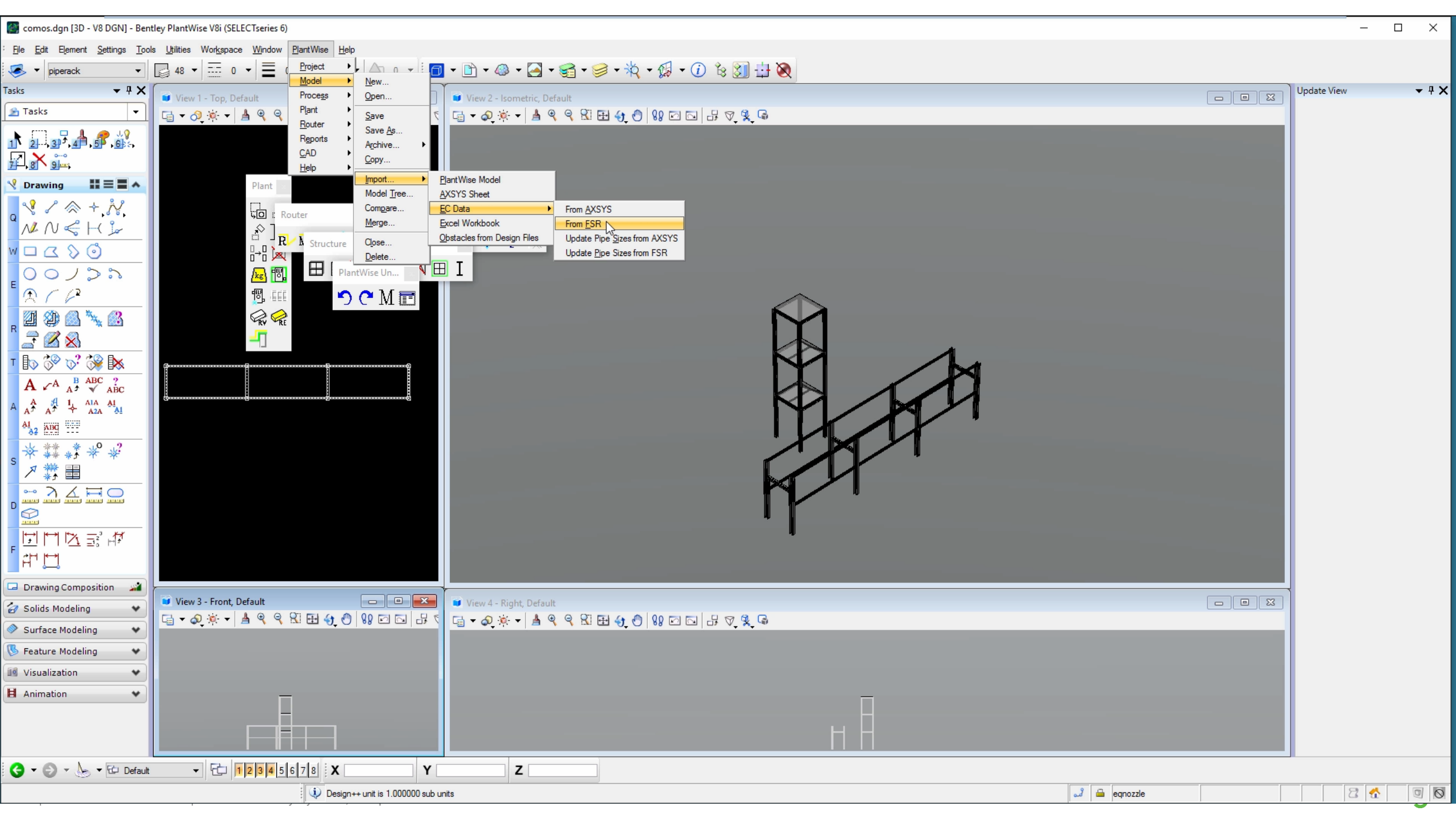
Interoperability with COMOS



Interoperability with COMOS - Optioneering

COMOS FEED – Bentley PlantWise

- Place parametric piperacks
- Import Equipment and Pipeline tags
- Define or import Equipment sizes and locations
- (Auto) Nozzle
- Autorouting pipelines
- Review reports



Tasks Pipeline List

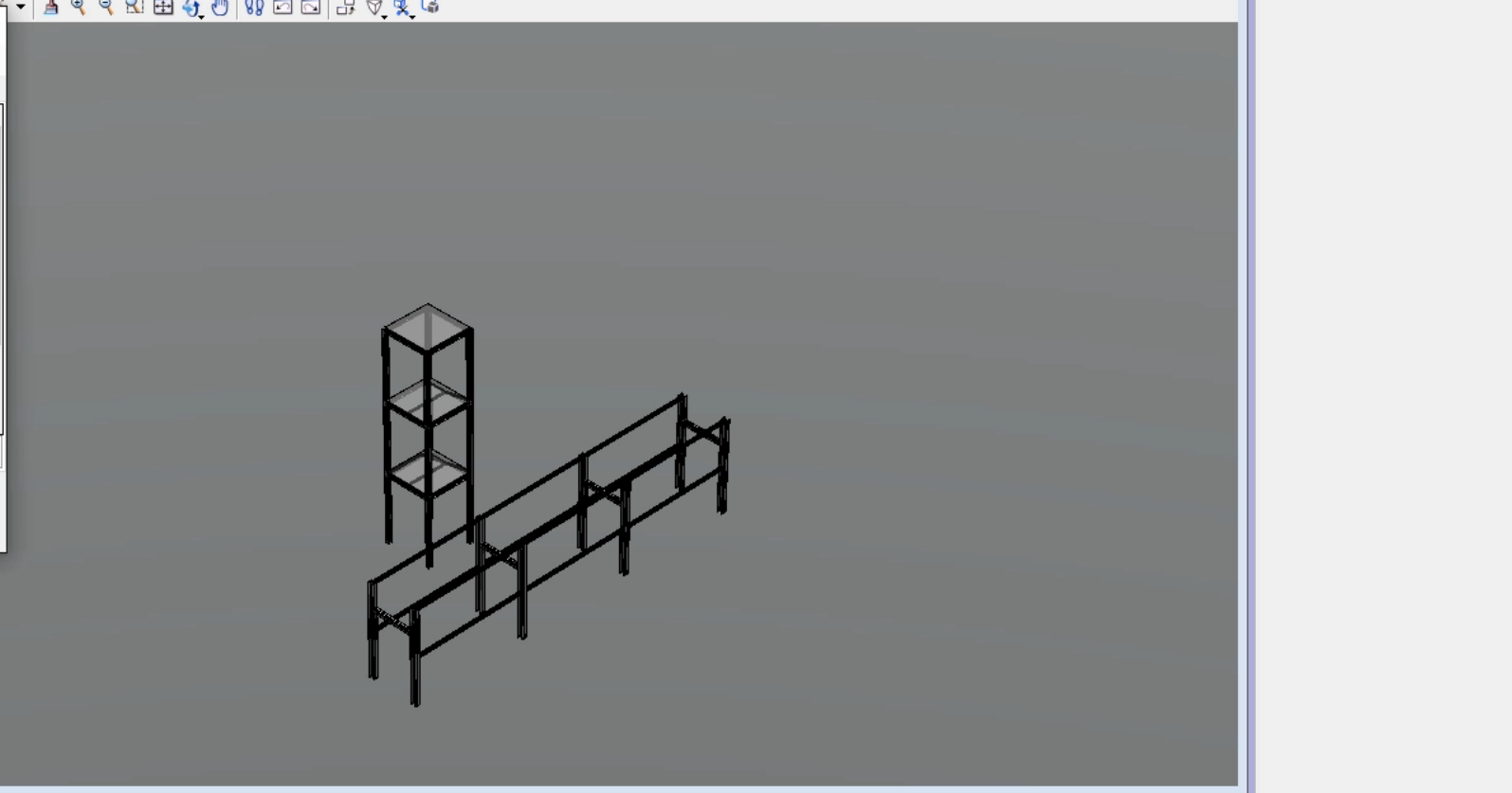
File Edit Display

Equipment Nozzles Pipelines Cables Boundaries Named Inlines

Line ID	Diameter	Specification	Bending Radius	Origin	Terminus	Un ^
1	100	NONE	1.5D	HEX001/N	VES001/N-1	
2	100	NONE	1.5D	VES001/N-2	PUM001/N-2	
3	100	NONE	1.5D	PUM001/N-3	DEST1/N-4	
5	350	NONE	1.5D	DEST1/N-5	HEX001/N-5	
6	100	NONE	1.5D	DEST1/N-6	HEX002/N-6	
7	100	NONE	1.5D	HEX002/N-7	DEST1/N-7	
8	50	NONE	1.5D	FL-1/N-8	DEST1/N-8	
9	100	NONE	1.5D	VES001/N-9	9-Terminus	
10	100	NONE	1.5D	HEX002/N-10	10-Terminus	
11	200	NONE	1.5D	GL-R/N-11	FL-1/N-11	

Row: 1 of 12

OK Cancel Apply



The main 3D view shows a wireframe model of a vertical tower with three levels and a long staircase with a handrail. The interface includes a top toolbar with various icons, a left sidebar with tool palettes, and a bottom status bar with coordinate fields.

Equipment Editor - DEST1

File Edit Display

Tag: DEST1

Equipment Nozzle Pipeline Cable Boundary Control Valve Flow Element Pressure Safety Valve

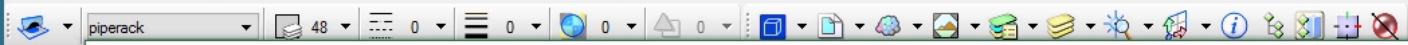
Common Properties

Equipment Type	Tower
Description	EntityId: 174: CONCEPTUA
Unit ID	
Origin X	
Origin Y	
Origin Z	0.0 m
Direction	N
CAD Level	equipment

Class Specific Properties

Height	
Section Diameter	

OK Cancel Apply



COMOS-import.xlsx - Excel

Excel ribbon with tabs: FILE, HOME, INSERT, PAGE LAYOUT, FORMULAS, DATA, REVIEW, VIEW. Home tab options include Clipboard, Font, Alignment, Number, Styles, Cells, and Editing.

Tag	Description	Unit ID	X	Y	Z	Direction	CAD Level	Section Diameter	Height	Mp_Empty_Weight	Mp_Empty_Cgx	Mp_Empty_Cgy	Mp_Empty_Cgz	Mp_Empty_Mx	Mp
DEST1	EntityId:174: CONCEPTUAL_TOWER		6.5	12.0	0.0	N		(1500)	9.5						

Navigation bar with tabs: Tower, Vertical Vessel, Shell and Tube Exchanger, Separator, Reactor, Horizontal Pump.

READY 100%

Visualization and Animation controls.

X 11.8579 Y -1.1805 Z 10.0566

Done Deleting Boundaries

Tasks

Tasks

Drawing

Q

W

E

R

T

A

S

D

F

Drawing Composition

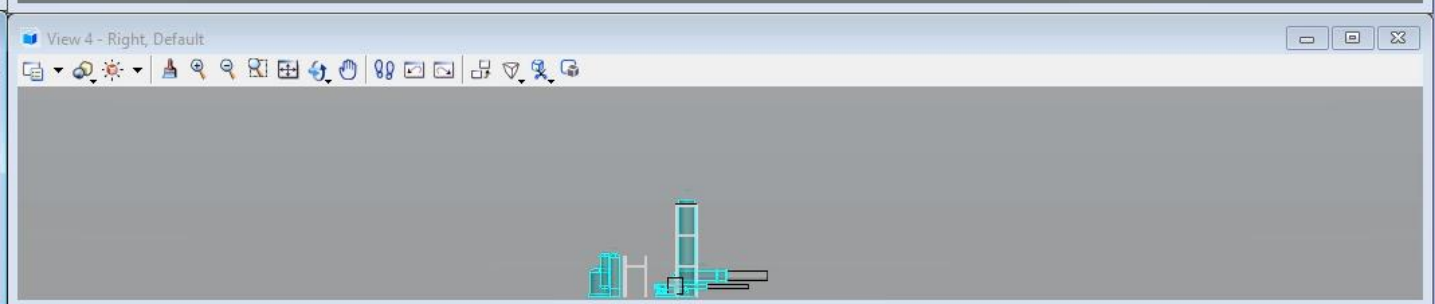
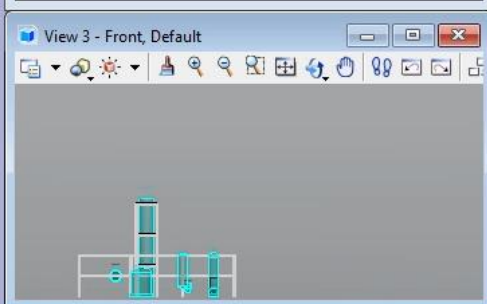
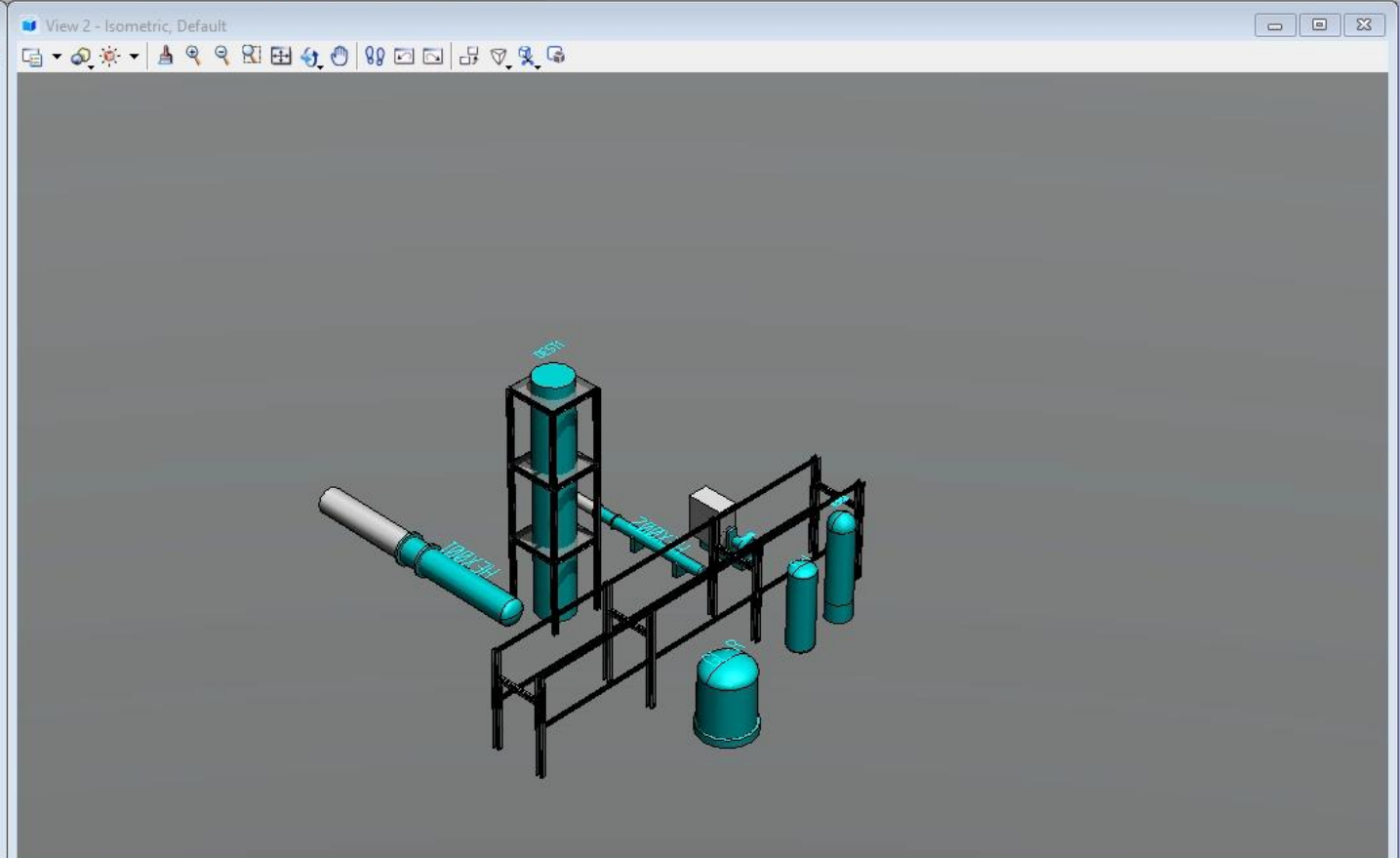
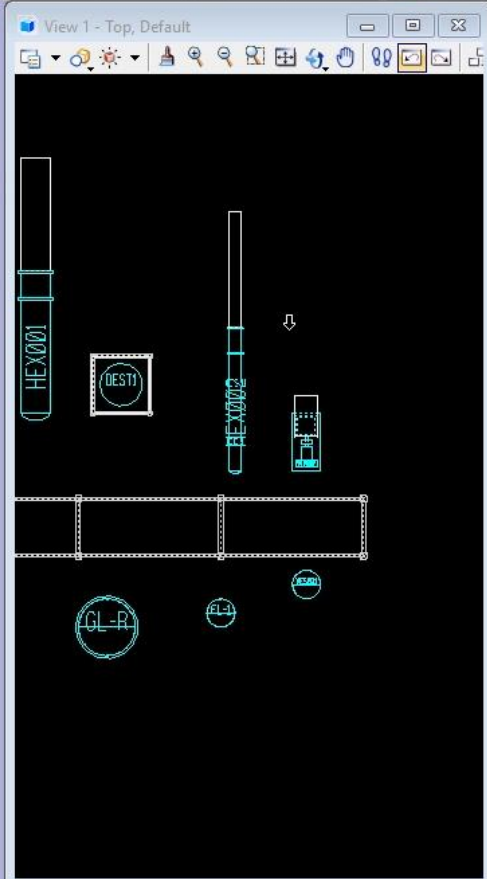
Solids Modeling

Surface Modeling

Feature Modeling

Visualization

Animation





Tasks

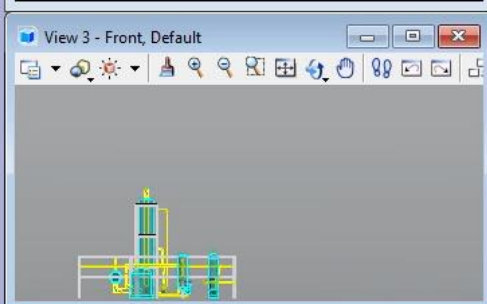
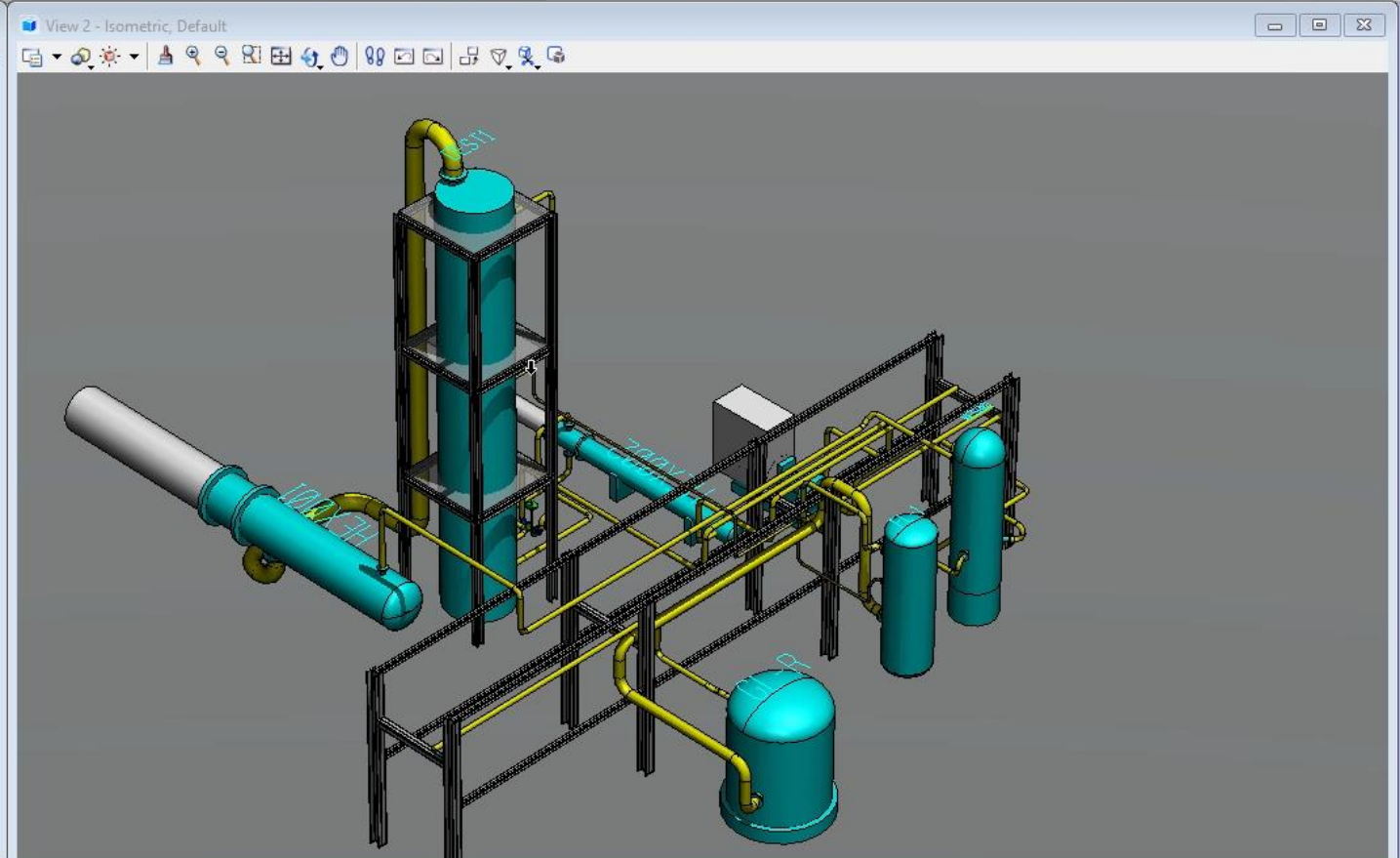
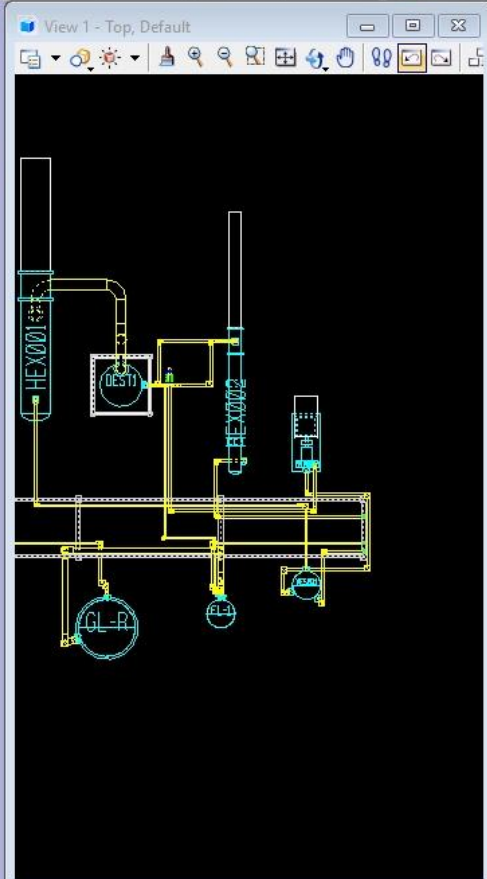
Tasks

Drawing

- Q
- W
- E
- R
- T
- A
- S
- D
- F

Drawing Composition

- Solids Modeling
- Surface Modeling
- Feature Modeling
- Visualization
- Animation



Report List

Report	Combined	Xml	Filter	Comment
dpar-connectivity-export				
dpar-CWP-WBS-report				
dpar-element-report				
dpar-equipment-export				
dpar-inline-export				
dpar-mto-export				
dpar-mto-report				
dpar-nozzle-export				
dpar-pipeline-export				
dpar-reducer-report				
dpar-sample-cost-report				
dpar-sample-flange-quantities				
dpar-steel-report				
drv-cv				
drv-eq				
drv-fe				
drv-line				
drv-nozzle				
drv-psv				
drv-reducer				
drv-structure-member				
drv-tee				
drv-udi				
flange-count				
mass_property_export				
mass_property_export				
MTO-By-Volume-And-Category				
dpar-mto-report				
Off-PW-mto-report				
On-PW-mto-report				
Pipeway-pipelines				
sample-flange-report				
sample-model-cost	X			
sample-steel-cost				
pw-structure-pml-updated				A file to export pipeway steel elements to Integraph PML format
unrouted_pipes				

Show Edit Close

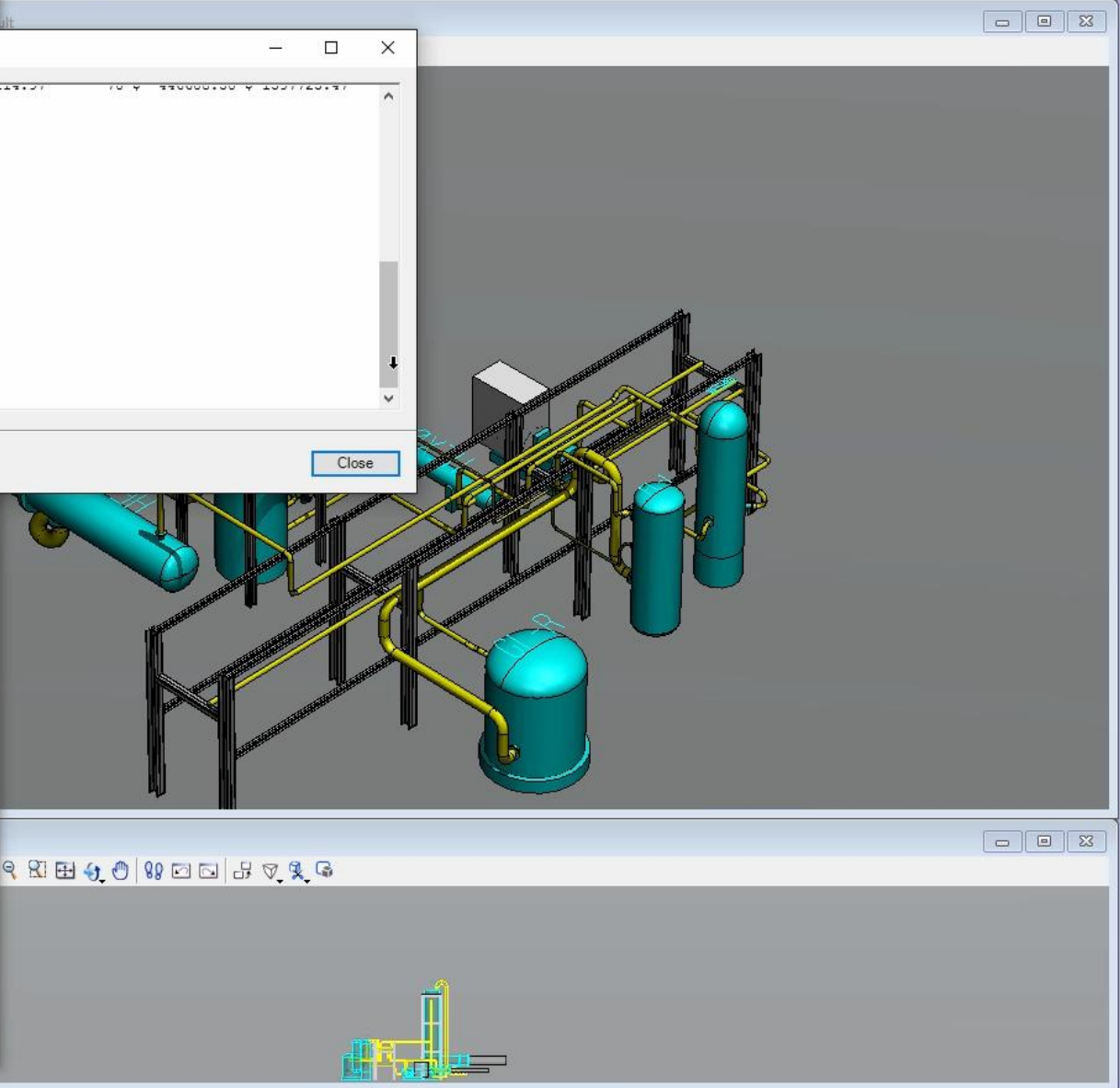
Report Writer Output: Sample-Model-Cost

ALL STRUCTURAL MEMBERS

designatio	weight	total cost
W100X19	1717 \$	1717.16
W130X28	1564 \$	1564.05
W150X30	4994 \$	4994.30
W200X100	4828 \$	4827.52
	13103 \$	13103.03

Pipeline Cost = \$ 1151114.97
Elbow Cost = \$ 446608.50
Steel Cost = \$ 13103.03
Total Model Cost = \$ 1610826.50

Output to File Close



Interoperability with COMOS – Detail 3D

COMOS PID to OpenPlant Modeler

- Publish i-model in for PID in COMOS
- Attach PID i-model to 3D model
- Place Equipment re-using process data
- Create Pipelines re-using process data
- Route Pipelines
- Produce deliverables (ortho and iso drawings, BOM)
- Send 3D – 2D differences back to COMOS

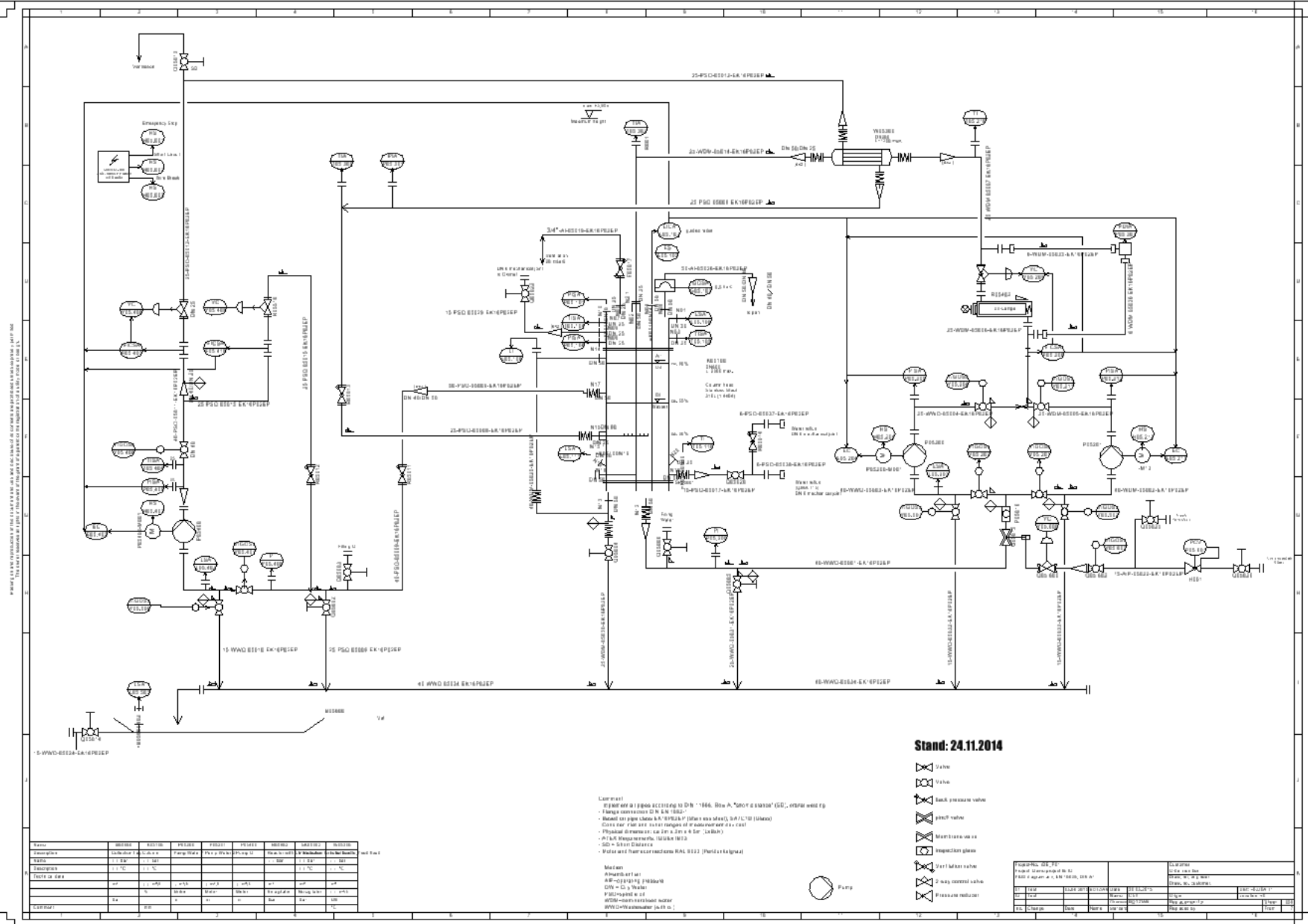
Consistency Checker - =0.D0A.T1....

- Area
- Equipment
- Instrument
- Pipeline
- Plant
- Service
- Subunit
- System
- Unit

Active

Cannot display content

Tasks Items



Stand: 24.11.2014

- Valve
- Valve
- Back pressure valve
- pinch valve
- Motorized valve
- Impedance plate
- Start lock valve
- 2-way control valve
- Pressure reducer

Legend:

- 1- Pump
- 2- Back pressure valve
- 3- Pinch valve
- 4- Motorized valve
- 5- Impedance plate
- 6- Start lock valve
- 7- 2-way control valve
- 8- Pressure reducer

Code	Symbol	Name	Unit	Material	Remarks
1	[Pump Symbol]	Pump	m³/h	Stainless Steel	
2	[Back Pressure Valve Symbol]	Back pressure valve		Cast Iron	
3	[Pinch Valve Symbol]	Pinch valve		Cast Iron	
4	[Motorized Valve Symbol]	Motorized valve		Cast Iron	
5	[Impedance Plate Symbol]	Impedance plate		Cast Iron	
6	[Start Lock Valve Symbol]	Start lock valve		Cast Iron	
7	[2-way Control Valve Symbol]	2-way control valve		Cast Iron	
8	[Pressure Reducer Symbol]	Pressure reducer		Cast Iron	

- Area
 - Equipment
 - =0.D0A.T1K05100
 - =0.D0A.T1P05200
 - =0.D0A.T1P05201
 - =0.D0A.T1P05400
 - =0.D0A.T1R05402
 - =0.D0A.T1W05300
 - Instrument
 - Pipeline
 - Q5001
 - Q001
 - Q002
 - Q003
 - Q004
 - Q005
 - Q006
 - Q007
 - Q008
 - Q009
 - Q010
 - Q011
 - Q013
 - Q014
 - Q016
 - Q018
 - Q021
 - Q023
 - Q024

Active

Tag Information

Number =0.D0A.T1K05100

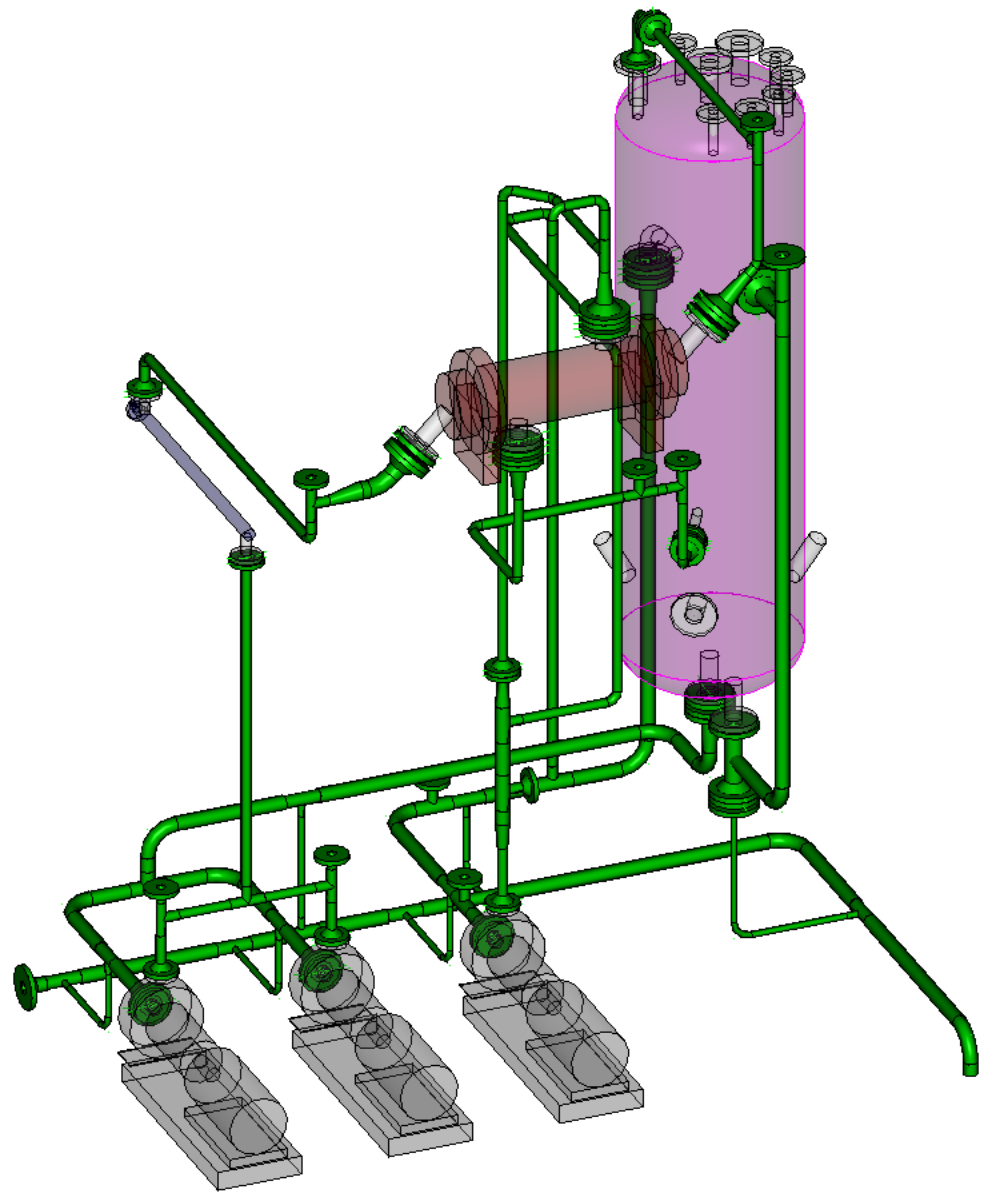
General Info

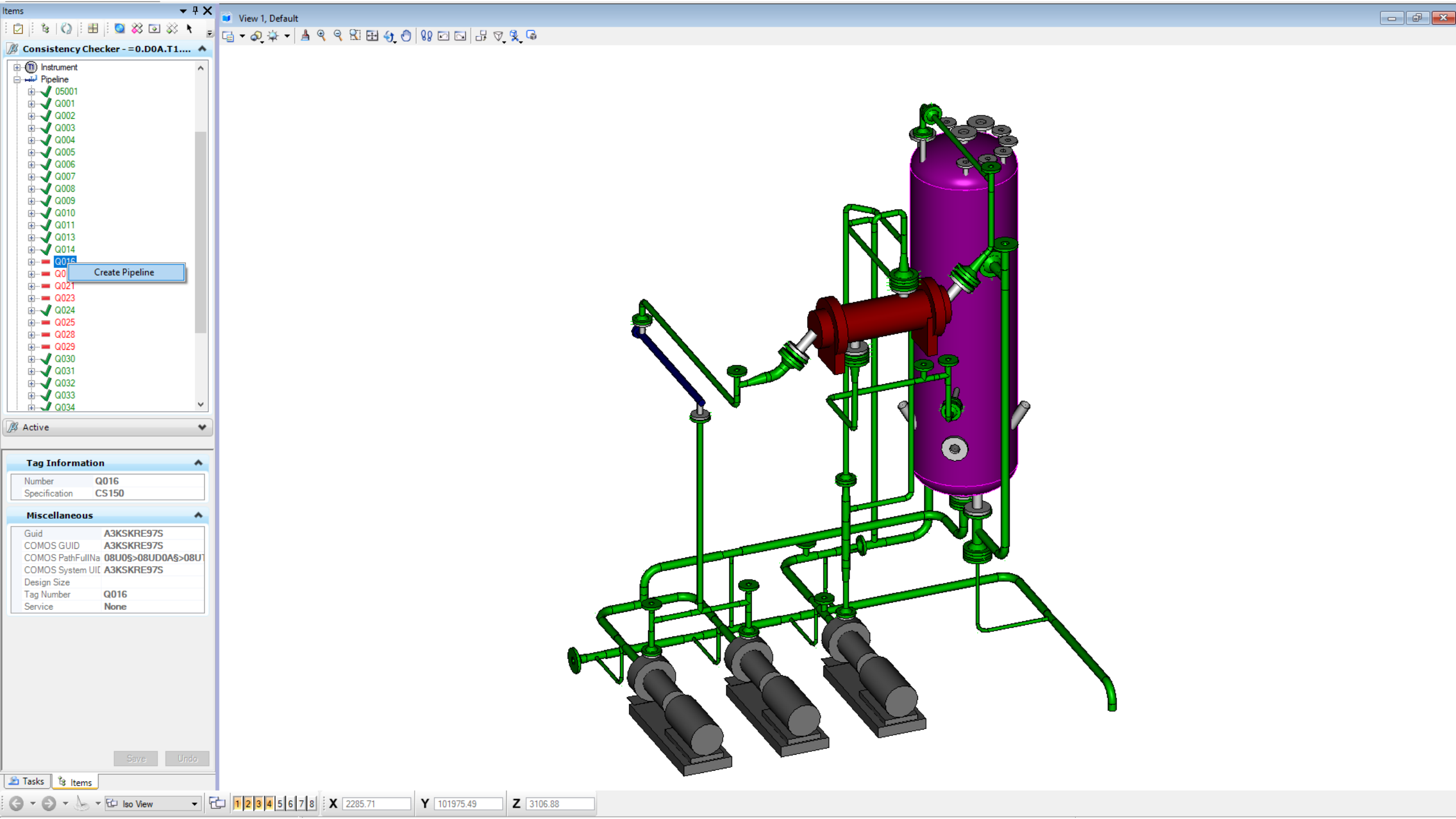
Description Column
Manufacturer QVF DeDietrich Proces

Miscellaneous

Guid A3KR14UTPA
COMOS GUID A3KR14UTPA
COMOS PathFullNa 08U0S>08UD0AS>08U
COMOS System UII A3KR14UTPA
Comment

Save Undo





Consistency Checker - =0.D0A.T1....

- Instrument
 - Pipeline
 - Q001
 - Q002
 - Q003
 - Q004
 - Q005
 - Q006
 - Q007
 - Q008
 - Q009
 - Q010
 - Q011
 - Q013
 - Q014
 - Q016
 - Q021
 - Q023
 - Q024
 - Q025
 - Q028
 - Q029
 - Q030
 - Q031
 - Q032
 - Q033
 - Q034

Create Pipeline

Active

Tag Information

Number	Q016
Specification	CS150

Miscellaneous

Guid	A3KSKRE97S
COMOS GUID	A3KSKRE97S
COMOS PathFullNa	08U0S>08UD0AS>08U
COMOS System UII	A3KSKRE97S
Design Size	
Tag Number	Q016
Service	None

Save Undo

Tasks Items

Interoperability with COMOS

COMOS Electrical – Bentley Raceway and Cable

- Import cable types
- Import cable list and Equipment list
- Associate Equipment IDs with BRCM Equipment
- Place Raceways
- Automatic cables routing
- Cables Management
- Cable schedules and section cuts
- Real cable lengths sent back to COMOS

Clipboard Font Alignment Number Styles Cells Editing

GET THE NEW OFFICE It's one of the perks of having Office 365. See what's new Update Office

B2 Cable type

	A	B	C	D	E	F	G	H	I	J	L	M	N	O	P	Q	R	S	T
2	Cable ID	Cable type	Max. cable length	Unit	Outer Diameter	Unit	Weight	Unit	Cross-Section (mm)	CS (AWG/kcmil)									
3	+0.L001.G001.R001-WD1	LV Cu/PVC/PVC 1x3x95	404.685	m	237.5	mm	0.63555	Kg/m	95	3/0									
4	+0.L001.G001.R001-WD2	LV Cu/PVC/PVC 1x3x120	424.522	m	300	mm	0.8028	Kg/m	120	4/0									
5	+0.L001.G001.R001-WD3	LV Cu/PVC/PVC 1x3x185	386.618	m	462.5	mm	1.23765	Kg/m	185	350									
6	+0.L001.G001.R001-WD4	LV Cu/PVC/PVC 1x3x300	405.443	m	750	mm	2.007	Kg/m	300	500									
7	+0.L001.G001.R001-WD5	LV Cu/PVC/PVC 2x3x185	193.309	m	462.5	mm	1.23765	Kg/m	185	350									
8																			
9																			
10																			
11																			
12																			
13																			
14																			
15																			
16																			
17																			
18																			
19																			
20																			
21																			
22																			
23																			
24																			
25																			

EQUIPMENT_SIEMENS.dgn [3D - V8 DGN] - Bentley Raceway and Cable Management V8i (SELECTseries 2)

File Edit Element Settings Tools Utilities Workspace Window Help

Tasks View 1 - Top, Default View 2 - Isometric, Default

RCMIDMAN ID Manager

Excel

FILE HOME INSERT PAGE LAYOUT FORMULAS DATA REVIEW VIEW ACROBAT Team

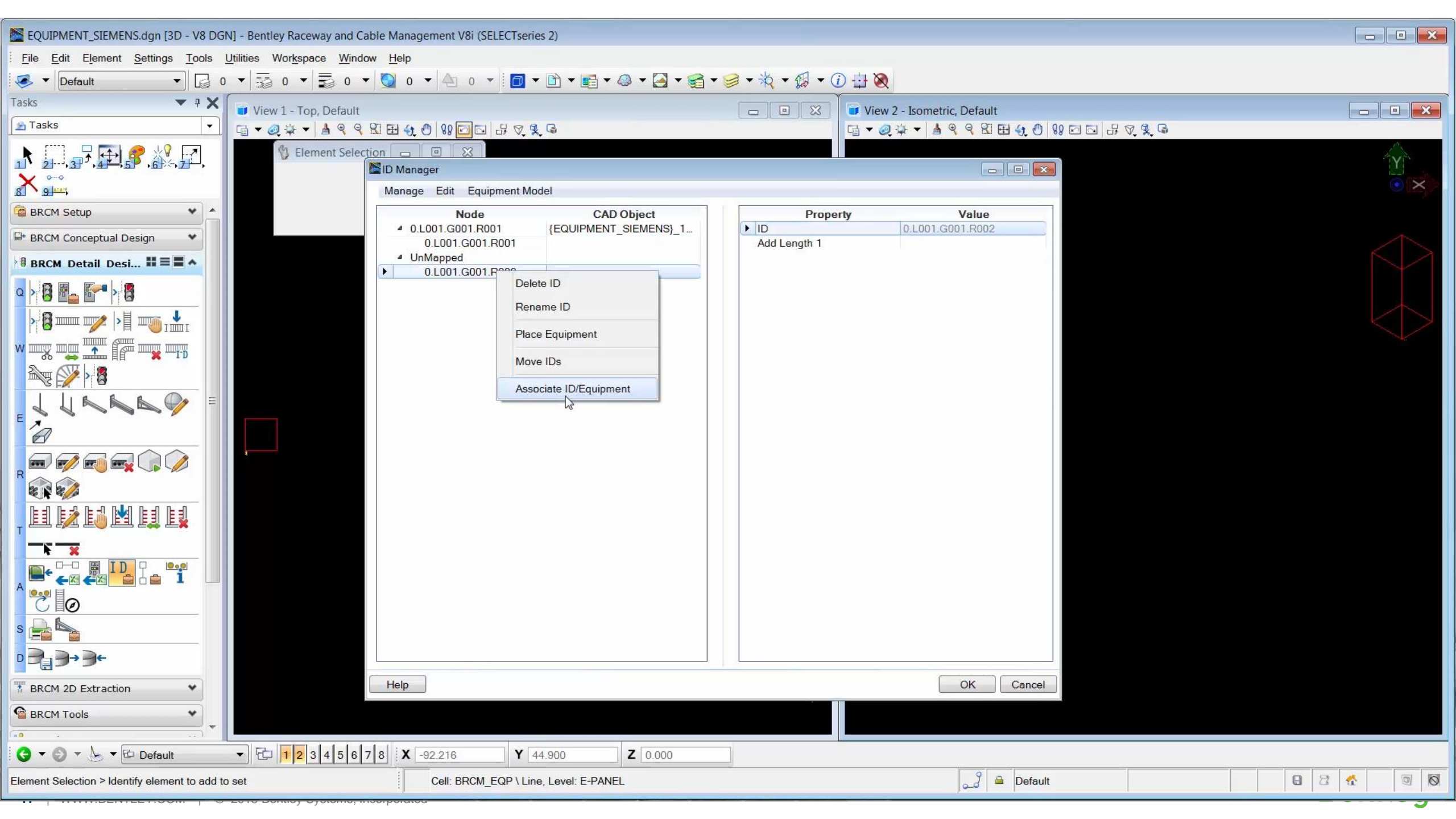
Clipboard Font Alignment Number Styles Cells Editing

GET THE NEW OFFICE It's one of the perks of having Office 365. See what's new Update Office

K5 : X ✓ fx +0.L001.G001.R002

	A	B	C	D	E	F	G	H	I	J	K	L	M	N	P	Q	R	S	T
2	Installation	Location	Cable ID	Cable type	Length	Part number	Used	Installation	From Location	Installation	To Location	System	Load	Cable Lookup					
3		R001	+0.L001.G001.R001-WD1	LV Cu/PVC/PVC 1x3x95	100 m	A3RH87TO4X			+0.L001.G001.R001		+0.L001.G001.R002	LV	80 A	LV-400V-3					
4		R001	+0.L001.G001.R001-WD2	LV Cu/PVC/PVC 1x3x120	100 m	A3RH89J24X			+0.L001.G001.R001		+0.L001.G001.R002	LV	96 A	LV-400V-3					
5		R001	+0.L001.G001.R001-WD3	LV Cu/PVC/PVC 1x3x185	100 m	A3RH89JV4X			+0.L001.G001.R001		+0.L001.G001.R002	LV	160 A	LV-400V-3					
6		R001	+0.L001.G001.R001-WD4	LV Cu/PVC/PVC 1x3x300	100 m	A3RH89MH4X			+0.L001.G001.R001		+0.L001.G001.R002	LV	240 A	LV-400V-3					
7		R001	+0.L001.G001.R001-WD5	LV Cu/PVC/PVC 2x3x185	100 m	A3RH89NX4X			+0.L001.G001.R001		+0.L001.G001.R002	LV	320 A	LV-400V-3					
8																			
9																			
10																			
11																			
12																			
13																			
14																			
15																			
16																			
17																			
18																			
19																			
20																			
21																			
22																			

© 2016 Bentley Systems, Incorporated



RACEWAY_SIEMENS.dgn [3D - V8 DGN] - Bentley Raceway and Cable Management V8i (SELECTseries 2)

File Edit Element Settings

Default

Tasks

Tasks

BRCM Setup

BRCM Conceptual Design

BRCM Detail Desi...

BRCM 2D Extraction

BRCM Tools

Raceway Property Manager

Select Raceway

Properties

Property	Value
Visualization Mode	3D Model + Routing Line
Max Weight	
Dividers	<none>
Voltage Level	LV
Cable Laying Method	Single Layer
Max Capacity	<Default Multi Layer>
Status	Multi Layer
Layer	Single Layer
Redundancy	Single Layer-spacing equals largest cable diame...
	Triangular
	NEC rules for conduit fill- single cable

Help OK Cancel

View 2 - Isometric, Default

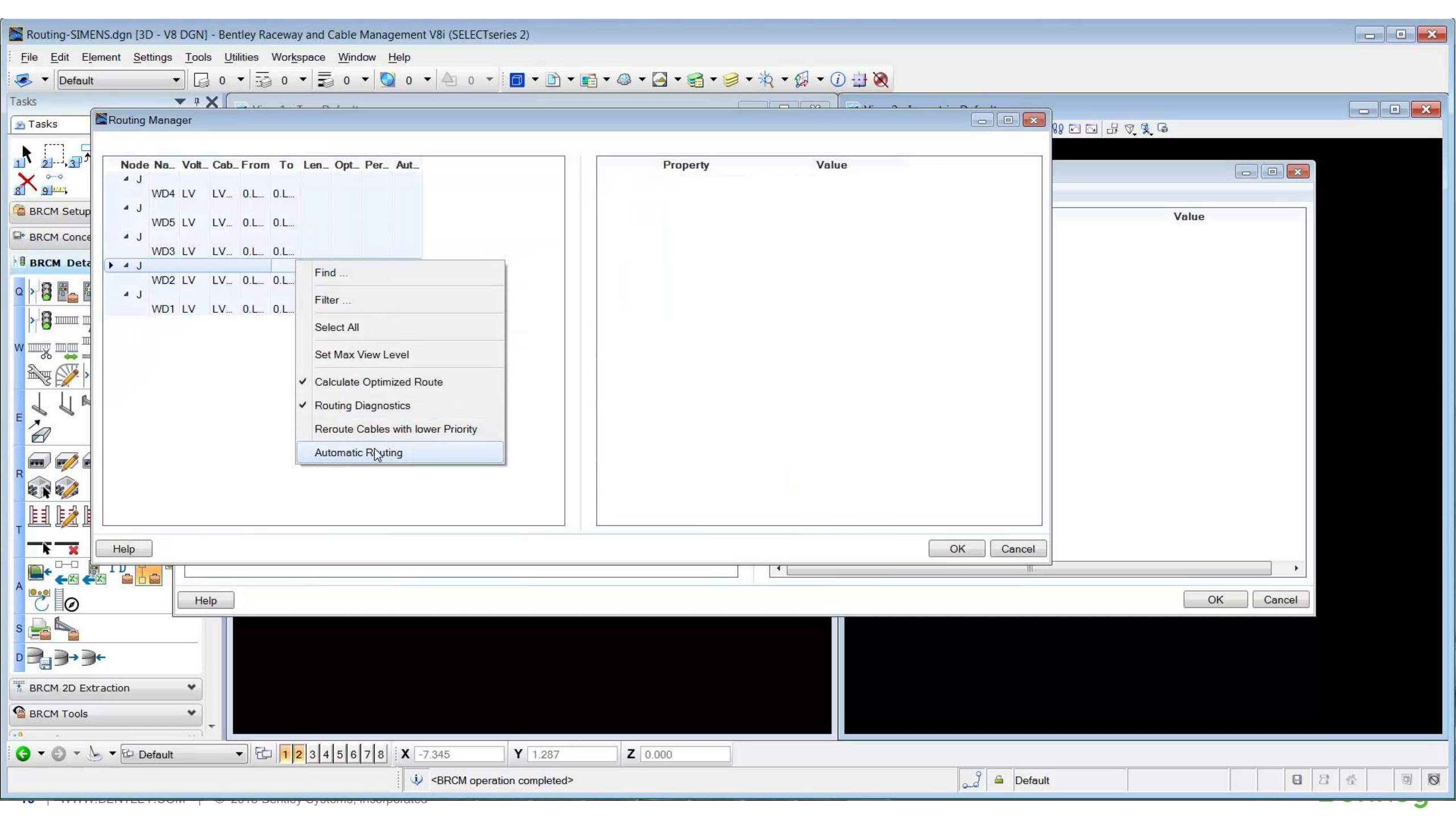
The image shows a 3D isometric view of a raceway system. A main raceway is highlighted in magenta, and several other raceways are shown in blue. Cables are visible within the raceways, and some are connected to red boxes representing equipment or terminations. The view is set to 'Isometric, Default'.

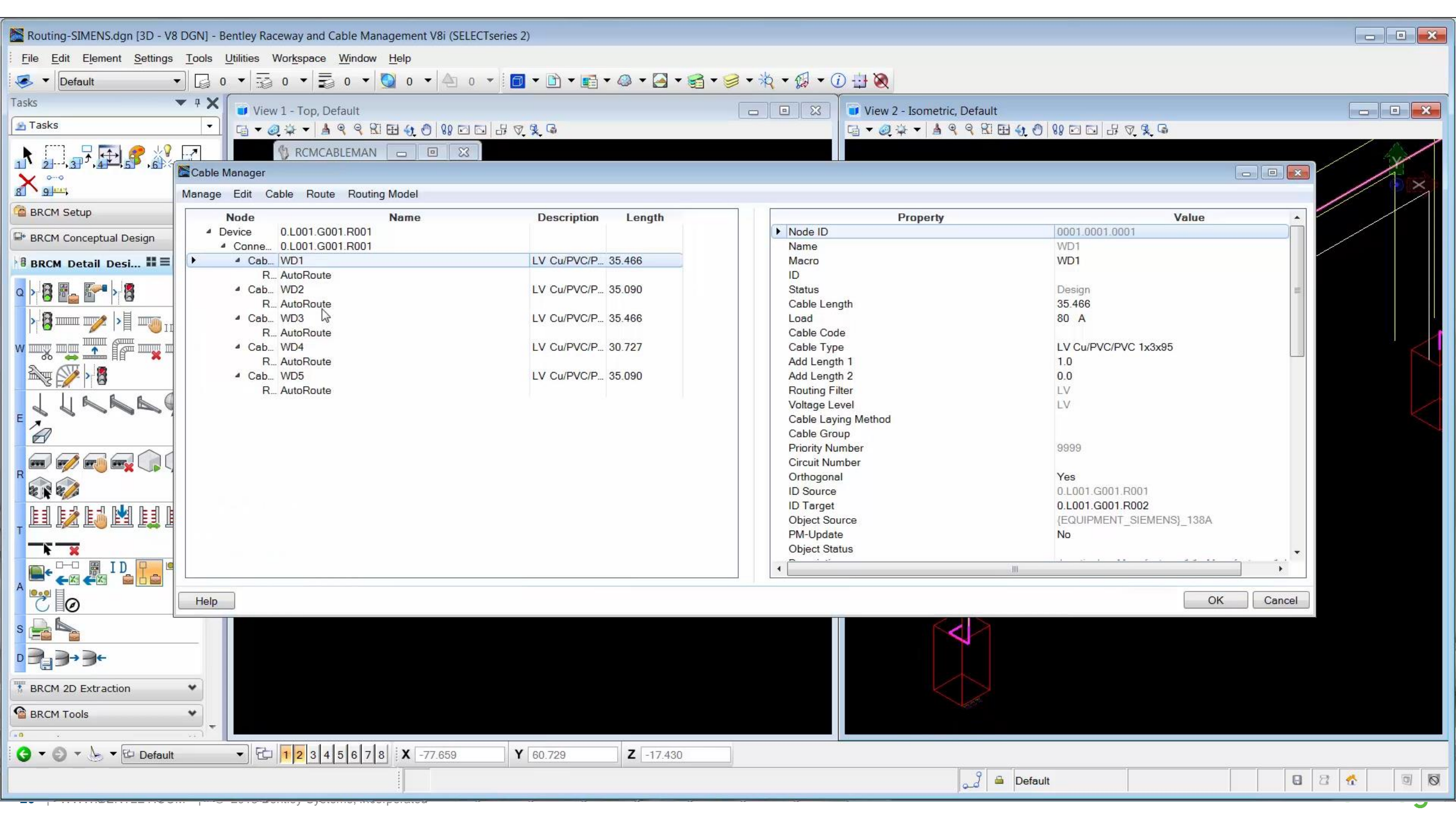
Display complete

Cell: BRCM_RW \ Shape, Level: E-CTRAY-LV

Default

1 2 3 4 5 6 7 8 X -95.740 Y 46.326 Z 7.045





Cable Manager

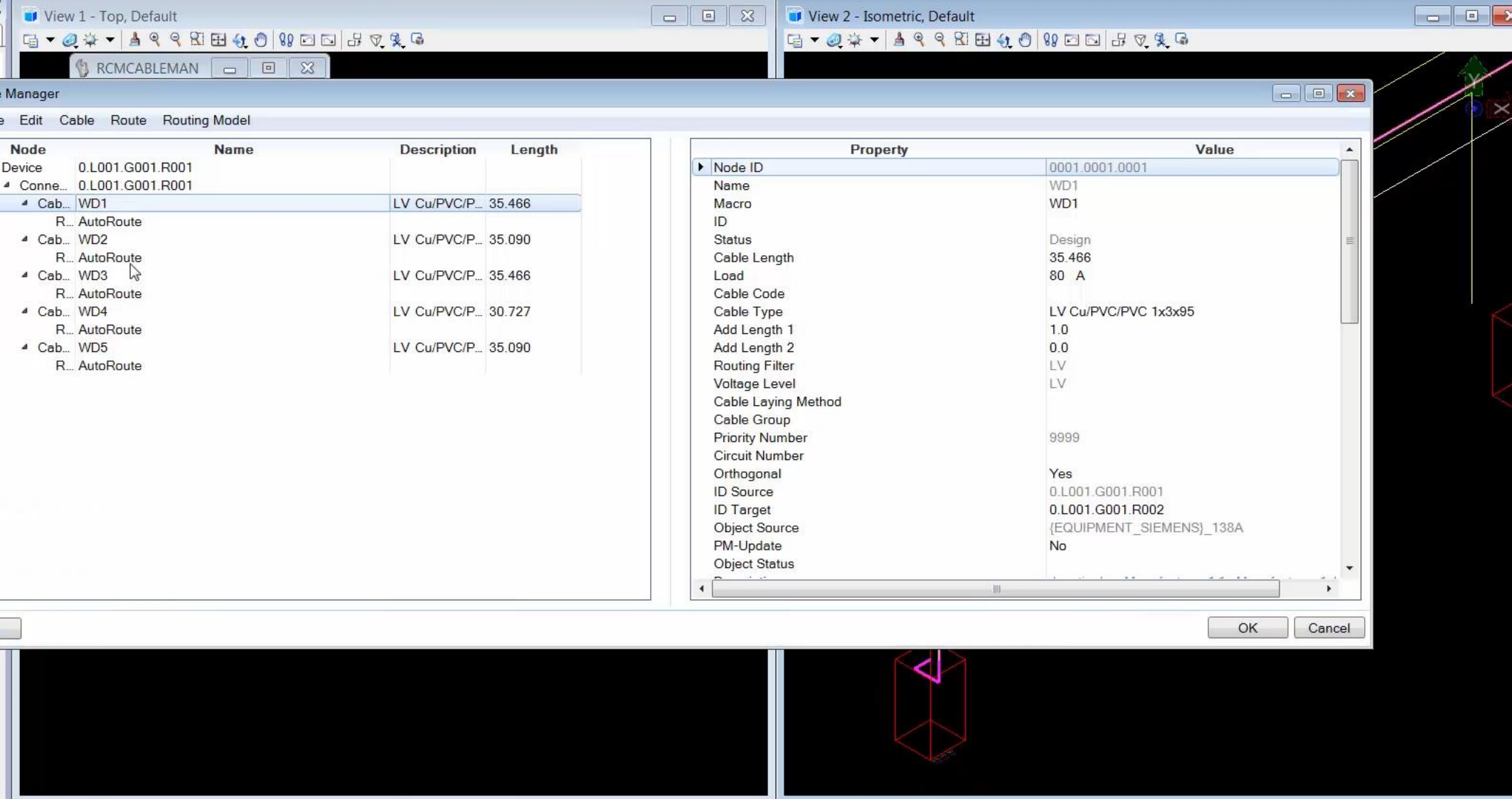
Manage Edit Cable Route Routing Model

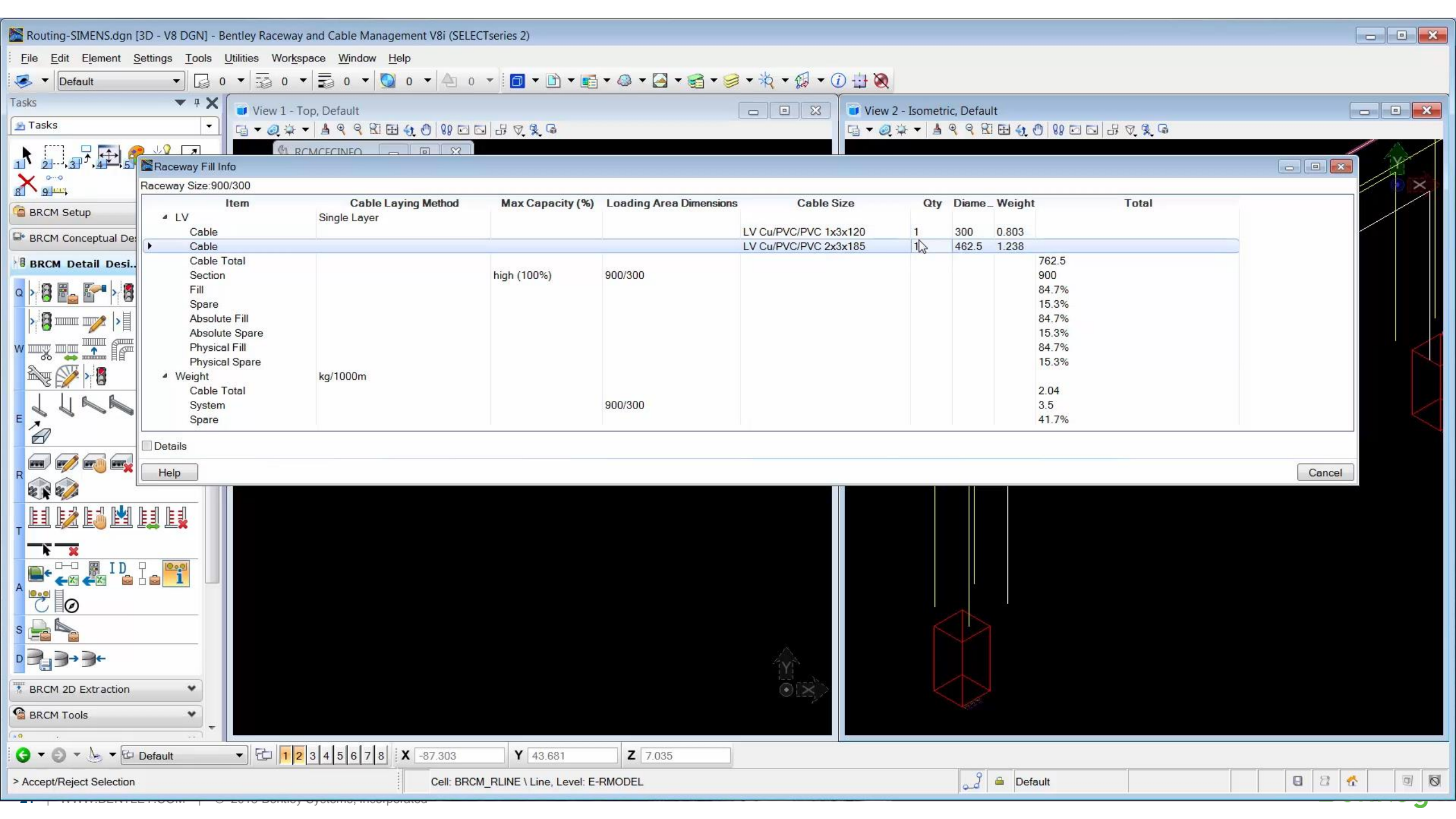
Node	Name	Description	Length
Device	0.L001.G001.R001		
Conne...	0.L001.G001.R001		
Cab...	WD1	LV Cu/PVC/P... 35.466	
R...	AutoRoute		
Cab...	WD2	LV Cu/PVC/P... 35.090	
R...	AutoRoute		
Cab...	WD3	LV Cu/PVC/P... 35.466	
R...	AutoRoute		
Cab...	WD4	LV Cu/PVC/P... 30.727	
R...	AutoRoute		
Cab...	WD5	LV Cu/PVC/P... 35.090	
R...	AutoRoute		

Property	Value
Node ID	0001.0001.0001
Name	WD1
Macro	WD1
ID	
Status	Design
Cable Length	35.466
Load	80 A
Cable Code	
Cable Type	LV Cu/PVC/PVC 1x3x95
Add Length 1	1.0
Add Length 2	0.0
Routing Filter	LV
Voltage Level	LV
Cable Laying Method	
Cable Group	
Priority Number	9999
Circuit Number	
Orthogonal	Yes
ID Source	0.L001.G001.R001
ID Target	0.L001.G001.R002
Object Source	{EQUIPMENT_SIEMENS}_138A
PM-Update	No
Object Status	

Help OK Cancel

- File Edit Element Settings Tools Utilities Workspace Window Help
- Default
- Tasks
- BRCM Setup
- BRCM Conceptual Design
- BRCM Detail Desi...
- BRCM 2D Extraction
- BRCM Tools





Raceway Fill Info

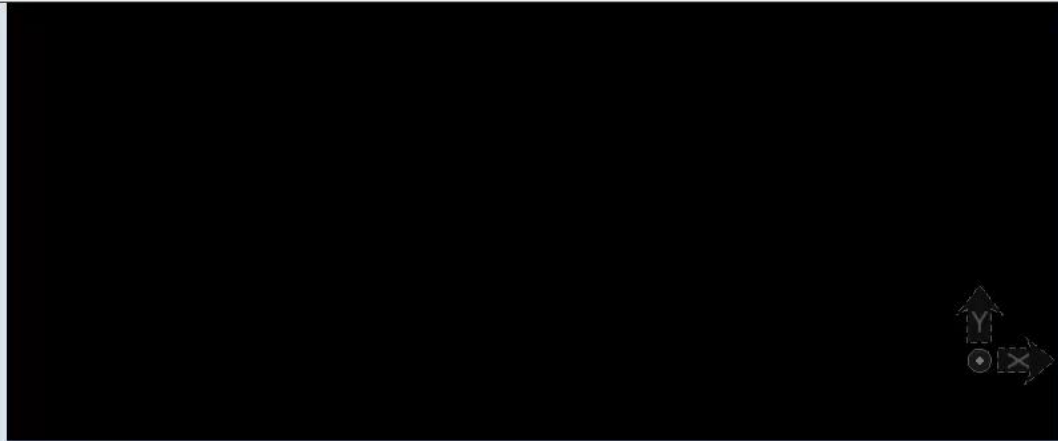
Raceway Size: 900/300

Item	Cable Laying Method	Max Capacity (%)	Loading Area Dimensions	Cable Size	Qty	Diame.	Weight	Total
LV	Single Layer							
Cable				LV Cu/PVC/PVC 1x3x120	1	300	0.803	
Cable				LV Cu/PVC/PVC 2x3x185	1	462.5	1.238	
Cable Total								762.5
Section		high (100%)	900/300					900
Fill								84.7%
Spare								15.3%
Absolute Fill								84.7%
Absolute Spare								15.3%
Physical Fill								84.7%
Physical Spare								15.3%
Weight	kg/1000m							
Cable Total								2.04
System			900/300					3.5
Spare								41.7%

Details

Help

Cancel



Navigation icons: Home, Back, Forward, Rotate, Zoom, Pan, and coordinate fields for X (-87.303), Y (43.681), and Z (7.035).

> Accept/Reject Selection

Cell: BRCM_RLINE \ Line, Level: E-RMODEL

Default and other utility icons.

Section Cut.dgn [3D - V8 DGN] - Bentley Raceway and Cable Management V8i (SELECTseries 2)

File Edit Element Settings Tools Utilities Workspace Window Help

Default

Tasks

View 1 - Top, Default

Element Selection

Section 1

Section 2

Section 2					
RW ID	RW Category	RW fill %	RW Type	Size	Elev
ROO1- 3	LV	85%	CL	W:900mm; H:300mm	7.0m
ROO1- 21	LV	83%	CL	W:900mm; H:600mm	5.6m
ROO1- 10	LV	78%	CL	W:900mm; H:300mm	7.0m
ROO1- 15	LV	0%	CL	W:900mm; H:600mm	5.6m

Section 2							
#	RW ID	RW Category	Cbl #	Cbl Type	Cbl Size	Cbl Wgt	Qty
1	ROO1- 3	LV	WD2	LV Cu/PVC/PVC 1x3x120	300	0.8028	1
			WD6	LV Cu/PVC/PVC 2x3x185	462.5	1.23765	1
2	ROO1- 21	LV	WD4	LV Cu/PVC/PVC 1x3x300	750	2.007	1
3	ROO1- 10	LV	WD3	LV Cu/PVC/PVC 1x3x185	462.5	1.23765	1
			WD1	LV Cu/PVC/PVC 1x3x85	237.5	0.63555	1
4	ROO1- 15	LV	--	--	--	--	--

Q 2D Extraction

W Place Section Plane

E Section Plane Properties

R Create Section

T Update Sections

A Remove 2D Extraction

S Raceway Labels

BRCM Tools

Drawing

Drawing Composition

Solids Modeling

Surface Modeling

Mesh Modeling

Feature Modeling

Visualization

Animation

1 2 3 4 5 6 7 8 X -87.3 Y 44.3 Z 5.3

Element Selection > Identify element to add to set

Locks=AS,GG,SN,NS

Default

Cable Route List (Detailed Design)

20 October, 2016 14:03

Item	Cable No	Cable Type	From ID	Description	Location	To ID	Description	Location	Length	Raceway RW Segment ID	RW Segment Length
1	WD1	LV Cu/PVC/PVC 1x3x95	0.L001.G001.R0 01	Junctionbox Manufacturer 1 1x Manufacturer 1 Junc		0.L001.G001.R0 02	Junctionbox Manufacturer 1 1x Manufacturer 1 Junc		35.500000	Air Gap	1.7
										ROO1-8	6.4
										ROO1-9	0.5
										ROO1-10	17.0
										ROO1-11	1.3
										ROO1-12	6.0
										Air Gap	1.6
2	WD2	LV Cu/PVC/PVC 1x3x120	0.L001.G001.R0 01	Junctionbox Manufacturer 1 1x Manufacturer 1 Junc		0.L001.G001.R0 02	Junctionbox Manufacturer 1 1x Manufacturer 1 Junc		35.100000	Air Gap	1.5
										ROO1-1	6.4
										ROO1-2	0.5
										ROO1-3	17.0
										ROO1-4	1.3
										ROO1-5	6.0
										Air Gap	1.4
3	WD3	LV Cu/PVC/PVC 1x3x185	0.L001.G001.R0 01	Junctionbox Manufacturer 1 1x Manufacturer 1 Junc		0.L001.G001.R0 02	Junctionbox Manufacturer 1 1x Manufacturer 1 Junc		35.500000	Air Gap	1.7