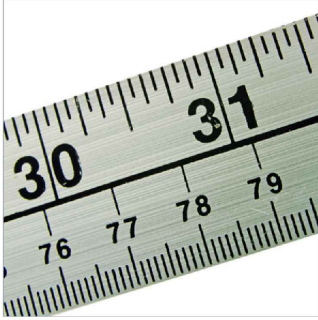


Årsmøde 2018

Bentleyuser.dk



Mobile



BIM



5. til 7. november 2018

HOTEL MUNKEBJERG VEJLE

NORDIC CIVIL



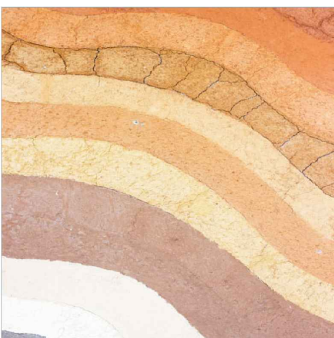
BIM



Mobile



Networking



Connect



Learn



**Velkommen til Vejle - til Årsmøde og til Nordic Civil Conference 2018,
d. 5. til 7. november 2018**

Det er med stor glæde, vi præsenterer dette års program.

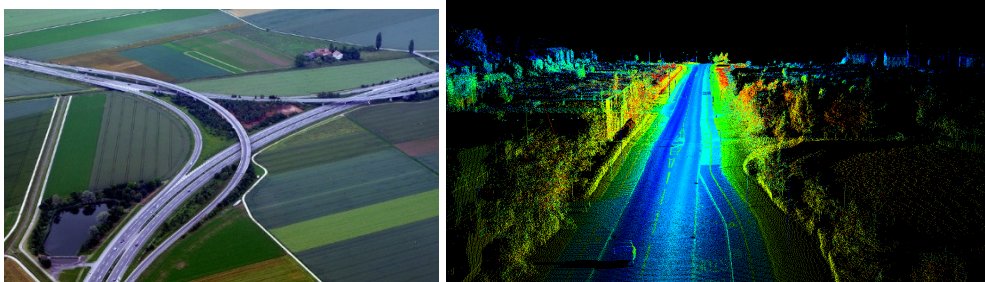
Programmet indeholder i år mere end 80 indlæg og workshops. Vi arbejder alle mere og mere tværfagligt i hverdagen - og denne tværfaglighed afspejler sig derfor også i dette års program. Særligt i Geospatial-sporet er det tydeligt at se, at flere indlæg henvender sig både til Geospatial- og til Civil-brugere. Også MicroStation og Geospatial-sporet begynder at blive tættere knyttet til hinanden med fælles faglige indlæg. Det samme gør sig gældende i Data management sporet hvor flere indlæg er mere en blot Data management.

Vi håber, at I vil tage godt imod denne nye tværfaglige tilgang.

Årsmødet fordeler sig dog stadig på 6 faglige spor, samt 6 workshop-spor, mandag og tirsdag. Onsdag er der mulighed for at deltage i Projectwise workshop, samt i forskellige Civil workshop og Civil-indlæg.

Workshop-sporet mandag-tirsdag byder på mange forskellige emner som Quick start for MicroStation CONNECT, 3D i MicroStation, Creating Custom Line Styles, QuickStart for OpenRoads Designer Geometry, QuickStart for OpenRoads ConceptStation, Corridor Modelling og meget, meget mere.

Udover alt dette er der naturligvis en række produktopdateringer, hvor fokus helt naturligt er lagt på Connect delen. Vi vil helt sikkert komme til at se mange spændende tiltag fra Bentleys side, for at overbevise os brugere om, at skiftet til Connect kan være fornuftigt.



Igen i år sender Bentley en række Bentley-medarbejdere til Årsmødet for at servicere os med deres viden. På Årsmødet vil de berige os med deres faglighed og deres brede erfaring - både gennem deres indlæg, men også ved at vi alle undervejs kan kontakte dem direkte og stille dem spørgsmål.

Årsmødet er også det forum, hvor du kan medbringe dine daglige udfordringer og tage en snak med både SIG-formænd og Bentley ansatte. Specielt vil vi opfordre alle til at deltage i Bentley Café møderne. Herudover er alle Årsmøde-deltagere Bentley-brugere, så der vil blive rig mulighed for at drøfte dine daglige udfordringer med andre brugere. På den måde kan du opbygge et ganske særligt personligt netværk, som du efterfølgende vil kunne anvende i din dagligdag. Netværk er en særdeles vigtig målsætning for hele Årsmødet, hvor vi har en unik stemning i de fantastiske rammer på Hotel Munkebjerg.

I år er der endvidere to keynotes.

Key noten fra Bentley vil omhandle Reality Modeling løsninger. Vi ser flere og flere spændende reality løsninger, men hvor langt er vi egentlig, og hvad kan vi i dag. I denne keynote vil Pascal Martinez fra Bentley præsentere virtual inspektioner og visuel operations af infrastruktur projekter.

Tirsdag morgen har vi bedt Ulla Egebjerg om at holde den indledende Keynote. Emnet supplerer det tværfaglige tema og handler om grænseflader mellem arkitektur og ingeniørkunst inden for design af moderne anlægsprojekter.

Ulla Egebjerg er tidligere chefarkitekt hos Vejdirektoratet og er bl.a. forfatter til bogen "Vejarkitektur og ingeniørkunst " Vi ser frem til en særdeles inspirerende tirsdag morgen.

Foreningens Generalforsamling afholdes i forbindelse med Årsmødet mandag eftermiddag. Formandens beretning præsenteres som tidligere år i forbindelse med konferencens start mandag morgen. Dagsorden og bilag udsendes 3 uger før Generalforsamlingen til medlemsvirksomheders kontaktpersoner og til foreningens personlige medlemmer.

Vi vil gerne opfordre til, at mange deltager i Generalforsamlingen, da det giver et godt indblik i foreningens administrative arbejde. Ifald det kommer til afstemning, er der én stemme pr. medlemsvirksomhed/personligt medlem.

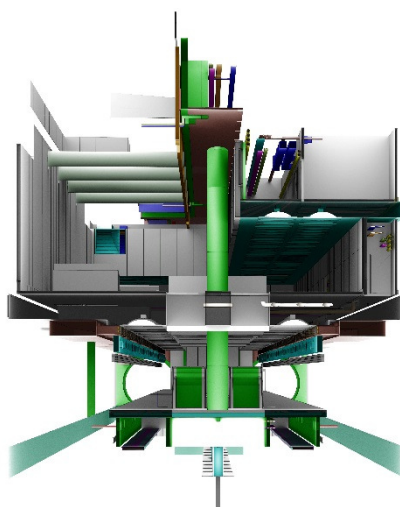
Husk også at holde øje med foreningens hjemmeside www.bentleyuser.dk, hvor der i forbindelse med Årsmødet vil blive uploadet nyheder og evt. ændringer til programmet.

Vi glæder os til at se dig til nogle spændende dage i Vejle!

- og vi håber, at det omfattende program kan inspirere dig til faglig udvikling, til engagement i de spændende tværfaglige indlæg og til at bidrage til gode sociale events.

Mange hilsener

Bestyrelsen og SIG-formænd i bentleyuser.dk



	Skovsal A	Skovsal B+C	Salon 4	Munkebjergsalen
09:00	Registrering og morgenbrød / Registration and breakfast (<i>Munkebjergsalens foyer</i>)			
09:30	Velkomst og formandens beretning ved formand Michael Jepsen (<i>Munkebjergsalen</i>)			
09:50	Bentley keynote - Corporate update			
	<i>Stefan Sigvardsson, Business Solution Director Project Delivery Europe, Bentley</i>			
10:30	A1 - What can Bentley OpenUtilities CONNECT Edition do for me? The Bentley OpenUtilities target the utilities markets with specialized functionality and workflows. This presentation provides an overview of the OpenUtilities CONNECT Edition. Learn how to leverage MicroStation PowerPlatform and Bentley Map capabilities to manage Multi-Utilities assets and get an overview of new solutions and capabilities based on Siemens PSS@SINCAL technologies.	B1 - Bentley New(s) a summary of new features in AECOSim CONNECT Edition Update 4. Plus News from any potential announcements from YII.	C1 - Advance the Speed and Quality of Your BIM Collaboration Learn how ProjectWise helps you connect designers, contractors, clients, and stakeholders to identify issues sooner and increase program assurance. Preview new technologies to advance digital collaboration with web-based BIM review and the ability to understand change.	D1 - MicroStation product news Presentation of the newest MicroStation Connect Edition. With all the features that it may include. - Whats New (from all the updates) - Whats next / Roadmap
11:20	<i>Gijsbert Noordam, Bentley</i>	<i>Brenden Roche, Bentley</i>	<i>Dan Cutler, Bentley</i>	<i>Ronald Zeike, Bentley</i>
11:30	A2 - Why upgrade to Bentley Map CONNECT Edition? With Bentley Map CONNECT Edition, Bentley has renewed its commitment to geospatial technology. In this presentation, you will see the changes, and the new features available in this version compared to the previous generation. Learn how Bentley Map can enhance "Reality Models" in a GIS environment. Finally, get an overview of the features under study and that could find their way in the application in the near future.	B2 - Strategies for Tunnel models using AECOSim Building Designer A Presentation highlighting different methods and approaches top modeling Tunnels	C2 - Hvorfor bruge ProjectWise? "Hvilke fordele er der ved at projektere igennem EDMS, ProjectWise. Fordelene ved at kunne arbejde på tværs af CAD platforme, versions styring, modtagekontrol, kvalitetssikring mm."	D2 - Reality Modelling (Reality Capture) I denne session belyser vi hvordan der kan etableres en fotorealitisk 3D-model af en eksisterende bro og hvordan denne model kan skabe værdi som et centralt og informationsbærende element i forbindelse med indledende undersøgelser, projektering, udførelse samt drift og vedligehold. Herunder vises også hvordan modeller kan anvendes i MicroStation.
12:20	<i>Gijsbert Noordam, Bentley</i>	<i>Brenden Roche, Bentley</i>	<i>Lasse Jensen, Atkins</i>	<i>Thomas Lundsgaard, Niras</i>
12:30	Frokost / Lunch			
13:30	KEYNOTE: Going Digital with Bentley Systems' Reality Modeling Solutions Join Bentley's Pascal Martinez to learn how Bentley's Reality Modeling solutions enable new virtual inspection and visual operations of infrastructure assets through the creation of classified 3D models.			
14:20	<i>Pascal Martinez, Bentley</i>			
14:30	A3 - Reality Modeling for Industrial sites In this presentation, you will learn when and how to combine different reality modeling 3D capturing techniques to create highly-detailed 3D reality meshes on some of the most demanding industrial sites and how to consume those meshes in asset management, inspection and maintenance workflows.	B3 - Visualisering med Microstation og LumenRT Erfaringer fra visualiseringer i projekter. Hvordan klarlægges behovet fra kunden – og hvordan kan opgaven gribes an. Visualiseringseksempler med Microstation og Bentley LumenRT.	C3 - Advance Your Design Worksharing Maturity Is your organization leading or lagging in its use of design worksharing best practices? Learn about a data analytics approach to assess and improve your design worksharing maturity. Learn how leading firms increase margins, improve design quality, and reduce risks.	D3 - What is Bentley iWare? An overview of Bentley iWare. See the list of available iware applications, OS and what they can be used for and what kind of license is needed for the different applications. You will also learn about Connect Advisor, and what's in the pipeline.
15:20	<i>Lucas Gigodot, Bentley</i>	<i>Alison Lin Mose, Atkins</i>	<i>Dan Cutler, Bentley</i>	<i>Ronald Zeike, Bentley</i>
15:30	Pause / Break			
15:45	A4 - Reality Modeling for Transportation Projects Leveraging Reality Modeling allowed users of a large-scale bridge and road construction site to monitor and quantify the construction progress resulting in the discovery of major differences in the areas between the design and the actual construction.	B4 - LectureSession: Introduction to the Curtain Wall Tool. A look at the new features and tools for Placing and editing Curtain Walls	C4 - ProjectWise Databasen - Hvad kan jeg finde? Hvordan kan jeg med SQL statements: - kvalitetssikre mine data? - Sikre korrekt tildeling af rettigheder? - Opnå bedre brugerstyring? - og meget mere For administratorer, nørder og helt almindelige brugere, der bare har interessen.	D4 - MicroStation Tips & tricks Kom med på en tur igennem de måske for nogle ukendte eller glemte tips & tricks fra de ældre MicroStation versioner. Men vi skal da også se på hvad der er sket i de seneste versioner af MicroStation.
16:35	<i>Lucas Gigodot, Bentley</i>	<i>Brenden Roche, Bentley</i>	<i>Kåre Friis-Christensen, Vejdirektoratet</i>	<i>Tine Lai Andersen, NIRAS</i>
16:45	BentleyUser.dk - Generalforsamling 2017 (<i>Skovsal A</i>)			
17:45	Bentley Café (Salon 4) - et uformelt Café-arrangement, hvor du får mulighed for at møde og stille spørgsmål direkte til Bentleys udviklere, og tale med foreningens SIGformænd og ligesindede. - bring your questions to Bentley developers, meet the SIG chairmen and join the informal discussions.			
19:00	Drinks (<i>Munkebjergsalens foyer</i>) efterfølgende Middag / Dinner (<i>Munkebjergsalen</i>)			
19:30	Middag / Dinner (<i>Munkebjergsalen</i>)			

MANDAG









5. NOVEMBER

	Tree-Top 1	Tree-Top 4	Fjordsalen	Mødelokale 4+6	Mødelokale 3+5
09:00 09:30 09:50	BENTLEYUSER		NORDIC CIVIL		MANDAG 5. NOVEMBER
10:30	P1 - Plant Keynote Latest and greatest from Bentley Plant a. OpenPlant b. AutoPlant	W1 - WORKSHOP QuickStart for MicroStation CONNECT Edition for Existing Users The MicroStation CONNECT Edition features updates to many parts of the software. These updates include the introduction of a ribbon-style graphical user interface (GUI), a relocation of the workspace settings, a new Backstage, updated tools and dialogs, Property Driven Annotation, a new Explorer replacing Project Explorer, Annotative Hatching, Display Rules to control graphical display, Drawing and Named Boundaries to help with sheet creation, Sheet Indexing to control parameters of sheets, Attaching Data using Item Types, Reports and Tables, plus more! Learn to master these new and exciting features found in the MicroStation CONNECT Edition.	E1 - Bentley Civil Keynote Join us for a review of what is new with the civil design software including OpenRoads Designer, OpenRail, Geotechnical (gINT), Subsurface Utilities, and MicroStation. <i>Ian Rosam, Bentley</i>		X1 - WORKSHOP QuickStart for OpenRoads Designer Geometry In this workshop, you will be creating a horizontal and vertical alignment using the OpenRoads Designer Geometry tools. You will learn how to create, edit, review and annotate geometric elements. This workshop will also cover working with existing ground terrain and aerial imagery as well as defining 2D/3D Views.
11:20	<i>Jaroslav sitek, Bentley</i>				
11:30	P2 - OpenPlant Connect Edition a. What is new in OpenPlant Connect Edition b. OpenPlant Modeler c. OpenPlant PID d. Connect Advisor e. CONNECTION Center: Learn, Events calendar, Communities, Support		E2 – Whats in the Danish workspace The Danish workspace for OpenRoads Designer contains configuration files, resource files, Civil standards and a large number of dgnlibs containing various settings. Everything is adjusted to use DDA-levels and the Danish road and rail design standards. Join this session to learn what each file type are used for and where you should add your own.	F2 - Understanding BIM for Civil Designers You've heard about it. You've asked about it. A 3-letter acronym that seems to have permeated our industry over the last decade. B-I-M Just Google it, you'll find a mountain of information on BIM. But many of us still wonder, 'What does this mean for me?', or 'Can you show me what you're talking about?' Whether you're a skeptic, a believer, or just confused, join us to discuss BIM from a practical perspective.	
12:20	<i>Jaroslav Sitec, Bentley</i>	<i>Alicia Rodriguez, Bentley</i>	<i>Marianne Rask, Vex</i>	<i>Dan Ahern, Bentley</i>	<i>Rob Nice, Bentley Ian Joyce & Jonathan Smith, Bentley</i>
12:30	Frokost / Lunch				
13:30	KEYNOTE:				
14:20					
14:30	P3 - iModel Hub a. What is it? b. Functionality c. Workflows	W2 - WORKSHOP Producing Deliverables in MicroStation Want to optimize your designs and organize your projects? Capitalize on the powerful capabilities found in MicroStation that will enhance and streamline the process of producing deliverables for your Project, from design composition to sheet composition. Discover how to browse file contents and index DGN files for quick discovery of data and related information using Project Explorer. Learn how to batch print your plan set, be it small or large, utilizing MicroStation's Integrated Print Organizer which can reliably produce consistent, intelligent deliverables for your project	E3 - How to utilise the Danish workspace The Danish dataset for OpenRoads Designer can easily be installed to your C-drive in a single-user-setup. But what do you do when you have a complex server-environment or ProjectWise? Join this session to learn how to adapt the Danish workspace to your company workspace.	F3 - OpenRoads Best Practice - Project Management Join Bentley experts as they share recommendations for organizing OpenRoads project data, files, and references. Federating and organizing project data, files, and references properly can make all the difference in the efficiency of OpenRoads and your design environment.	X3 - WORKSHOP QuickStart Using OpenRoads ConceptStation This workshop is an introduction to the OpenRoads ConceptStation software. In this workshop you will learn how to import data for existing conditions, and how to create conceptual roadway designs that include road corridors and their interactions with intersections, bridges and ramps, including lighting, guardrail and street markings.
15:20	<i>Jaroslav Sitec, Bentley</i>		<i>Marianne Rask, Vex</i>	<i>Dan Ahern, Bentley</i>	
15:30	Pause / Break				
15:45	P4 - PlantWise Connect Edition a. 3D Conceptual Design b. Export to OpenPlant Modeler		E4 - How supplement the Danish workspace The Danish dataset for OpenRoads Designer is based on the delivered workspace from Bentley. Feature Definitions are named according to Bentley but symbology use DDA-levels. But what if you need extra Feature Definitions or another Profile annotation?	F4 - Adding Value to Rail Projects with OpenRail Designer See how OpenRail Designer extends OpenRoads Designer with rail specific tools including turnout and crossing geometry, regression, cant, 3D rail design, and sleeper modeling. We will also look at workflows to model mainline tracks, yards, and tunnels. You will leave understanding why you want to use OpenRail Designer on your next rail project.	
16:35	<i>Magnus Cullberg, Bentley</i>	<i>Alicia Rodriguez, Bentley</i>	<i>Marianne Rask, Vex</i>	<i>Ian Rosam, Bentley</i>	<i>Ian Joyce, Bentley Rob Nice & Jonathan Smith, Bentley</i>
16:45					
17:45 19:00	Civil Café - Bring your questions to this session and receive answers (<i>Fjordsalen</i>)				
19:00	Drinks (<i>Munkebjergsalens foyer</i>)				
19:30	Middag / Dinner (<i>Munkebjergsalen</i>)				

	Skovsal A	Skovsal B+C	Salon 4	Munkebjergsalen
09:00	KEYNOTE: Arkitektur og ingeniørkunst – om design af moderne anlægsprojekter Ulla Egebjerg, tidligere chefaritekt hos Vejdirektoratet og bl.a. forfatter til bogen "Vejaritektur og ingeniørkunst – en bog om design af moderne motorveje", vil i dette indlæg have fokus på samspillet mellem arkitektur og ingeniørvidenskab, når der skal anlægges motorveje og store anlægsprojekter så som Fjordforbindelse ved Frederikssund, Silkeborg motorvejen osv. Arkitektur er det faglige felt, der kan skabe helhed i de store anlægsprojekters æstetiske og funktionelle kvaliteter. Tilgangen kan binde planlægnings- og miljøarbejdet, de historiske og visuelle kvaliteter, trafikikkerhed og anlægsteknik sammen. Indlægsholder: Ulla Egebjerg, freelance			
10:20	Pause / Break			
10:30	A5 - Understanding Georeferenced Coordinate Systems and Point Cloud Tools Come explore Georeferenced Coordinate Systems and the LiDAR tools under the reality modeling tab in OpenRoads Designer. We will take a look into what a Georeferenced Coordinate System is and why setting the correct one is critical for your project's success. We will also explore the tools available for processing Point Cloud data and build a terrain model from LiDAR data <i>Ian Joyce , Bentley</i>	B5 - How to create a parametric object How to create a parametric object using constrained objects in AECOSim Building Designer <i>Brenden Roche, Bentley</i>	C5 - An introduction to Synchro The 4D Scheduling and Project Management software. See how projects are planned, built and managed inside Synchro; which links the 3D BIM deliverables with the activities on the project schedule to create the 4D time dimension. Bentley Systems acquired the leading 4D market solution Synchro in June 2018. (Et indlæg der er tværfagligt) <i>Maria Protasova, Bentley</i>	D5 - ProjectWise tips and tricks for MicroStation brugere Tips og tricks til hvorfor ProjectWise er kan hjælpe en MicroStation bruger i hverdagen. Og herunder også tips til nogle af de mange kommandoer som findes i ProjectWise. <i>Thomas Bogø Nissen, Rambøll</i>
11:30	A6 - Tror du Jorden er flad ! En let og (sørg)munter gennemgang af koordinatsystemer og projektioner, samt de genvordigheder og hovedbrud som anvendelse af de 14 danske officielle koordinatsystemer kan give. <i>Erik Wirrng, LE34</i>	B6 - How to Generate a Pile Report with coordinate information How to Generate a Pile Report with coordinate information <i>Brenden Roche, Bentley</i>	C6 - Powershell for ProjectWise - How does it work? The number of ProjectWise PowerShell commands is constantly growing. Through ProjectWise for PowerShell it is possible to run commands in ProjectWise. How does PowerShell work, and how can I benefit from the fast growing ProjectWise commands. First of all, how is PowerShell for ProjectWise activated. We will look at some simple commands and show some more active scripting. <i>Christian Jacobsen, COWI</i>	D6 - Civil AccuDraw, MicroStation AccuDraw, or Both? Mastering a tool such as AccuDraw allows you to produce precision drawings faster and more accurate than many other methods. Civil AccuDraw, builds upon the solid foundation of AccuDraw combining it with civil specific tools enabling it be more useful to the civil designer than standard AccuDraw alone. Become more productive knowing where and when AccuDraw and Civil AccuDraw are used. <i>Ronald Zeike, Bentley</i>
12:20				
12:30	Frokost / Lunch			
13:30	A7 - Get any spatial data directly into MicroStation FDO Reader for MicroStation is an application for reading 2D and 3D spatial data from a variety of spatial data sources directly from MicroStation. Easy to load geometries and attributes from databases, ODBC data sources, text files, shapefiles, and many other sources from plain MicroStation. No configuration is needed. <i>Krister Surell</i>	B7 - Virtual Reality i dagligdagen Se hvordan VR kan bruges sammen med Bentley Navigator og til andre ting end du måske lige havde forestillet dig. <i>Mikkel Bennedbæk, Atkins</i>	C7 - Under the Hood of ProjectWise Office 365 Integration The new integration between ProjectWise and Office 365 will transform how your projects collaborate. Prepare yourself to guide and facilitate successful adoption by learning how to configure and use specific integrations with Microsoft Flow, SharePoint, and Teams. <i>Dan Cutler, Bentley</i>	D7 -Design, Drawing and Sheet Composition This session is built with the CAD Manager in mind. A step through the various tools, technologies and concepts that generate drawings and sheets in MicroStation. Begin with an overview of the Dynamic Views workflow, and with it a close look at the various components that are used and required. Detailing Symbol Styles are discussed, in an overview, and in depth. <i>Ronald Zeike, Bentley</i>
14:20				
14:30	Pause / Break			
14:45	A8 - Employing your 3D Models into Visualization Applications See how your 3D mesh of existing condition be transformed into your design. Quickly create images, videos and real-time presentations of Architecture, Landscape, Urban and Infrastructure Designs. With LumenRT, you will 'Tell a Better Story'. Win business through more engaging user experiences while still working in Your Design System. Nothing to learn! Quickly bring your scenes to life using tools you know. <i>Lucas Gigodot, Bentley</i>	B8 - An introduction to Synchro The 4D Scheduling and Project Management software. See how projects are planned, built and managed inside Synchro; which links the 3D BIM deliverables with the activities on the project schedule to create the 4D time dimension. Bentley Systems acquired the leading 4D market solution Synchro in June 2018. (Et indlæg der er tværfagligt) <i>Maria Protasova, Bentley</i>	C8 - Configuring Your Project for Success Increase the value you deliver to your projects by understanding the power of a fully configured ProjectWise Work Area. Learn how resource definitions, permissions, workflows, standards, and more promote increased collaboration, efficiency, and consistency. <i>Martin Engelbrecht, Bentley</i>	D8 - Tematisering af FOT data i MicroStation Connect Edition En demonstration af hvordan man kan implementere rule based tematisering af grundkort ved brug af MicroStation, samt hvordan man får konvereret FOT data til DDA lag. Der vises en løsning for MicroStation SELECTseries, samt hvordan vha. MicroStation CONNECTEdition kan få endnu flere informationer tilnyttet sine modeller. Der vises desuden hvordan disse informationer kan anvendes til at placere tekster mv. ud fra deres attributter. <i>Tine Lai Andersen, NIRAS</i>
15:35				
15:45	Afslutning af Årsmøde (Iodtrækning) - Nordic Civil will continue after the break			
16:10	A9 - GeoSpatial SIG meeting Geospatial og Microstation har meget til fælles. Hvordan skal det fremtidige SIG-arbejde for disse produktlinjer tegnes? Dette vil være det primære diskussionsemne for indeværende møde.			
17:00				
17:10				
18:00				
19:30	<i>Anders Sorgenfri Askholm, LE34</i>			
19:30	Middag (Fjordsalen)			

TIRSDAG

6. NOVEMBER

	Tree-Top 1	Tree-Top 4	Fjordsalen	Mødelokale 4+6	Mødelokale 3+5
09:00	BENTLEYUSER		NORDIC CIVIL		TIRSDAG
10:20			KEYNOTE: Arkitektur og ingeniørkunst – om design af moderne anlægsprojekter Indlægsholder: Ulla Egebjerg		6. NOVEMBER
10:30	P5 - Interoperability with other 3D Plant Systems a. Utilizing PDMS/E3D and Smart 3D models with Bentley OpenPlant b. OpenPlant in BIM projects c. Re-using components from Mechanical CAD <i>Magnus Cullberg, Bentley</i>	W3 - WORKSHOP Getting started with 3D in MicroStation Learning 3 Dimensional drawing with MicroStation Connect Edition is an extension of your knowledge of 2 Dimensional drawing. If you can draw in 2 Dimensions (2D), then all that is needed is to learn how to manipulate the AccuDraw compass in 3 Dimensional (3D) space.	E5 - Erfaring med projektering af BDKs FTN-passiv FTN står for "Fixed Transmission Network", som er driftskritiske kabler i forbindelse med indføring af det nye signalprogram (SP). Dette indlæg highlighter udfordringerne ved projektering af FTN og hvordan NIRAS har benyttet Bentley RailTrack/SUE til at udforme kabel-tracé og brønde i 3D. <i>Li Peng, Niras</i>	F5 - Computing Earthwork Volumes with OpenRoads Designer OpenRoads Designer's (BIM) model calculates volumes in a format to meet your project requirements. You can use end area volumes or compute full prismoid volumes from the 3d model You can even "slice" or segregated volumes for staged construction, different areas of the project, or for each drawing. <i>Ian Rosam, Bentley</i>	X5 - WORKSHOP Creating and Manipulating the Corridor In this course, you will create a roadway corridor and then explore the many tools and techniques to edit and manipulate the corridor. We will take a look at how to add multiple templates drops along the corridor as you encounter intersections, driveways and turn lanes and how to edit and copy template drops in lieu of creating a new template. We will show how to make the corridor follow edge of pavement geometry using point controls and corridor references. You will also learn how to use additional corridor modification tools such as Secondary Alignments, Parametric Constraints, Clipping Reference, Target Aliasing, and End Condition Exceptions. <i>Rob Nice, Bentley Dan Ahern & Jonathan Smith, Bentley</i>
11:20	P6 - COMOS Interoperability a. PlantWise b. OpenPlant c. Bentley Raceway and Cable Management <i>Jaroslav Sitec, Bentley</i>	W4 - WORKSHOP Hvordan laves en digital transformation af anlægsbranchen i Danmark? Vejdirektoratet og Banedanmark har udarbejdet en 5 årig plan. Strategien er bygherredreven, men branchen har rig mulighed for at bidrage og påvirke arbejdet. Få et indblik i hvilke tanker og planer der ligger bag strategien. <i>Alicia Rodriguez, Bentley</i>	E6 - BIM Infra.dk Hvordan laves en digital transformation af anlægsbranchen i Danmark? Vejdirektoratet og Banedanmark har udarbejdet en 5 årig plan. Strategien er bygherredreven, men branchen har rig mulighed for at bidrage og påvirke arbejdet. Få et indblik i hvilke tanker og planer der ligger bag strategien. <i>Rasmus Fuglsang, Vejdirektoratet Gita Monshizadeh, Banedanmark</i>	F6 - OpenRoads Best Practice - Terrain Modeling Tips and tricks for working with terrain models including the best way to create a single terrain from multiple corridors and linear templates, how to create and use graphical filters to create a single composite terrain, how to export the terrain to other formats, and more. <i>Ian Rosam, Bentley</i>	
12:20					
12:30	Frokost / Lunch				
13:30	P7 - OpenPlant Isometrics Manager a. Drawing template configuration b. BOM configuration c. User Labels d. Detail Sketches configuration <i>Magnus Cullberg, Bentley</i>	W4 - WORKSHOP Creating Custom Line Styles In this course, you will learn to create Element Templates. Element Templates are used to enforce standards and make it easy for users to set the correct attributes for a given element type.	E7 - I Just Need to Know... Introducing the OpenRoads Analysis Tools OpenRoads Designer includes various tools to review and analyze a model. Join us as we discuss a very useful set of tools to analyze terrain, geometry, water flow, ponding water, site visibility, aquaplaning, and more. <i>Ian Joyce, Bentley</i>	F7 - Why you Should be Using Subsurface Utilities Can OpenRoads Subsurface Utilities design drainage systems like I currently do? Yes it can. Does Subsurface Utilities provide me additional capabilities and benefits? Yes it does. How do I ensure success when implementing Subsurface Utilities? Join us to answer these and other questions. <i>Jonathan Smith, Bentley</i>	X7 - WORKSHOP Corridor Modeling Quantities In this workshop, you will learn various tools and methods to extract and compute quantities from the corridor model. You will learn how to assign unit costs and generate an estimated cost report for your project using the Component Quantities and Element Component Quantities tool. We will take a look at how to generate cut and fill volume reports from single corridor models as well as multiple corridor models and you will also learn how Named Boundaries and the Quantities Report by Named Boundary can be used to segregate quantities in the corridor model. <i>Dan Ahern, Ian Rosam, Bentley</i>
14:20					
14:30	Pause / Break				
14:45	P8 - User presentation		E8 - Creating and Managing Plan, Profile, and Cross Section Drawings OpenRoads Designer brings a new level of automation to the drawing production process including live updates to profiles and cross sections taken directly from the 3D model. No longer will your sheets be out of sync with the design model. <i>Rob Nice, Bentley</i>	F8 - Following the Rain: Time Based Simulation of Runoff and Ponding Learn to model a storm event where rainfall intensity varies with time and evaluate how catchment areas and the conveyance system respond. We'll finish by looking at using a pond to attenuate runoff rates. <i>Jonathan Smith, Bentley</i>	
15:35		<i>Alicia Rodriguez, Bentley</i>			
15:45	Afslutning af Årsmøde (Iodtrækning) - Nordic Civil will continue after the break				
16:10	SIG Farver  MicroStation  BIM  Data Management  Plant  GEOspatial and Vizualiation  Civil  Civil Workshops  Tværfaglig		E9 - Introducing Bentley Navigator 10.2 Bentley Navigator and OpenRoads Navigator have been combined and enhanced to become Bentley Navigator 10.2. Join us to explore the capabilities of this powerful new application as well as how it can be used to facilitate a paperless plans workflow. <i>Dan Ahern, Bentley</i>	X9 - WORKSHOP Site Modeling and Non-Corridor Modeling (OpenRoads Designer) Learn how to model civil elements that are typically found outside the limits of a roadway corridor (i.e. civil sites, building pads, parking lots, ponds, infield grading, bridge abutment grading, etc.) You will learn how to create 3D elements and Proposed Terrains using fundamental site modeling and non-corridor modeling techniques. We will utilize the vertical geometry tools along with linear templates and the terrain modeling tools throughout this course. <i>Ian Joyce, Bentley Rob Nice & Jonathan Smith, Bentley</i>	
17:00					
17:10			E10 - Updating the Design - What Happens When Things Change? This session will focus on what happens to OpenRoads data as changes are made throughout the design process. We will start with a completed preliminary design model and then discuss what happens when changes are made to terrain, geometry, templates and corridors. This session will give you a better understanding of how things update based on the rules and relationships that are part of OpenRoads technology. <i>Ian Rosam, Bentley</i>		
18:00					
19:30	Midtag (Salon 2+3)				

	Tree-Top 1	Tree-Top 4	Mødelokale 4+6	Mødelokale 3+5
	BENTLEYUSER WORKSHOP DAY		NORDIC CIVIL	
	ONSDAG 7. NOVEMBER			
09:00		W11 - WORKSHOP Setting up a full ProjectWise server installation from a-z Installing and setting up server software for: - Integration server - I-model composition server for PDF - Imodel Composition server for i-Model	F11 - OpenRoads Best Practice - Making the Model More Visual Learn how to increase the visual impact of your models with minimal effort. Create models using realistic materials, pavement markings, guardrail, barriers, fences, traffic control and more. The techniques described in this session all use functionality built into the OpenRoads Designer workspace. <i>Rob Nice, Bentley</i>	X11 - WORKSHOP Evaluating and Laying Out a Storm Network We will start by using Review and Evaluation tools to explore a utilities-rich file. You will master being able to describe the engineering of any utilities file. Then we will lay out inlets, pipes and catchments to model a storm network.
09:50				
10:00			F12 - Managing Civil Geometry from Simple to Complex OpenRoads geometry is very powerful but can get complex. However, once you understand all of the tools and relationships you will be on your way to being a geometry master. In this session we explore tools and techniques that make editing and managing even complex geometry easy. We will explore tools such as Copy, Append, Table Editing, Simplify, Complex Redefine, and more.	
10:50		<i>Dan Cutler and Martin Engelbrecht, Bentley</i>	<i>Ian Rosam, Bentley</i>	<i>Jonathan Smith, Bentley</i> <i>Ian Joyce & Dan Ahern, Bentley</i>
11:00	Pause / Break		Pause / Break	
11:10		W11 - WORKSHOP Setting up a full ProjectWise server installation from a-z (Continued) Installing and setting up server software for: - Integration server - I-model composition server for PDF - Imodel Composition server for i-Model	F13 - Conveying Asset Management with OpenRoads Designer Items Types are a powerful feature to add attribution to your OpenRoads Designer models. Once defined these attributes can be used for reporting or as part of an asset management system. During this session you will learn to assign and use Item Types individually and in bulk using the new Asset Management tool, review data, generate reports, and save the data for an asset management system. <i>Dan Ahern, Bentley</i>	X13 - WORKSHOP Hydraulic Analysis and Design in OpenRoads Designer This course teaches the basic skills to analyze and design hydraulic networks in OpenRoads Designer. Begin by learning to use the Scenario Manager to review existing Scenarios before learning how to calculate your own Analysis Scenarios and Designs. You will also learn to compare scenarios to find differences between them and how pipe sizing works.
12:00				
12:10			F14 - The value of reality modeling This presentation covers how a design engineer can quickly create a reality model to use during the design process. From snapping a few photos in the field with a cell phone to a 3D model you can use in the design in a few easy steps using ContextCapture.	OpenRoads Designer
13:00		<i>Dan Cutler and Martin Engelbrecht, Bentley</i>	<i>Ian Rosam, Bentley</i>	<i>Jonathan Smith, Bentley</i> <i>Ian Joyce & Rob Nice, Bentley</i>
13:00	Frokost / Lunch		Frokost / Lunch	
14:00		W11 - WORKSHOP Setting up a full ProjectWise server installation from a-z (continued) Installing and setting up server software for: - Integration server - I-model composition server for PDF - Imodel Composition server for i-Model	F15 - Modeling Techniques - Ramps and Gores Join Bentley experts to learn recommended techniques to model ramps and gores as part of your mainline roadway corridors. <i>Ian Joyce, Bentley</i>	X15 - WORKSHOP QuickStart for OpenRail Designer In this course you will learn how to perform horizontal geometry regression, define turnouts, define geometry for a siding, and model the rail corridor including the siding and a tunnel section. OpenRail Designer
14:50				
15:00			F16 - Modeling Techniques - Roundabouts Join Bentley experts as they share techniques to model roundabouts in OpenRoads Designer.	
15:50		<i>Dan Cutler and Martin Engelbrecht, Bentley</i>	<i>Ian Rosam, Bentley</i>	<i>Rob Nice, Bentley</i> <i>Dan Ahern & Jonathan Smith, Bentley</i>

UDSTILLING I FOYEROMRÅDET UD FOR MUNKEBJERGSALEN:

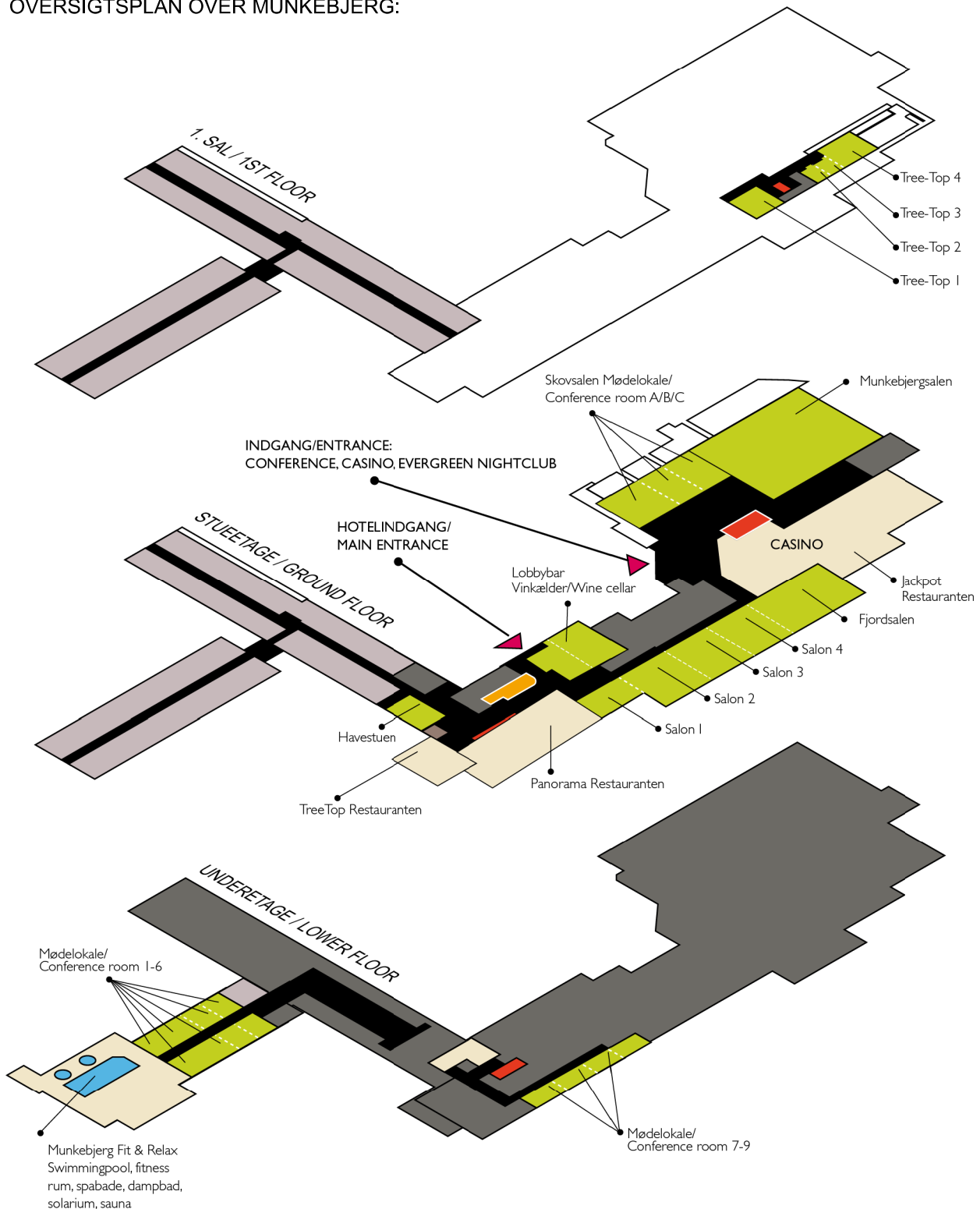


LE34 er Bentley Channel Partner og tilbyder konsulentydelse og tilbyder et omfattende kursus udbud i Bentley programmer med undervisningssteder i Ballerup, & Aarhus. LE34 udvikler ligeledes produkter til mange forskellige platforme, og udlåner MicroStation personale hvis du mangler personale i spidsbelastninger.



LIFA A/S Landinspektører tilbyder et alsidigt mix af kompetencer og rådgivning inden for CAD-, GIS og OIS-ydelse. Som Bentley Gold Channel Partner og Bentley Institute Training Partner leverer vi unikke Bentley-kurser og -konsulentydelse skræddersyet kundens behov. LIFA har igennem mange år udviklet Danmarks største portefølje af applikationer til Bentleyplatformen.

OVERSIGTSPLAN OVER MUNKEBJERG:



INDLÆGSHOLDERE OG DELTAGERE FRA BENTLEY:



Brenden Roche
Senior Application Engineer
BIM



Jonathan Smith
Senior Application Engineer
Civil



Alizia Rodriguez
Bentley institute



Jerard Marsh
Senior Application Engineer
Reality Modeling



Dan Ahern
Content Development Manager
Civil



Karsten Pudziow
Senior Application Engineer
MicroStation/BIM



Dan Cutler
Application Engineer
ProjectWise



Gijsbert Noordam
Product Manager
Geospatial



Ian Joyce
Senior Application Engineer
Civil



Magnus Cullberg
Senior Application Engineer
Plant



Ian Rosam
Director, Product Manager
Civil



Robert Nice
Senior Application Engineer
Civil



Jaroslaw Sitek
Manager Application Engineering
Plant



Ronald Zeike
Consultant
MicroStation



Maria Protasova



Stefan Sigvardsson
Business Solution Director
Project Delivery Europe

bentleyuser.dk

bentleyuser.dk er en uafhængig brugerforening, hvis medlemmer benytter Bentleys programmer i deres professionelle virke. Foreningens formål er at formidle viden, kontakt og informationer til og mellem medlemmerne.

Det gøres dels gennem dannelse af interessegrupper - SIG'er - inden for forskellige emner, dels ved at understøtte medlemmernes ønsker og krav til Bentleys produkter.

En bestyrelse på 5 medlemmer varetager den daglige ledelse af foreningens virke og økonomi, mens SIG-formændene varetager den faglige udveksling bl.a. gennem SIG-møder, web-formidling og arrangementer som dette Årsmøde.



Formand:

Michael Jepsen
Sweco

Tegner foreningen, har kontakt til leverandører og relevante foreninger, sikrer afholdelse af generalforsamlinger og står for foreningens rejsearrangementer.



Næstformand:

Jan Thinglev Olsen
LE34

Formandens stedfortræder, står for Årsmødekoordinering, koordinering af SIG-arbejdet, samt af øvrige foreningsmøder.



Sekretær:

Anette Persson
Københavns Universitet

Referent på foreningsmøder, udsender mødeindkaldelser til bestyrelses- og formandsmøder, vedligeholder medlemsregister og dokumentarkiv, står for det praktiske arrangement ved Årsmødet.



Kasserer:

Kåre Friss-Christensen
Vejdirektoratet

Løbende regnskab, årsregnskab og budget, kontingentoprævning og betalinger.



Web/Marketing:

Bo Birkedal Bekker
Banedanmark

Drift, vedligeholdelse og udbygning af foreningens hjemmeside.



BIM SIG

Formand Mikkel Bennedbæk, Atkins

Formål: At skabe et forum for brugen af intelligente designmodeller, samt at styrke forståelsen af arbejdsgange forbundet med BIM, særligt i forhold til arbejdsgangen: fra model til virkelighed og visa versa.

Ligeledes at styrke det digitale samarbejde imellem aktørerne i byggeri og anlæg, for projekterende, udførende, myndigheder, offentligheden og bygnings- og anlægsejere.



Civil SIG

Formand Lene Westh, Atkins

Formål: At skabe et forum for de medlemmer, som til daglig arbejder med Bentleys anlægsrelaterede applikationer. At formidle information og udveksle viden inden for Bentleys anlægsrelaterede applikationer. At videregive medlemmernes ønsker til leverandøren og herved være med til at præge produktudviklingen efter brugernes ønsker.



Data Management SIG

Formand Finn Mejding, COWI

Formål: Muligheden for at diskutere data håndtering i et bredt forum. Erfaringer vedr. dokumenthåndtering og vedligeholdelsessystemer med udgangspunkt i ProjectWise og AssetWise.

Desuden diskuterer SIG'en de udfordringer applikationer der er understøttet i dokument- og vedligeholdelsessystemerne giver.



GeoSpatial SIG

Formand Anders Sorgenfri Askholm, LE34

Formål: At skabe et forum for GEO SIGens medlemmer for at udveksle erfaringer og viden inden for Bentley Geospatial produkter, samt GEO-relaterede arbejdsområder med udgangspunkt i Dataudveksling med andre systemer, Databaser, ideer og erfaringer med fremstilling af konkrete produkter, Dataadministration af GEO-data mv.



MicroStation SIG

Formand Tine Lai Andersen, Niras

Formål: At skabe et forum for både en almindelig bruger samt administratorer, hvor man kan udveksle erfaringer og udfordringer vedr. MicroStation & applikationer der har relation til MicroStation platformen. Målet er også at skabe et godt og uformelt brugernetværk med masser af erfarings udveksling.



Plant SIG

Formand Kenn Boemann Hansen, Niras

Formål: At skabe et forum for udveksling af erfaring og viden inden for Bentley Plant produkter så som OpenPlant, AutoPLANT, PlantSpace og generelle plant-værktøjer.

TID:

Mandag d. 5. november kl. 9.00-19.00
Tirsdag d. 6. november kl. 9.00-18.00
Onsdag d. 7. november kl. 9.00-16.00

STED:

Munkebjerg Hotel,
Munkebjergvej 125,
7100 Vejle

Telefon +45 76 42 85 00
www.munkebjerg.dk

PRIS:

Medlemmer af bentleyuser:
Mandag-tirsdag - 1 middag og 1 overnatning: 4.200,- d.kr.
Mandag-onsdag - 2 middage og 2 overnatninger: 5.700,- d.kr.

Ikke medlemmer:
Tillæg for ikke medlemmer 1.000,- d.kr.

TILMELDING:

Senest fredag d. 26. oktober 2018
Tilmelding via foreningens webside: www.bentleyuser.dk

Tilmelding er bindende.
Hotelværelser tildeles efter først-til-mølle-princippet.
Når alle værelser på Munkebjerg er besat, vil senere tilmeldte blive tildelt værelse på et andet hotel i nærheden.

Der bliver arrangeret gratis bustransport mellem hotellerne.

