



# Customizing Your Civil Application to Work How You Work

Mike Wilson, Bentley

# What We Will Learn Today

*You will learn to make yourself more productive by customizing MicroStation, PowerCivil for Denmark, PowerInRoads or MXROAD to the way you work and think.*

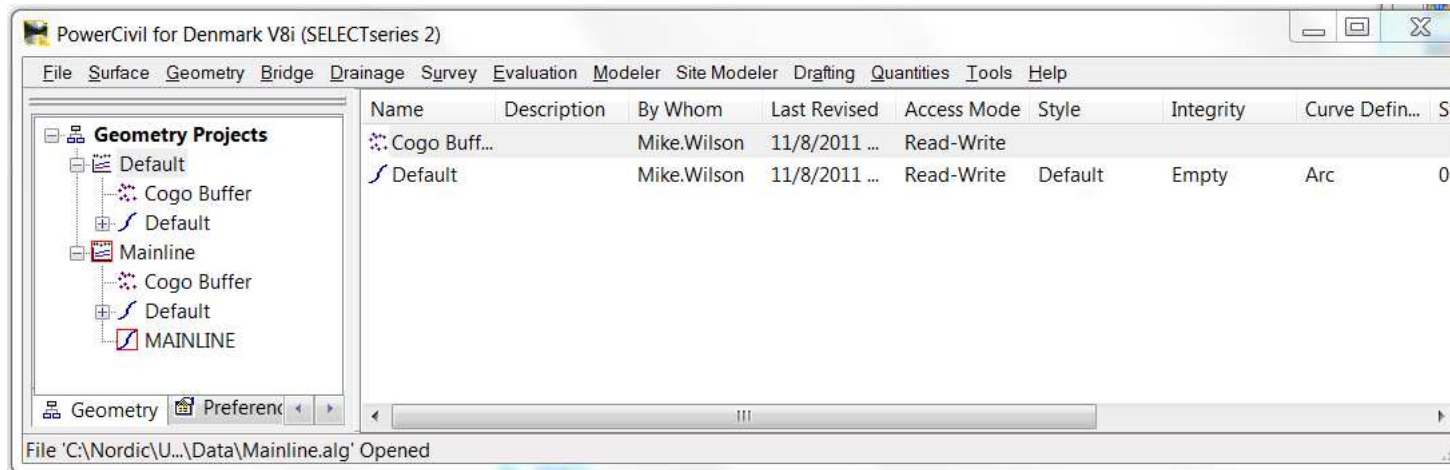
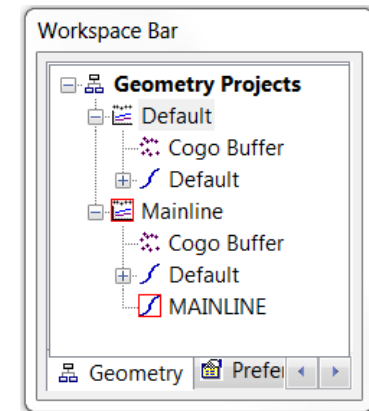
- Today we will look at a variety of options for customizing
- Let's get started...

# Mike Wilson's Favorite Command

- Of all the commands one stands above them all.
- I like it better than cross sections
- I like it better than roadway designer
- And it is...

# Power InRoads / InRoads Explorer

- Hide to Increase Visible Screen
  - Right-click > Show/Hide Explorer
  - Power InRoads Tools > Show/Hide Explorer
  - Applications > InRoads Group > Tools > Show/Hide Explorer
- Pull-off Workspace Bar

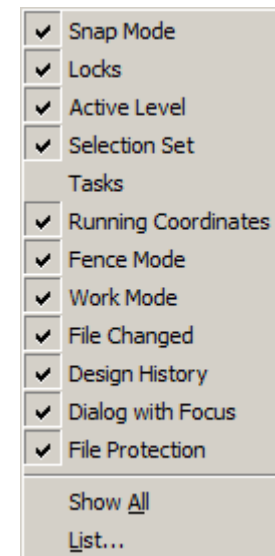


# Let's Try It...



# Personalizing the Status Bar

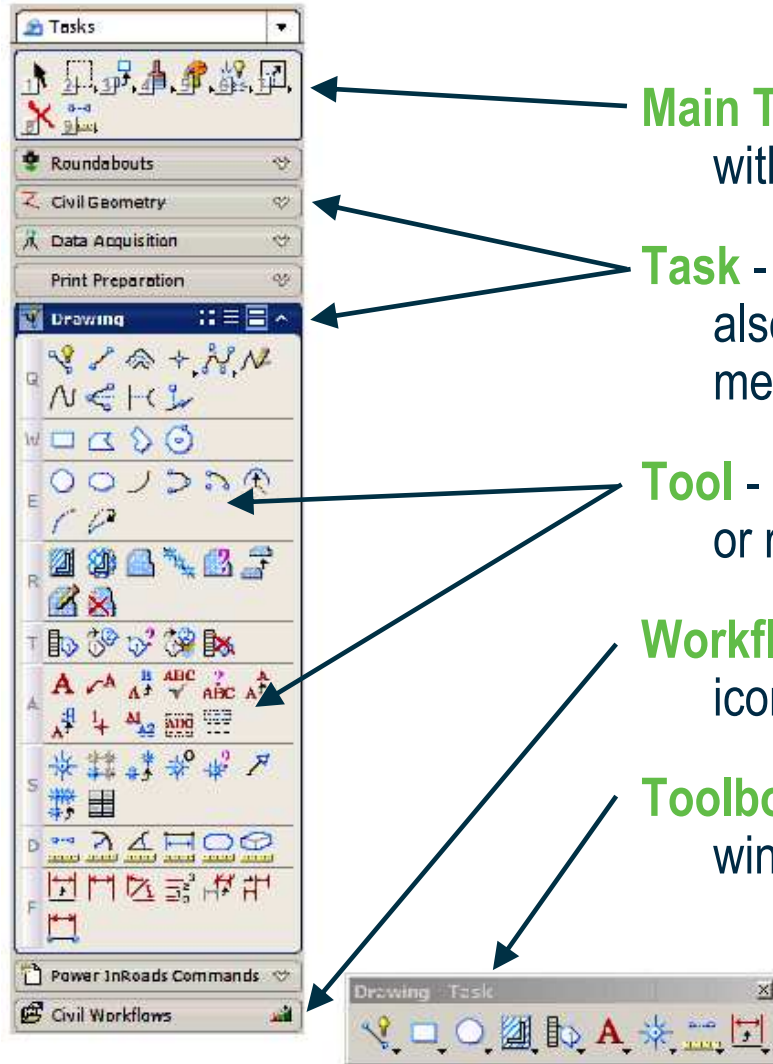
- Right-click to customize
- Add Running Coordinates
- .
- .
- Let's explore...



# Let's Try It...



# Task Terminology



**Main Task** - a common set of tools visible along with the task.

**Task** - a set of tools grouped for a job. Tasks can also have sub-tasks that form cascading menus.

**Tool** - a button on a task that performs an action or runs a command.

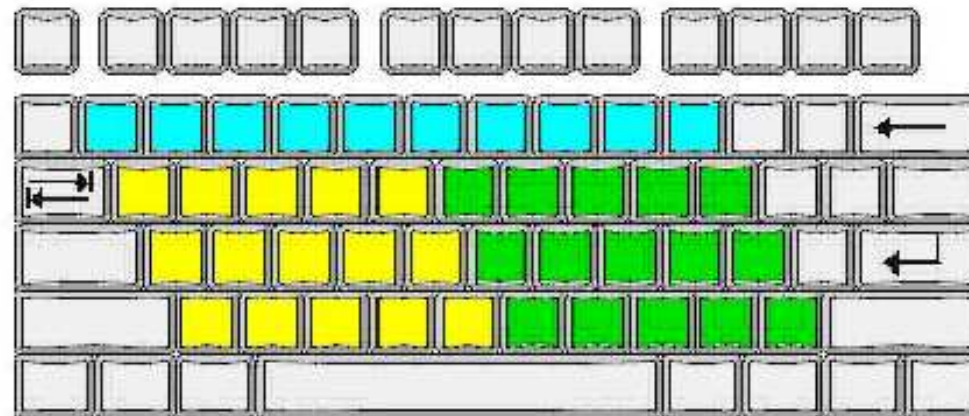
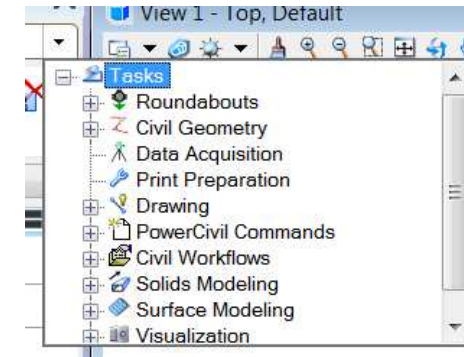
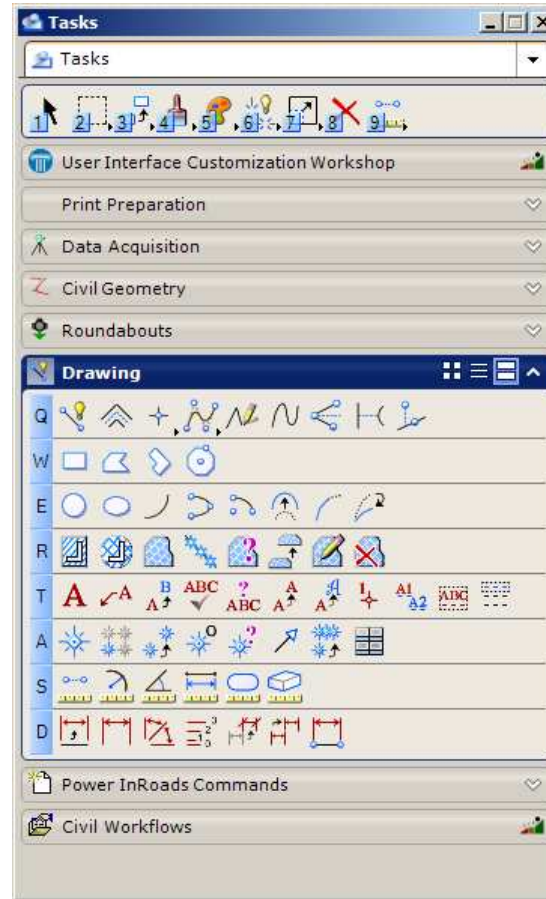
**Workflow** - a group of tasks. Notice the different icon.

**Toolbox** - a task displayed as a separate window.



# Using Tasks

- Navigating
- Task Dialog
- Tool Boxes
- Docking
- Pinning
- Show/Hide
- Positional Mapping

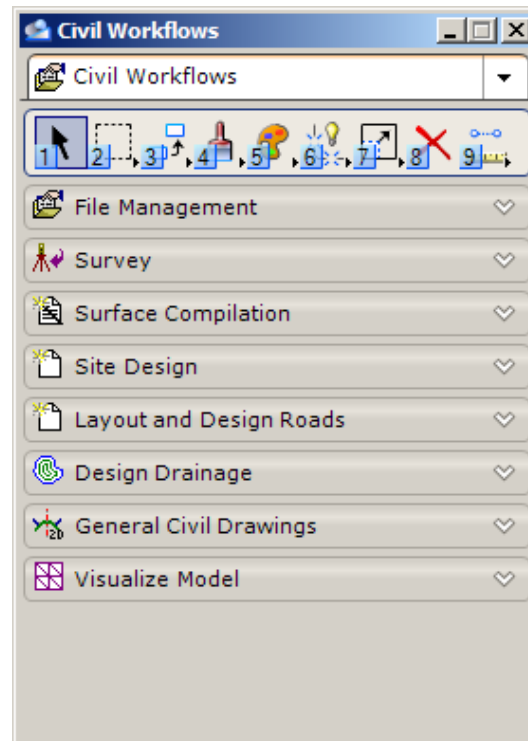


# Let's Try It...



# PowerCivil Tasks

- Data Acquisition
- Civil Geometry
- Roundabouts
- Civil Workflows
- Use as Delivered
- or –
- As Basis for Customization

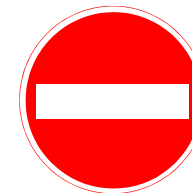
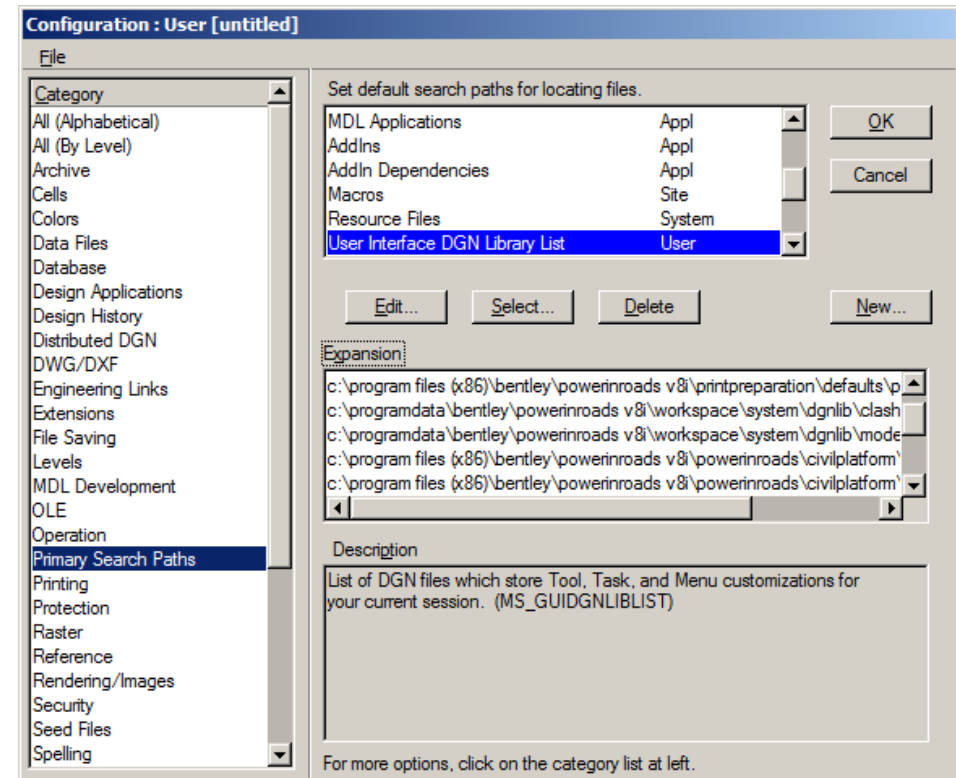


# Let's Try It...



# Customizing Tasks

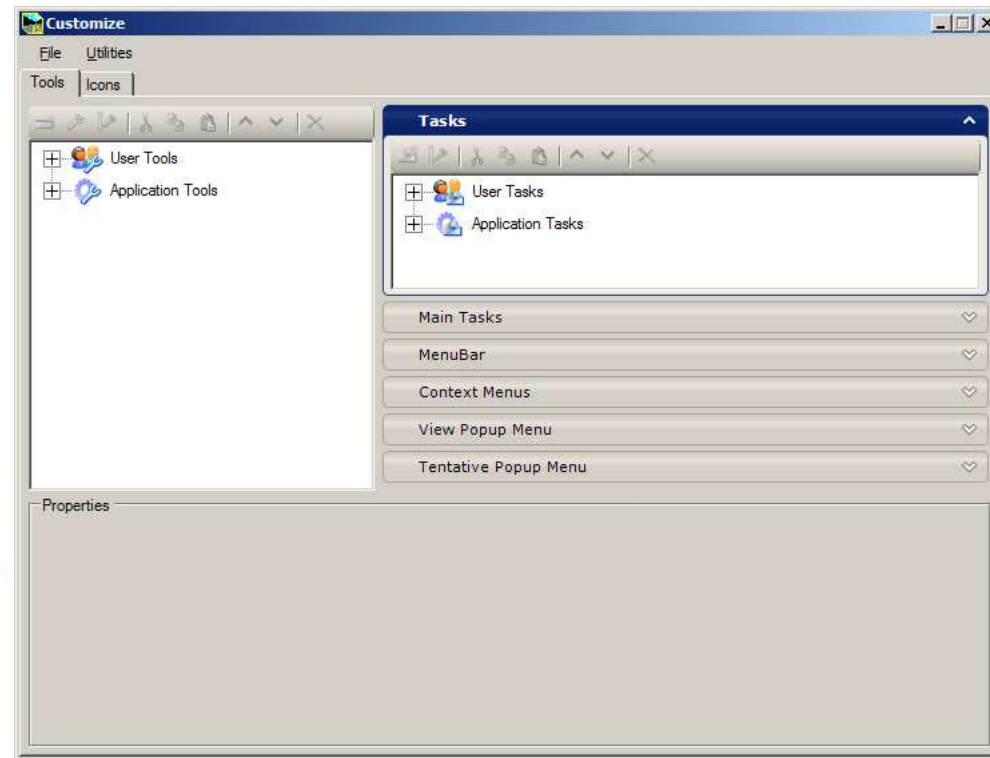
- Customizations Done in a .dgnlib file
- Must be in the .dgnlib
- .dgnlib Must be in Configuration Path
  - Primary Search Paths > User Interface DGN Library List
  - MS\_GUIDGNLIBLIST
- Avoid Editing Delivered .dgnlib Files



# Customization Dialog

## Tools

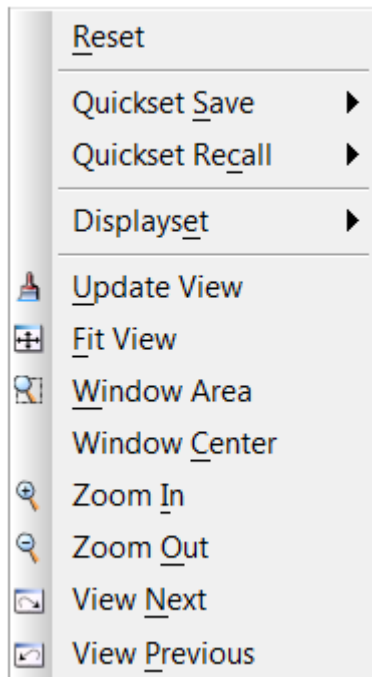
## Tasks



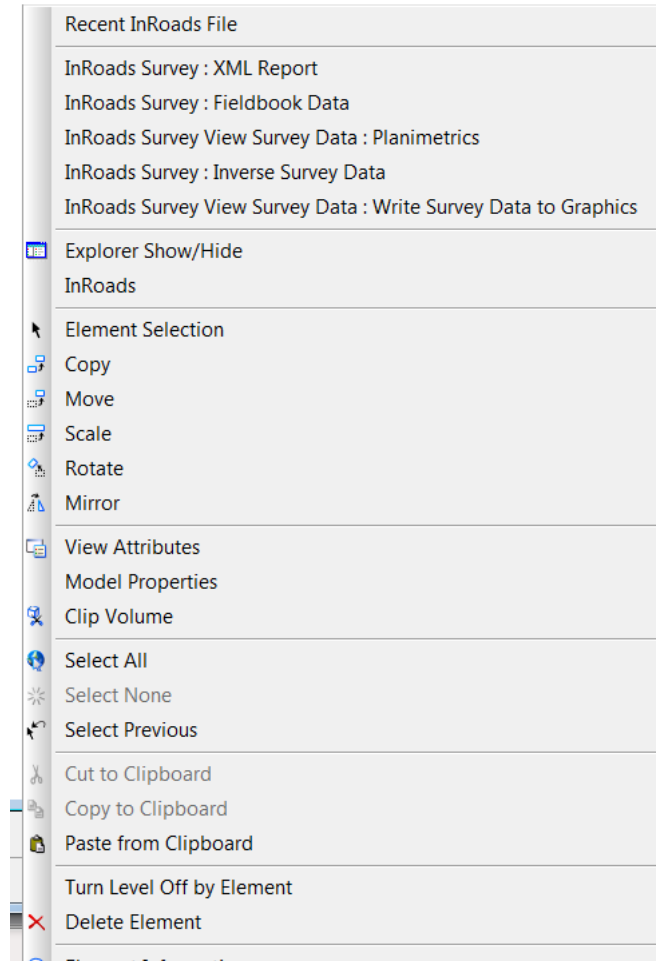
## Properties

# Menus

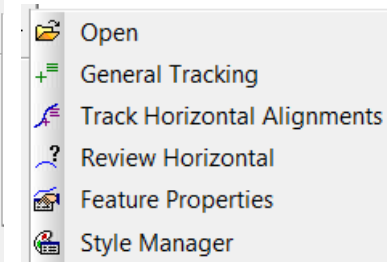
## View Popup Menu



## Context Menu



- 1 C:\Nordic\Using the New Geometry Tools in P...\Data\Mainline.alg
- 2 C:\Product Data Sets\InRoads - Standard\civil.xin
- 3 C:\Product Data Sets\InRoads - Standard\existing.dtm
- 4 C:\Product Data Sets\InRoads - Standard\proposed.dtm
- 5 C:\Product Data Sets\InRoads - Standard\MS\_Project.rwk
- 6 C:\Product Data Sets\Roadway Designer\Bridge\_JW\original.dtm
- 7 C:\Product Data Sets\Roadway Designer\Bridge\_JW>Create Template.alg
- 8 C:\Product Data Sets\Roadway Designer\Bridge\_JW\complete.ird
- 9 C:\Product Data Sets\Roadway Designer\Bridge\_JW\civil.xin

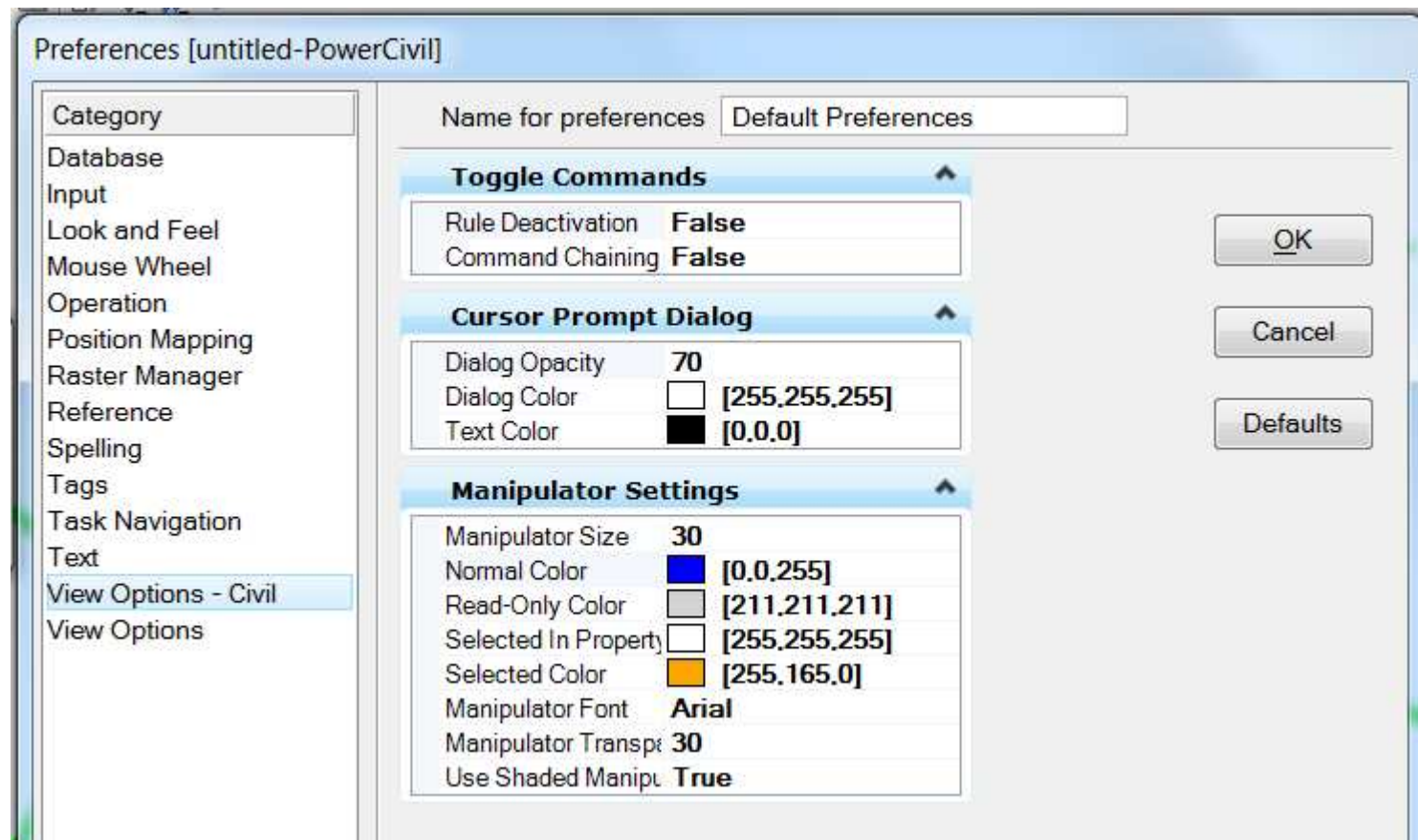
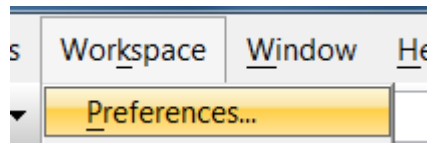


# Let's Try It...





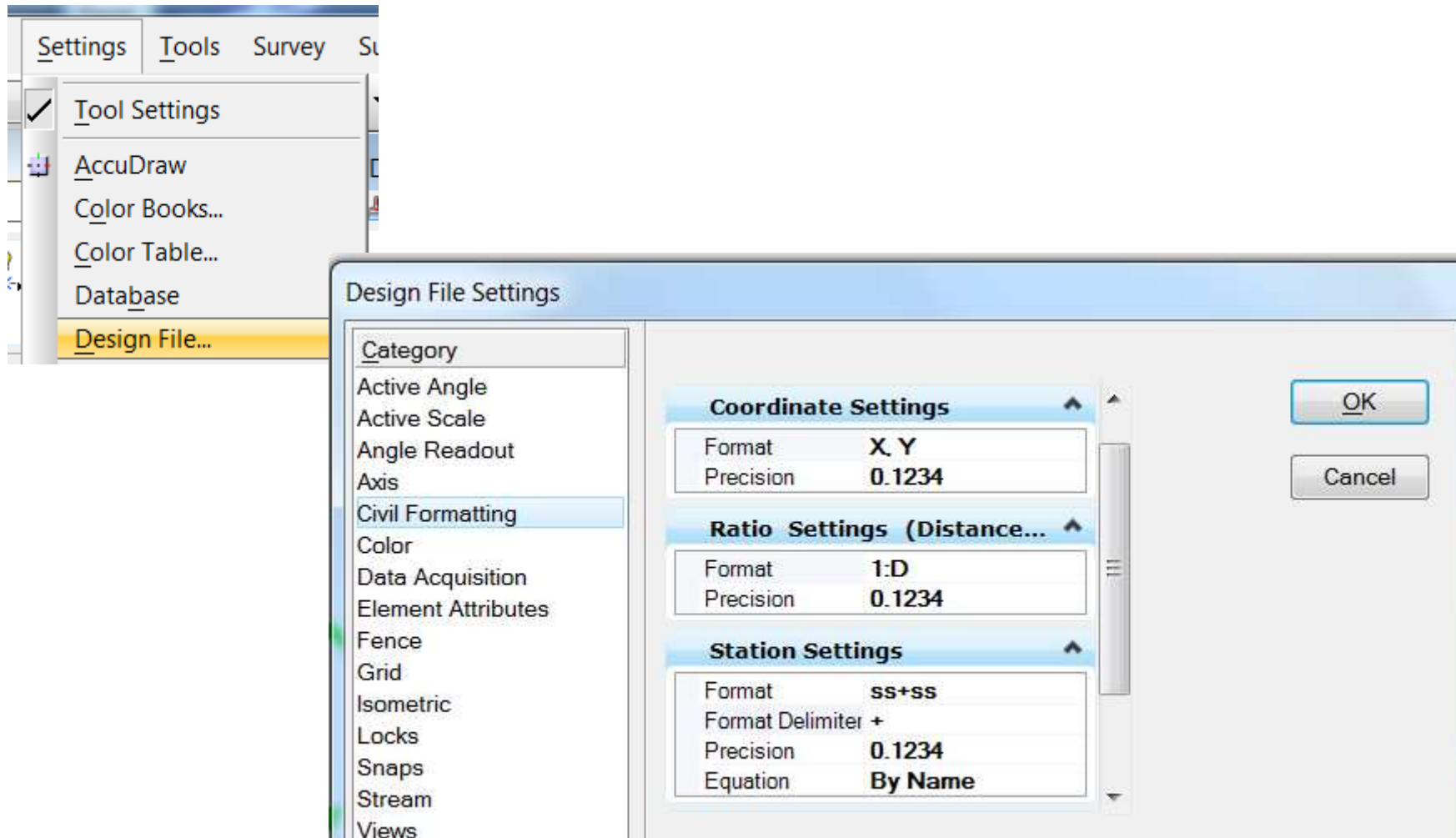
# Civil Items



# Let's Try It...



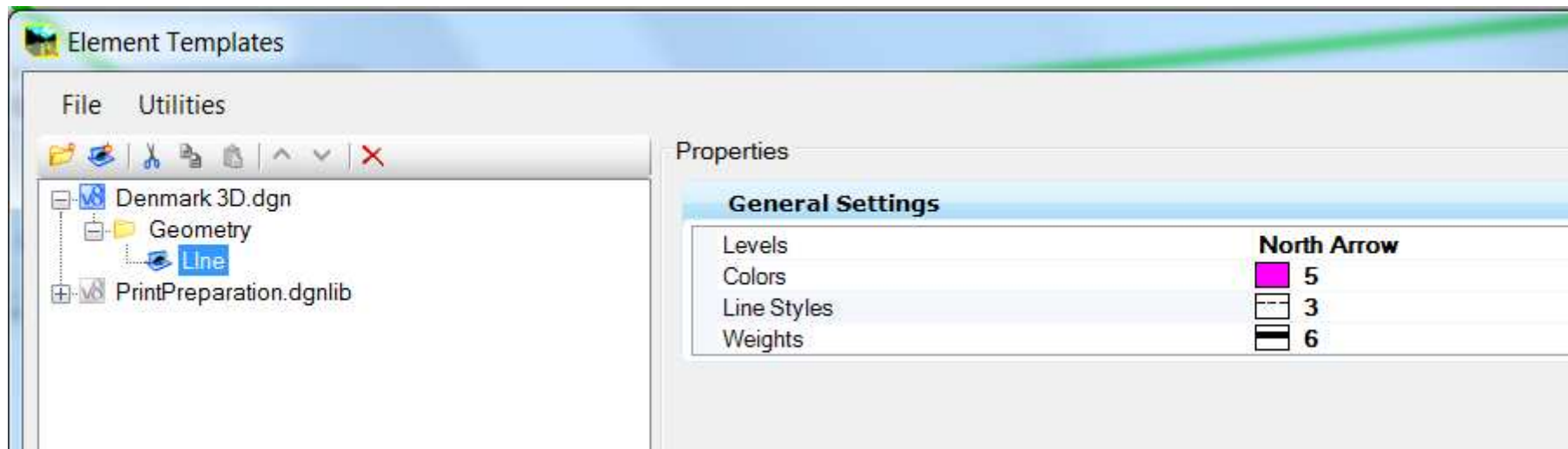
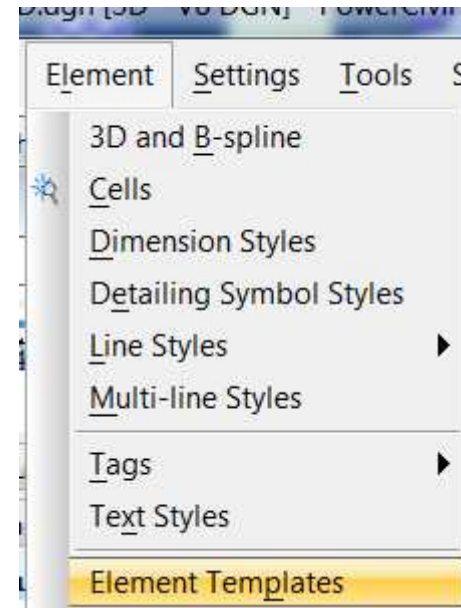
# Design File Settings



# Let's Try It...



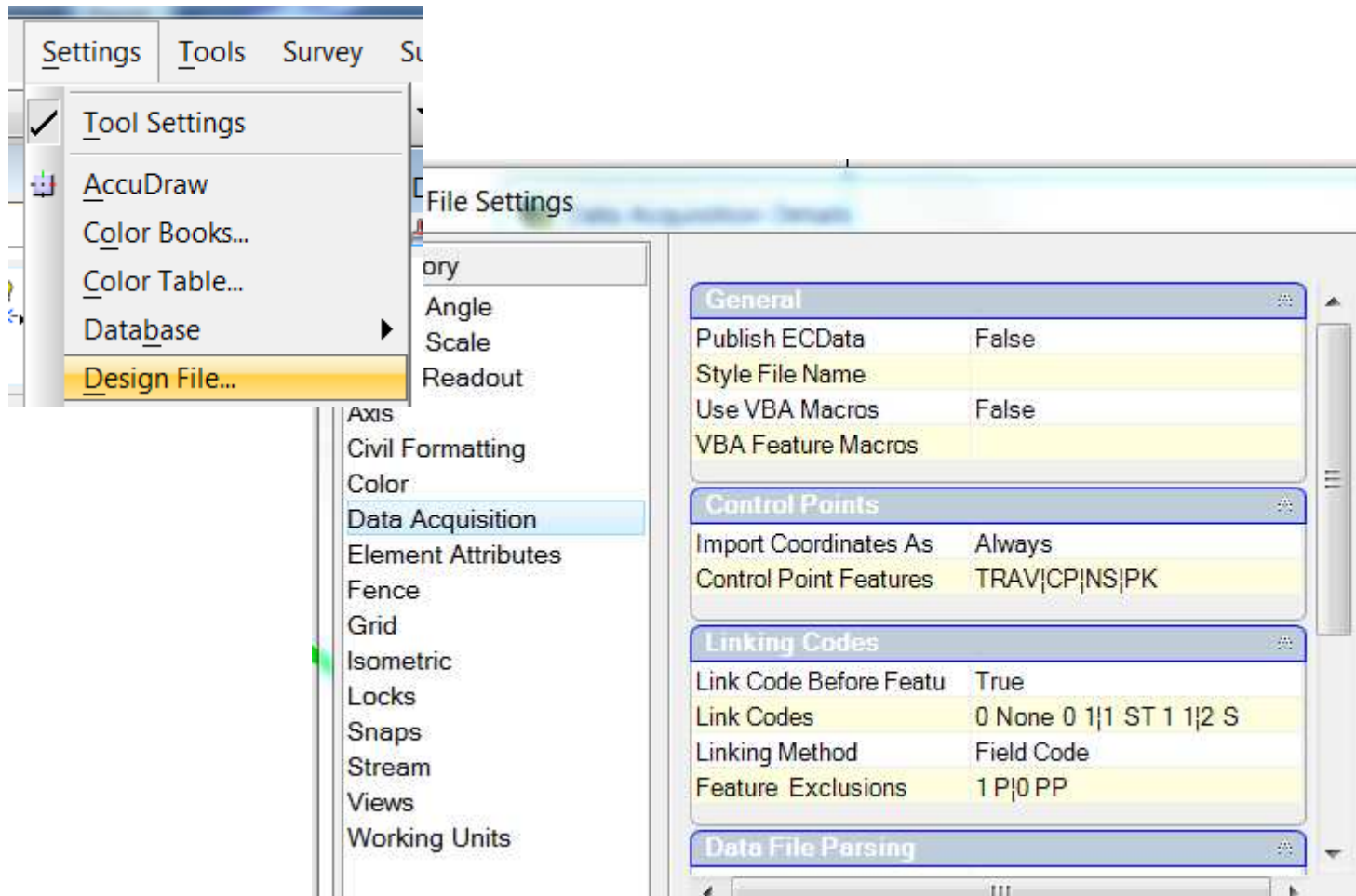
# Element Templates



# Let's Try It...



# Design File Settings



# What is your favorite customization?



# Thanks!!