

BentleyUser.dk 2010 AutoPLANT Product Update, 8th November

Chris Binns – AutoPLANT Product Manager

Agenda

- Introduction to me
 - Who I am, my background etc.
- Latest AutoPLANT Release
- Current AutoPLANT Development Projects
 - Active projects
- AutoPLANT RoadMap
 - Plans for 2011
- Questions?

Introduction to me

- 1985 – Began working life with Costain Petrocarbon
- 1997 – EDC Photonic, Rebis reseller
- 2000 – Rebis UK
- 2003 – Bentley Acquired Rebis
- 2006 – Appointment Product Manager for P&IW apps
- 2010 – Appointed Product Manager for all AutoPLANT apps
- 13+ AutoPLANT experience
- Primary focus to re-energise AutoPLANT in the market

Introduction me



Latest AutoPLANT Release

V8i

- AutoPLANT V8i (SELECTseries 2)
 - PDW, P&ID, P&IW v08.11.07.60
 - Released end of May 2010
- Compatibility enhancements in V8i (SELECTseries 2)
 - AutoCAD 2010, 2011 & RealDWG support
 - ProjectWise V8i (SELECTseries 1) support
 - ProSteel V8i (SELECTseries 3) support
 - Windows 7 (32-bit) support
 - Windows Standard User + UAC enabled support
 - SQL Server 2008 & ORACLE 11g support
 - ISOGEN v9.3 support



Latest AutoPLANT Release

V8i

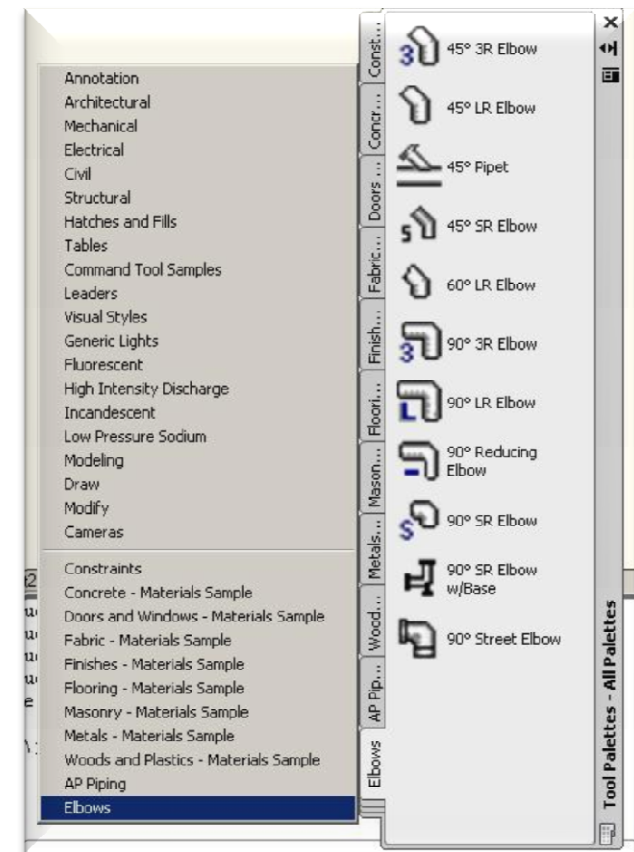
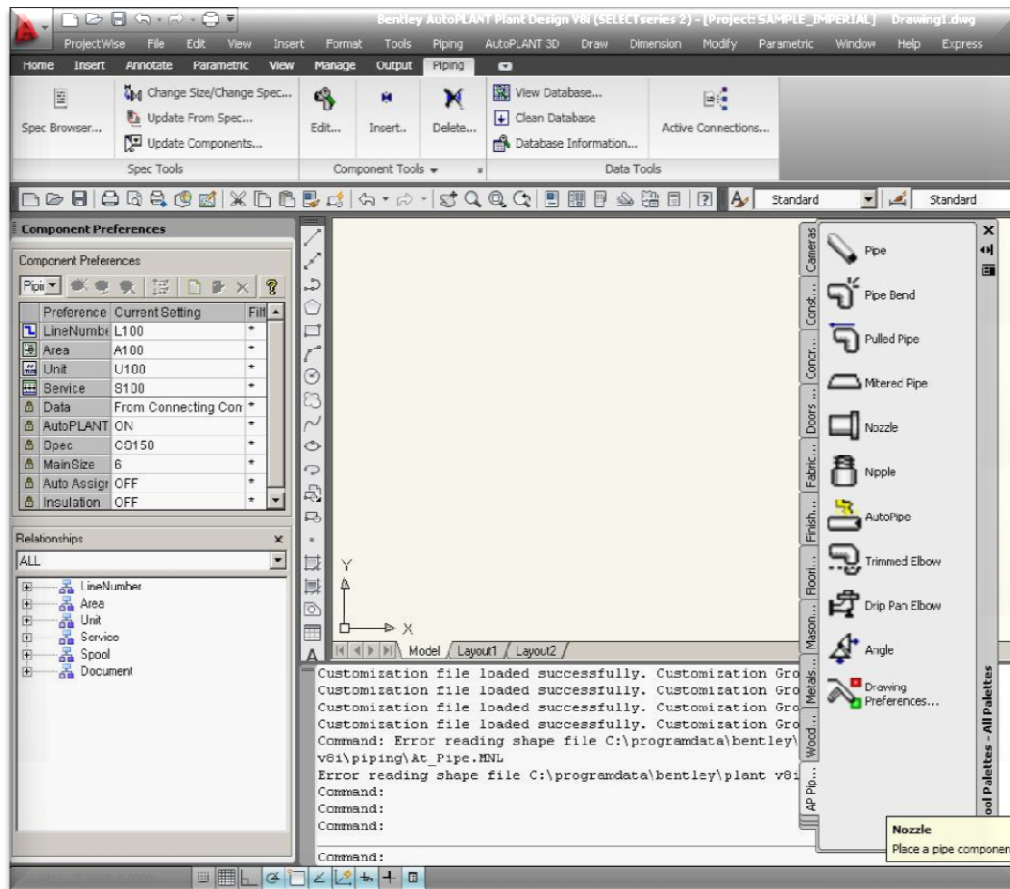
- AutoPLANT V8i (SELECTseries 2)
- Software enhancements:
 - Complete .XLSX support
 - Automatic Project.mdb compression
 - Data Manager tag deletion enhancements
 - Create & Copy projects from ProjectWise explorer
 - Copper tube solder joint & Auto-fit for Wyes and Crosses
 - Drawing Flattener enhancements
 - I/O cards design enhancements
 - Single Line Diagram symbol management enhancements

Current AutoPLANT Development Projects

- Project “**Viking**” – AutoPLANT V8*i* (SELECTseries 3)
 - Project commenced 5th July 2010
 - Docking of project Gemini (AutoPLANT 64-bit)
 - MS Office 2010 support
 - Ribbon Menus and Tool Palettes for PDW and P&ID
 - Split Pipe functionality
 - Address prioritised ProjectWise Self-Assessment issues
 - OpenPlant P&ID <> PDW class mappings
 - Solutions Workflow Testing
 - Defects addressed & Minor enhancements included

Current AutoPLANT Development Projects

- Project “Viking” – AutoPLANT V8i (SELECTseries 3)



Current AutoPLANT Development Projects

- Project “**Viking**” – AutoPLANT V8*i* (SELECTseries 3)
 - Collaboration Product Certification:
 - ProjectWise V8*i* (SELECTseries 2) & (SELECTseries 3)
 - i-model Composer, Navigator, Bentley View V8*i* (SELECTseries 2) & (SELECTseries 3)
 - Autopipe V8*i* (SELECTseries 1) & (SELECTseries 2)
 - ProSteel V8*i* (SELECTseries 3)
 - Testing of non-AutoCAD based apps on 64-bit O/S
 - AutoPLANT V8*i* (SELECTseries 3) = 32-bit & 64-bit support
 - Target release March 2011 (delayed from November 2010)
 - To enable AutoPLANT 64-bit Early Adopter Program to be carried out
 - Also to enable certification with ProjectWise V8*i* (SELECTseries 3)
 - To dock feature based projects; Explorer & Phoenix

Current AutoPLANT Development Projects

- Project “**Gemini**” – AutoPLANT 64-bit
 - AutoCAD based apps only, PDW & P&ID
 - Data Manager, Vision, Datasheets, I&W remaining 32-bit
 - 64-bit compatible Scripting Engine from Summit Software
 - No conversion of existing and customised scripts required 😊
 - PDW feature complete at end of October 2010
 - 8 PDW builds submitted to QA
 - P&ID work underway, following PDW
 - 3 P&ID builds submitted to QA so far
 - Testing with ProSteel V8*i* (SELECTseries 3) underway
 - 64-bit Drawing Flattener available for testing
 - Early Adopters Program from mid-Jan 2011
 - Available in AutoPLANT V8*i* (SELECTseries 3) – March 2011

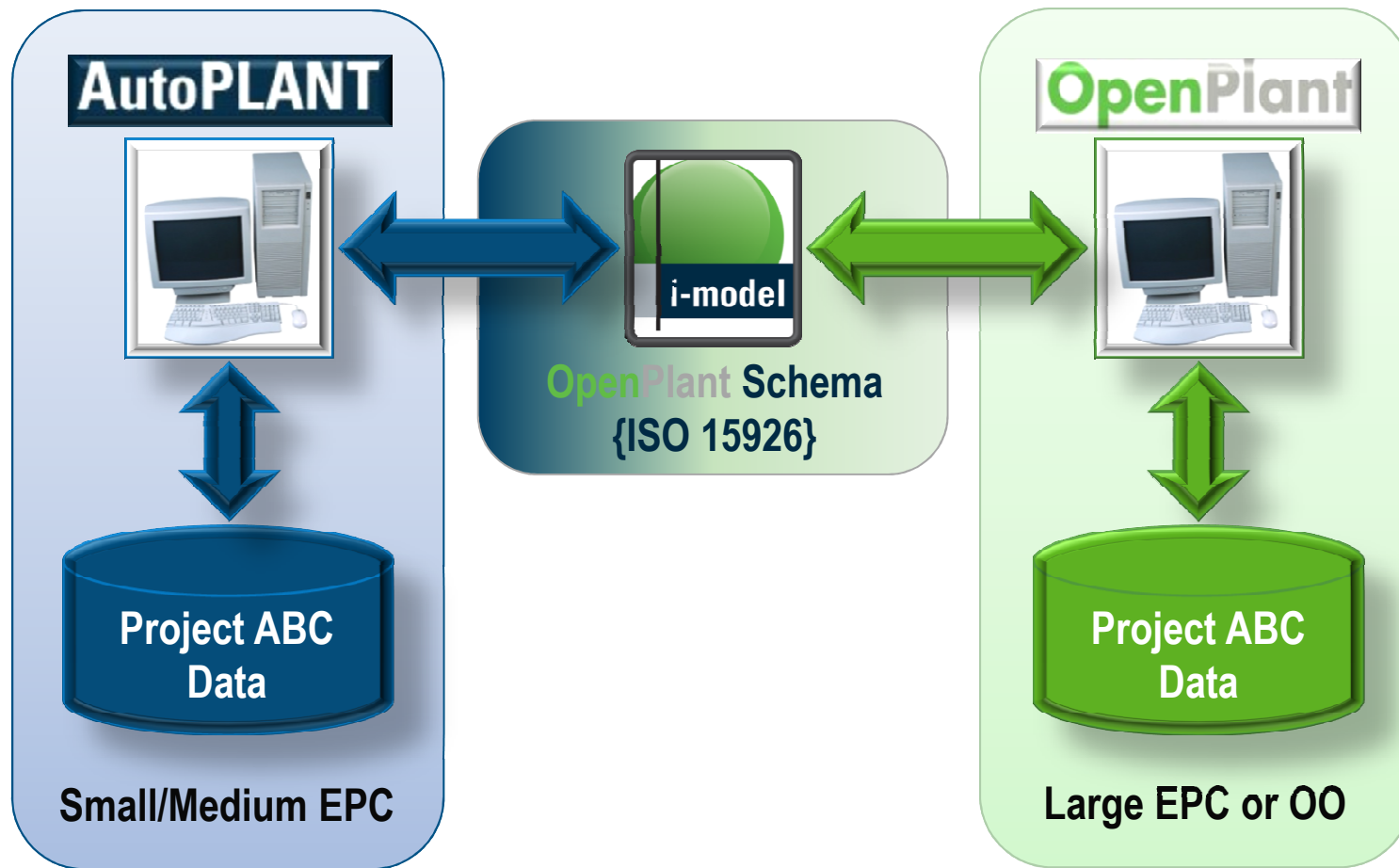


Current AutoPLANT Development Projects

- Project “**Explorer**” – OpenPlant i-models & OpenPlant Isometrics Manager integration
 - First phase of AutoPLANT & OpenPlant Interoperability
 - Project Explorer has 2 parts relating to AutoPLANT
- Part 1 - Create OpenPlant i-models from AutoPLANT
 - i-models created from within the AutoPLANT interface
 - “**Create i-model**” button inside AutoPLANT
 - Removed i-model Composer from workflow
 - i-model based on same ISO 15926 schema as OpenPlant
 - i-models consumable by OpenPlant for review
 - Available in AutoPLANT V8*i* (SELECTseries 3) – March 2011

Current AutoPLANT Development Projects

- Goal is AutoPLANT & OpenPlant use on same project



Current AutoPLANT Development Projects

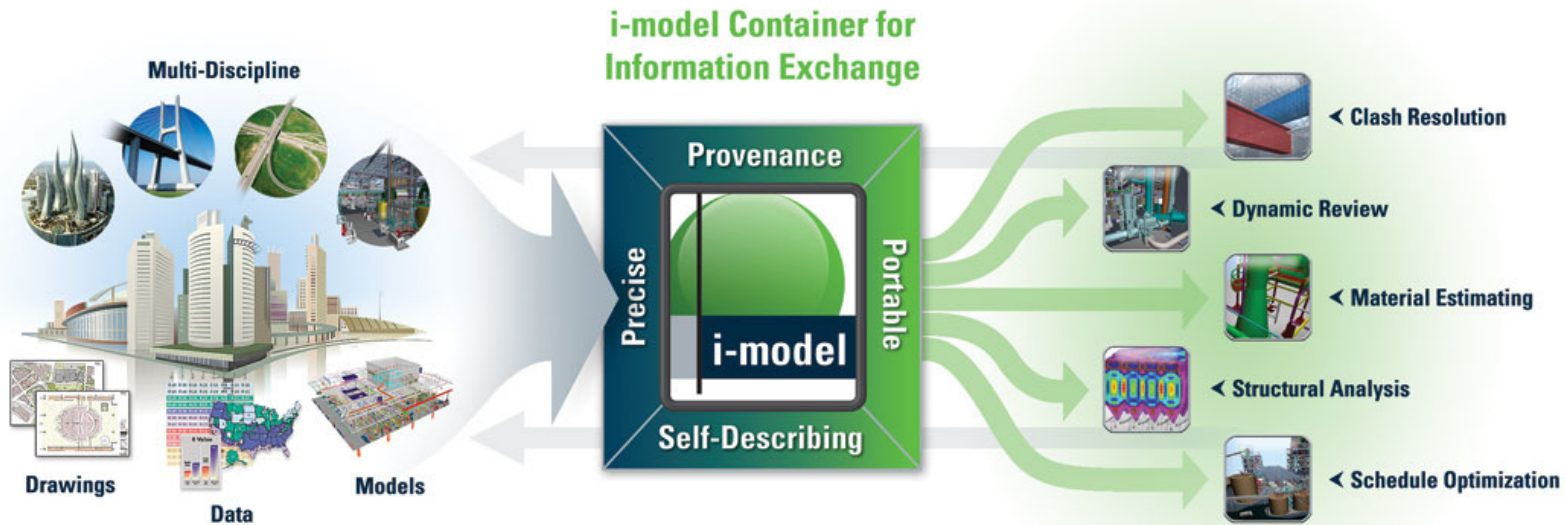
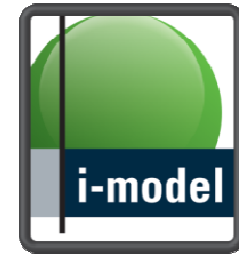
- Part 2 - OpenPlant Isometrics Manager Integration
 - Provide an *alternative* to ISOGEN
 - ISOGEN will still be supported
 - Iso's created via an i-model published from AutoPLANT
 - OPIM consumes the i-model to create the iso's
 - Workflows will remain similar i.e. "**Create Iso**" button
 - Will **not** require OpenPlant Modeller
 - Automation will be possible by ProjectWise Orchestration
 - Will **not** require ProjectWise for "manual" creation of iso's
 - Functionality available with V8*i* SELECTseries 4 – May 2011

“So what *is* an i-model?”



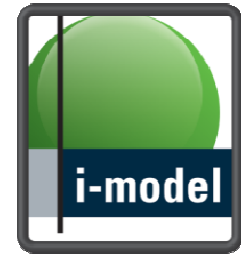
- “An *i-model* is an immutable container for rich multi-discipline information published from a known source, at a known time, at a known state” .
 - A read-only published rendition of the model
 - A portable, self-describing, rich data file
 - An interoperable deliverable for change management
 - Bentley’s currency of information exchange

“So what *is* an i-model?”



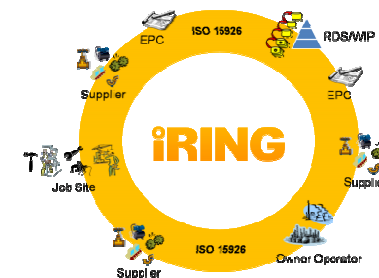
“When would I use an i-model?”

- Exchanging project information
 - Between both Bentley *and* 3rd party applications
- Project information review
 - Dynamic Review at project milestone
- For change management
 - When iterative delivery is required
- For reuse of project information
 - Publish project information for different purposes



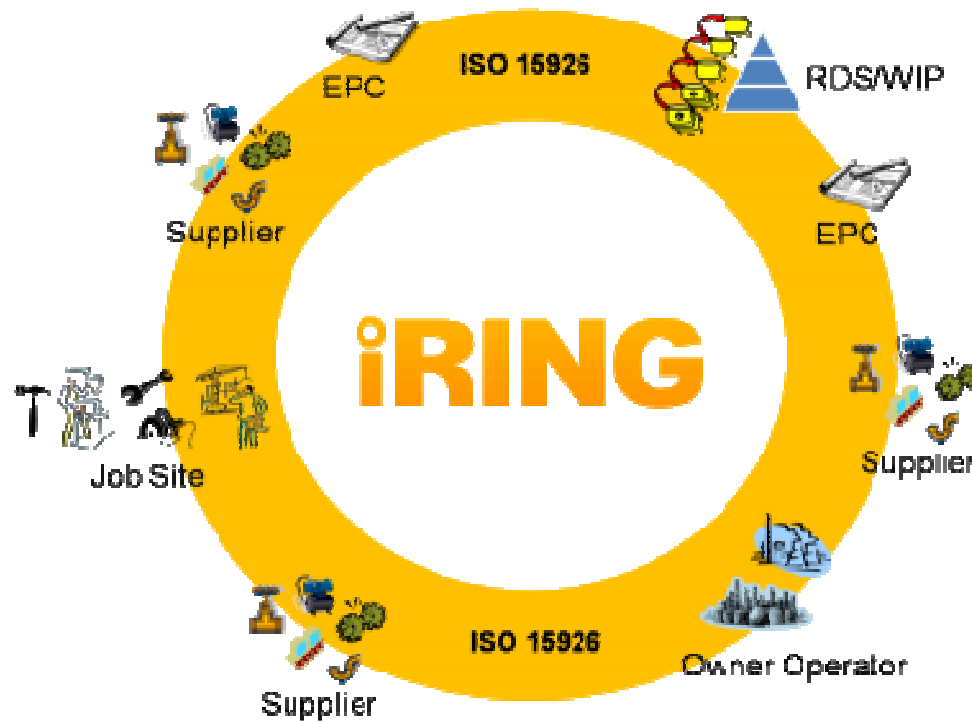
Current AutoPLANT Development Projects

- Project “**Blues 2**” – Data Interoperability via iRING
 - Sharing “1D” data via the internet in ISO 15926 format
 - Valve Lists
 - Line List
 - Instrument & I/O Lists
 - Targeted workflow - Sharing I/O data with DCS vendors
 - Bentley Systems & Emerson Process plan to work together
 - EPC publishes I/O data to the iRING
 - DCS vendor consumes, processes & publishes back to iRING
 - EPC consumes the data to complete deliverables



“So what *is* the iRING?”

- ISO 15926 **R**ealtime **I**nteroperability **N**etwork **G**rid



FIATECH

iRING
— USER GROUP

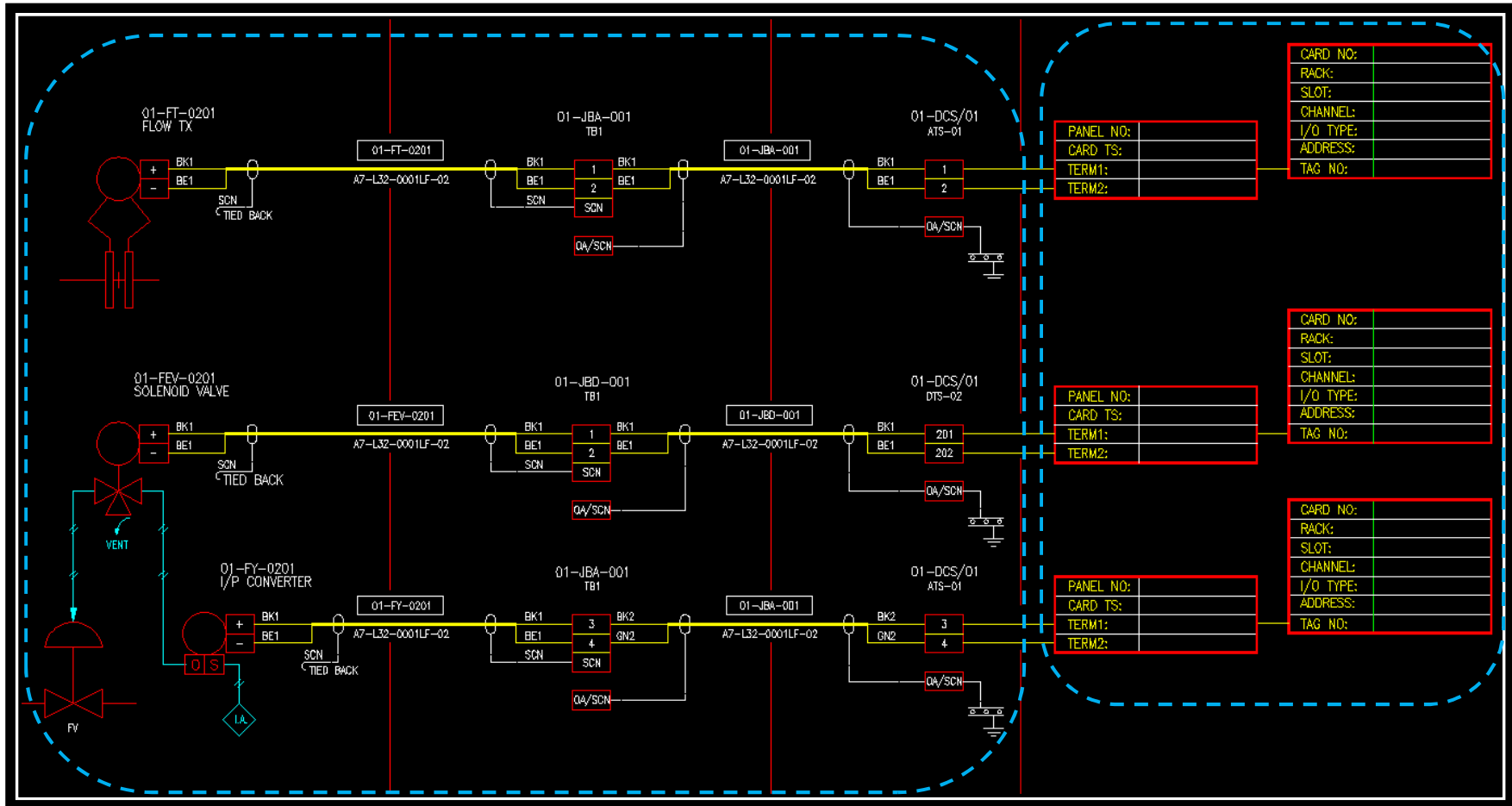
POA POSC Caesar
Association

“So what *is* the iRING?”

- iRING objectives are to deploy an ISO 15926, open source infrastructure on the internet to enable:
 - The use of ISO 15926 in modelling business information
 - To provide publically available tools to map legacy systems to ISO 15926
 - Data exchange between companies using ISO 15926 via the internet
- Bentley are an active partner in this undertaking

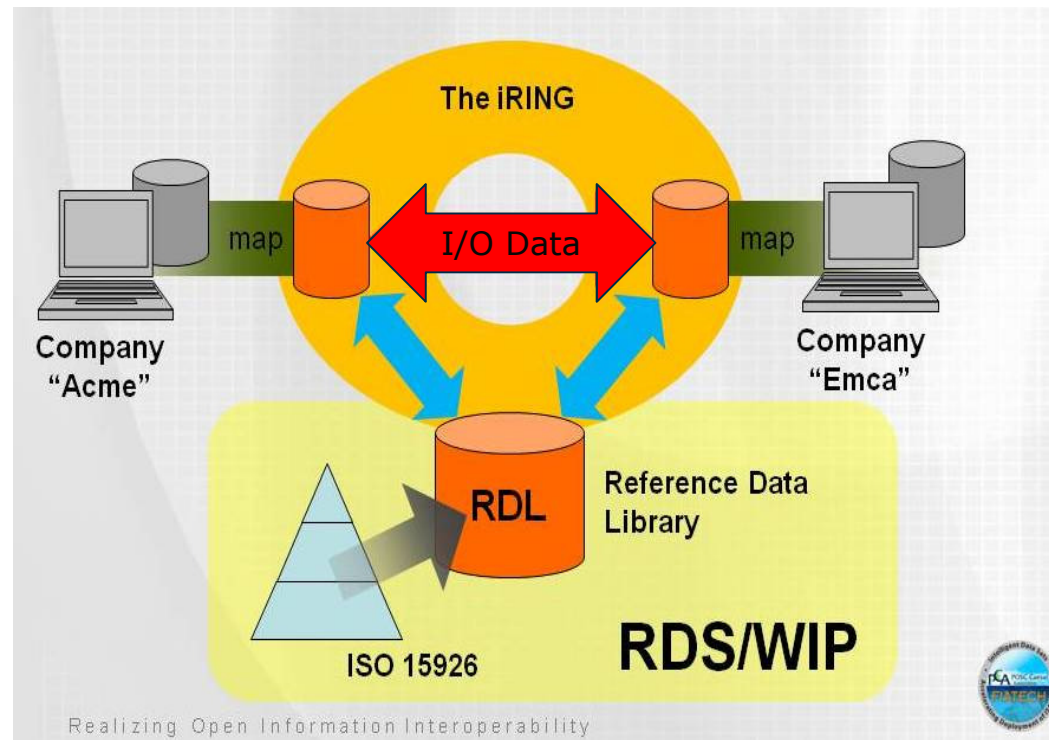
iRING Targeted Workflow

- Sharing I/O data with a control system vendor



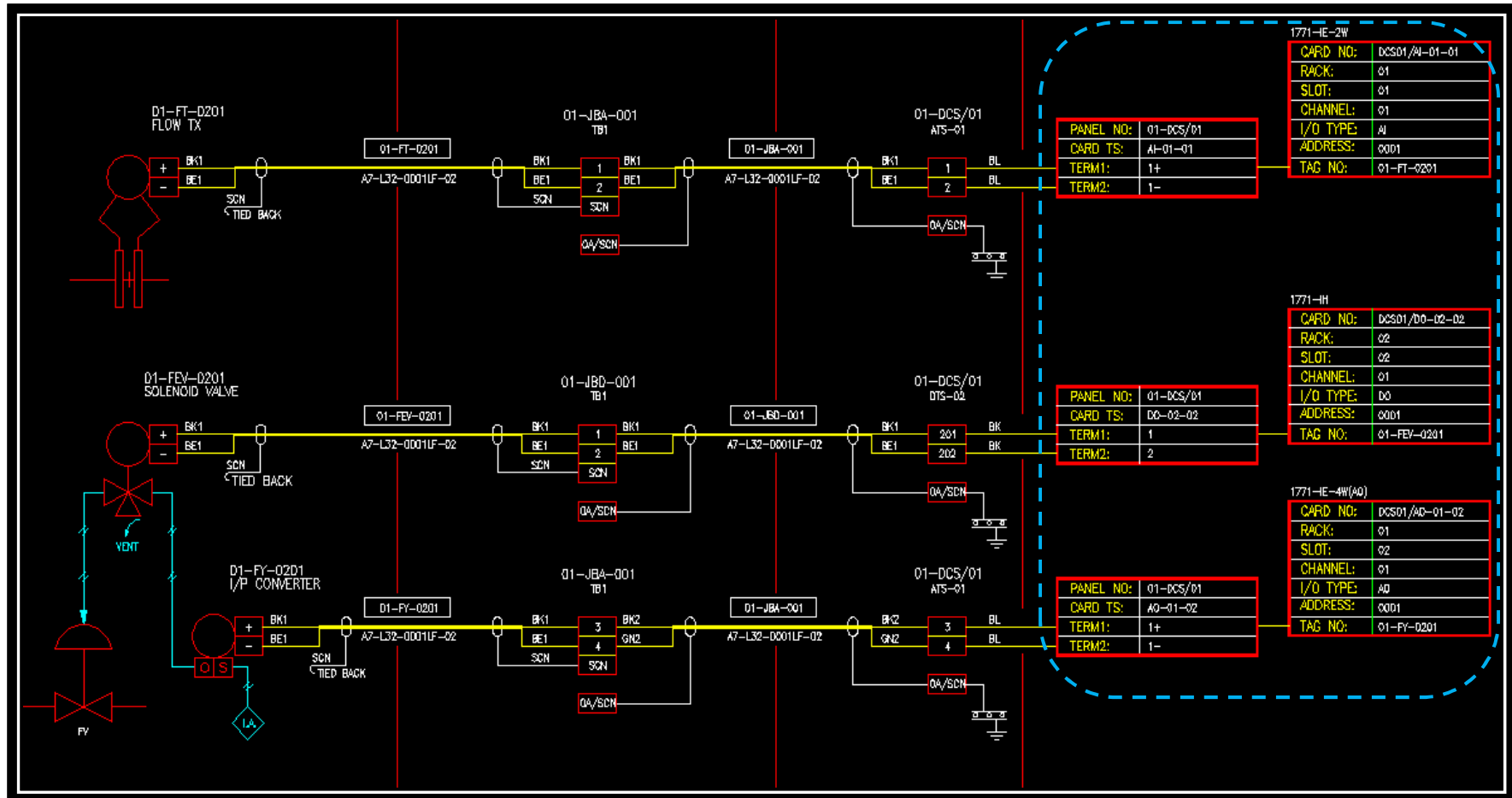
iRING Targeted Workflow

- “Acme” = EPC
- “Emca” = Control System Vendor



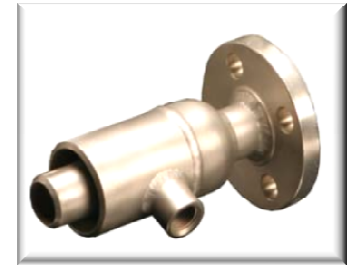
iRING Targeted Workflow

- Loop deliverable now complete

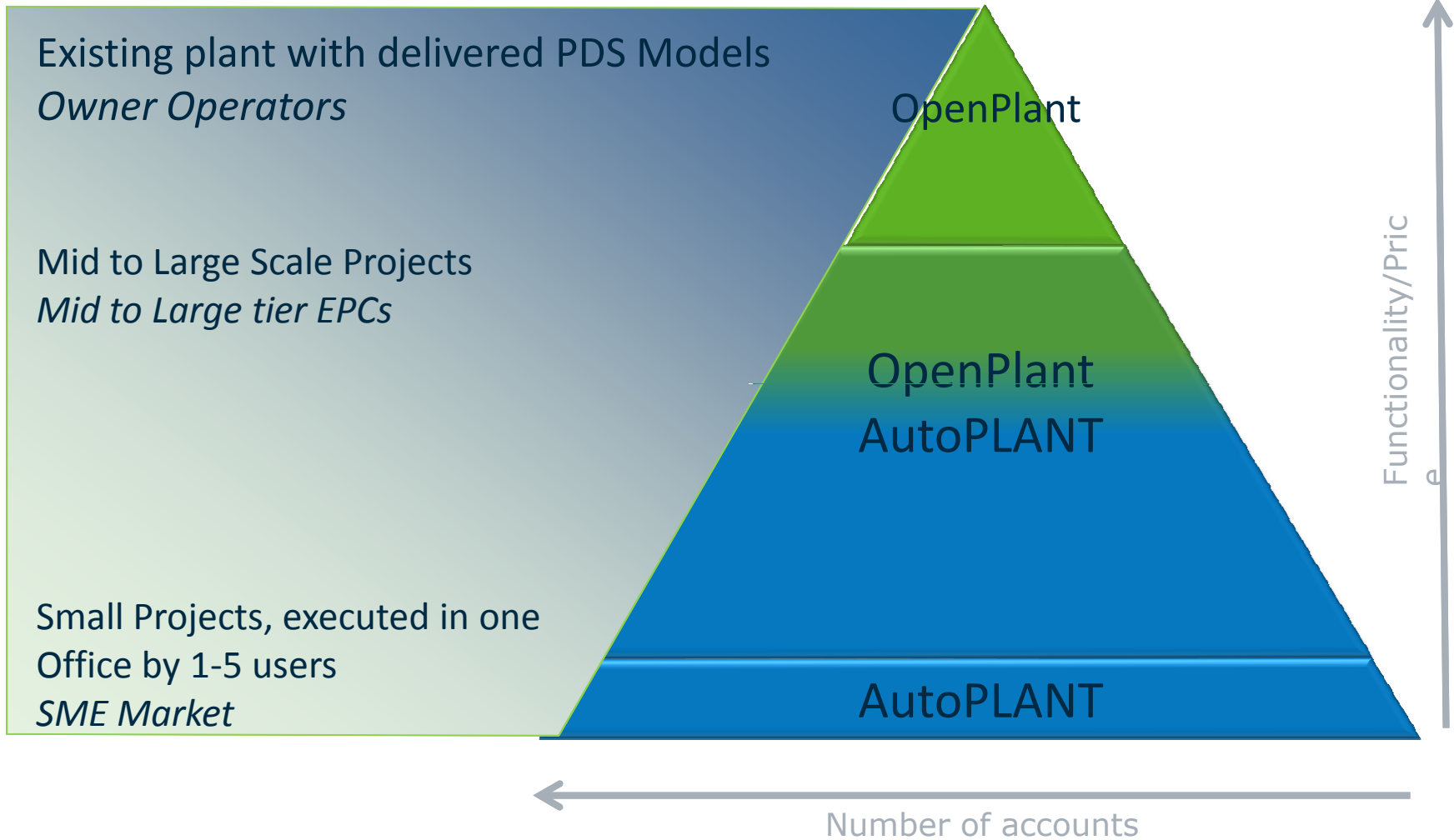


AutoPLANT Development Projects

- Project “**Phoenix**” – Jacketed Piping Module
 - Ability to model/route jacketed piping systems
 - Partial & Full jacketing
 - First phase = pipe work only, not equipment or valves
 - Provide manufacturer component catalogue content
 - Isometric generation via ISOGEN and OPIM
 - 2D General Arrangement drawing creation
 - Joint effort by Bentley Software, Professional Services and Content Group
 - Available in AutoPLANT V8*i* (SELECTseries 3) – March 2011



Market Segmentation



AutoPLANT Development Road Map

2011 - March

AutoPLANT V8*i* (SELECTseries 3) Release

64-bit compatible version of AutoPLANT V8*i*

i-model creation from AutoPLANT interface

"1D" i-models published to iRING

Jacketed Piping Module – Phase 1

AutoPLANT Development Road Map

2011 - September

AutoPLANT V8*i* (SELECTseries 4) Release

OpenPlant Isometrics Manager Integration

Leverage New AutoCAD 3D graphics engine

AutoPLANT P&ID to OpenPlant P&ID migration tools

Bentley Raceway & Cable Management Integration

Incorporate OpenPlant Nozzle Manager functionality



Questions?

- Thank you very much
- Chris.Binns@Bentley.com