

Space Planner

Bogdan wasylkiw

Space Planner

What is Space Planner

Differences

Functions

Navigation

Properties

Thematic maps

Search/Reports

Space Planning

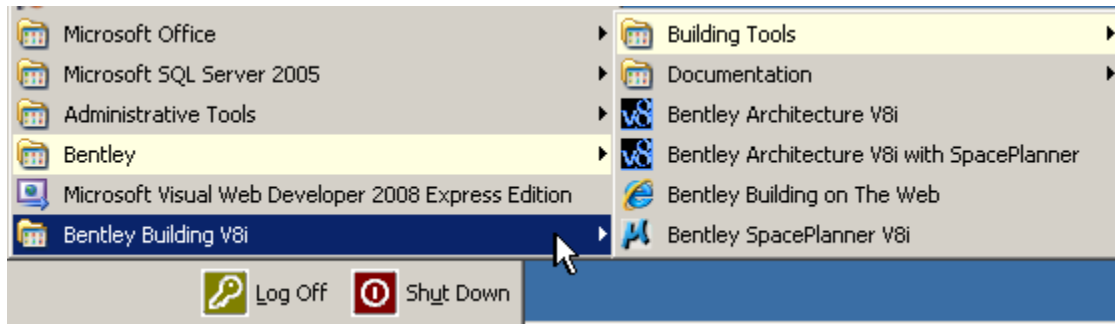


Bentley[®]
Sustaining Infrastructure

Bentley SpacePlanner

What is SpacePlanner?

A set of Space planning functions delivered for both MicroStation and Bentley Architecture use



Bentley SpacePlanner

Differences

MicroStation:

- ❖ SP utilizes an EC schema
- ❖ Provides 3D spaces capabilities
- ❖ Has tools to place cells with EC data on them

Bentley Architecture:

- ❖ SP utilizes the DG schema
- ❖ Creates true BA "Spaces"
- ❖ Limited to 2D BA "Spaces"

Bentley Facilities:

- ❖ The Briefcase import/export tools allow to export the Facilities schema as an EC schema
- ❖ If this EC schema is used with SpacePlanner, the SpacePlanner plans can get imported into Facilities
- ❖ Asset Catalogs are supported too!

Bentley SpacePlanner

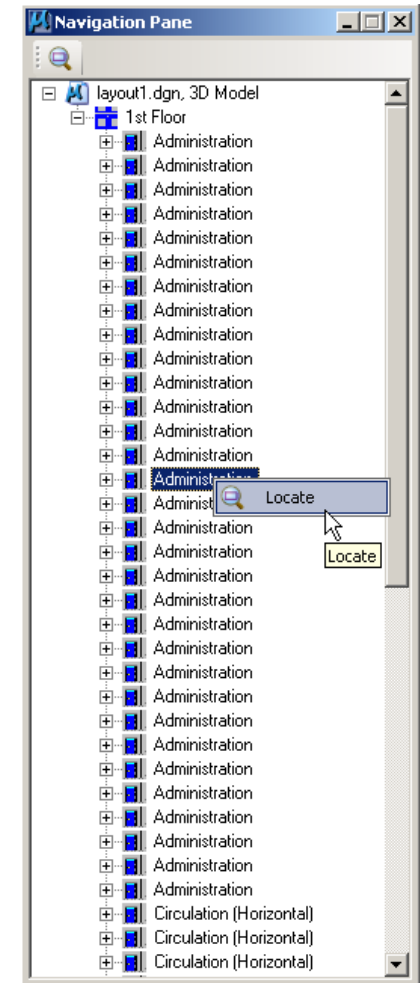
SpacePlanner functionality

- ❖ Navigation
- ❖ Properties panel
- ❖ Thematic Maps
- ❖ Search
- ❖ Space Planning dialog
- ❖ Create Space commands
- ❖ Reports
- ❖ Labeling
- ❖ Schema configuration

Bentley SpacePlanner

Navigation

- ❖ Dynamic hierarchy tree from graphics
- ❖ Supports reference files
- ❖ Locate of objects
- ❖ Highlight and select both ways (tree graphics)



Bentley SpacePlanner

Properties

- ❖ Supports DG and EC content
- ❖ Multi select and edits reference files
- ❖ Picklists
- ❖ Supports Read only values



Miscellaneous	
West Wall Finish	Vinyl
Ceiling Finish	**Varies**
West Base Finish	Rubber
South Base Finish	Rubber
South Wall Finish	Vinyl
Floor Finish	Carpet
Department	
Notes	
Floor	
Site	
Building	
East Wall Finish	Vinyl
Ceiling Height	0
Perimeter	**Varies**
Label 2	**Varies**
Label	**Varies**
Number	**Varies**
Program Area	**Varies**
North Wall Finish	Vinyl
East Base Finish	Rubber
North Base Finish	Rubber
Actual Area	**Varies**
Height	**Varies**

Bentley SpacePlanner

Properties panel

- ❖ Supports DG and EC content
- ❖ Multi select and edits reference files
- ❖ Picklists
- ❖ Supports Read only values

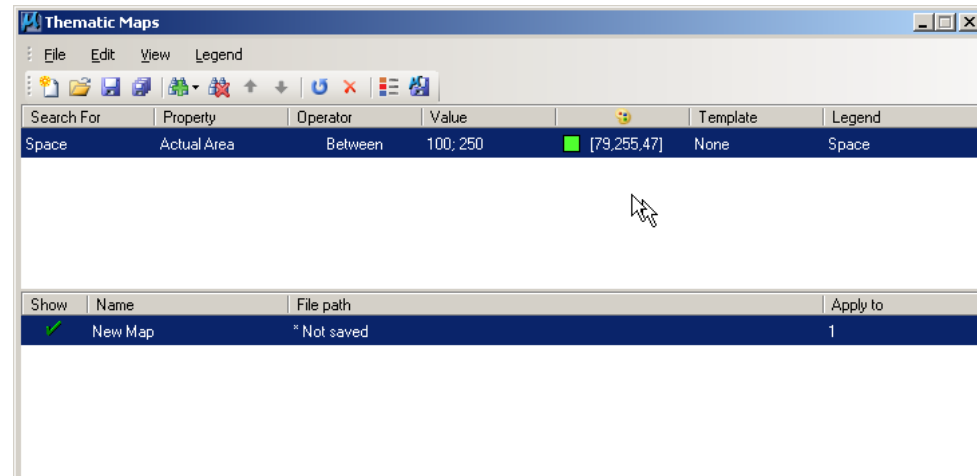


Miscellaneous	
West Wall Finish	Vinyl
Ceiling Finish	**Varies**
West Base Finish	Rubber
South Base Finish	Rubber
South Wall Finish	Vinyl
Floor Finish	Carpet
Department	
Notes	
Floor	
Site	
Building	
East Wall Finish	Vinyl
Ceiling Height	0
Perimeter	**Varies**
Label 2	**Varies**
Label	**Varies**
Number	**Varies**
Program Area	**Varies**
North Wall Finish	Vinyl
East Base Finish	Rubber
North Base Finish	Rubber
Actual Area	**Varies**
Height	**Varies**

Bentley SpacePlanner

Thematic maps

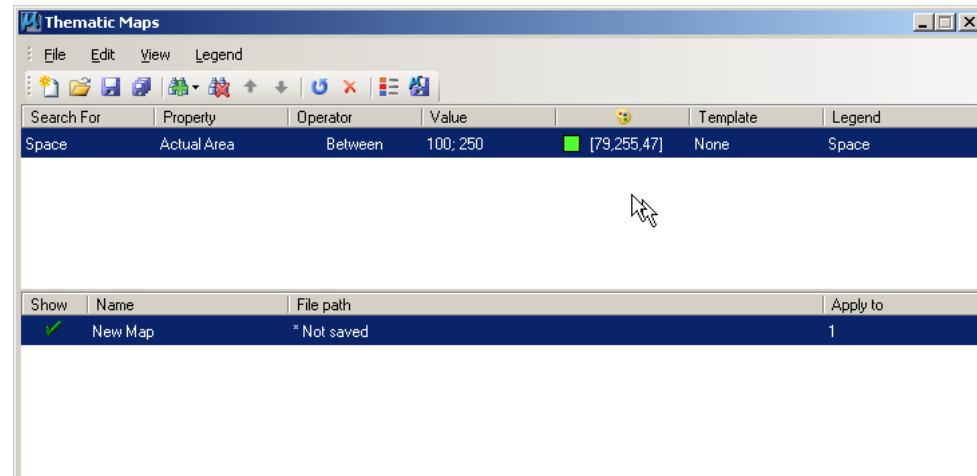
- Render any view based on search criteria
- Create legends
- Save maps permanently to dgn file on separate layer
- Save and open map definitions
- Use multiple maps/searches



Bentley SpacePlanner

Thematic maps

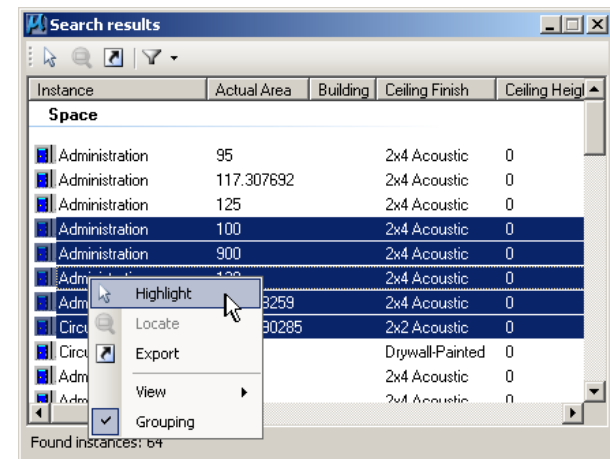
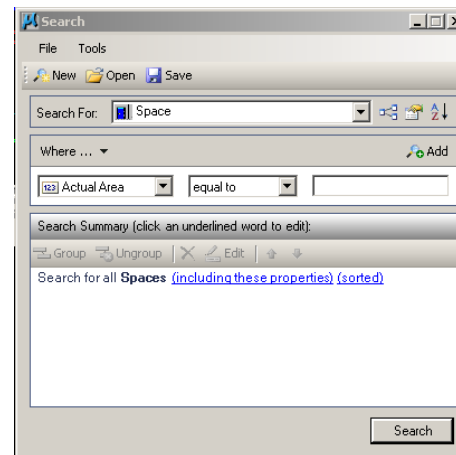
- Render any view based on search criteria
- Create legends
- Save maps permanently to dgn file on separate layer
- Save and open map definitions
- Use multiple maps/searches



Bentley SpacePlanner

Search

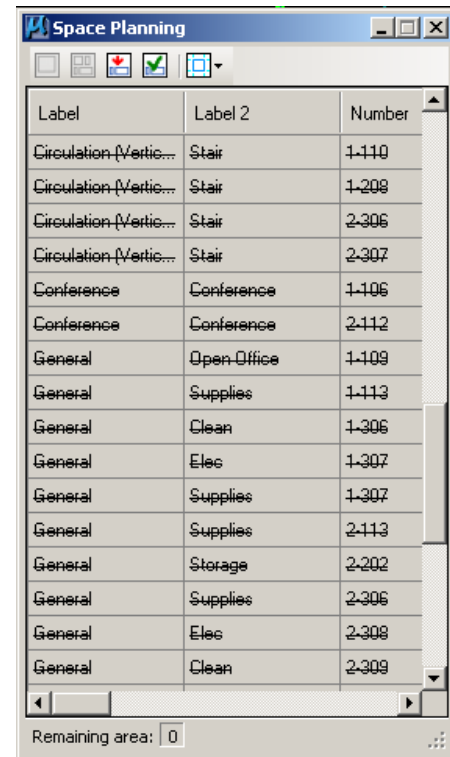
- Search for any DG catalog item or EC class
- Highlight and locate search results
- Copy search results to clipboard



Bentley SpacePlanner

Space Planning dialog

- Import program space lists
- Place single or multiple spaces
- Place 2D or 3D spaces
- Make any existing 2D shape or 3D volume a space of any kind



The screenshot shows the 'Space Planning' dialog box with a table of space data. The table has three columns: 'Label', 'Label 2', and 'Number'. The data is as follows:

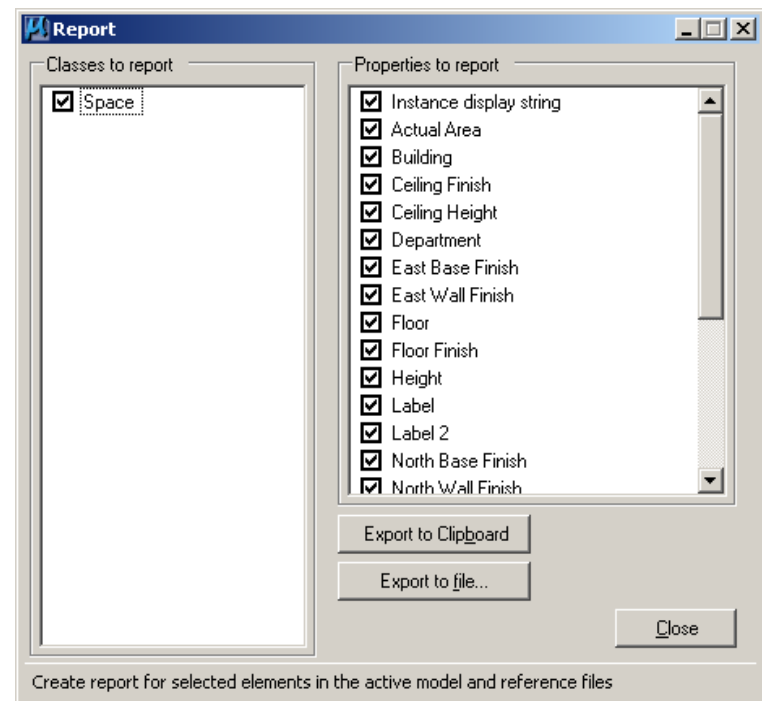
Label	Label 2	Number
Circulation (Vertic...	Stair	1-110
Circulation (Vertic...	Stair	1-208
Circulation (Vertic...	Stair	2-306
Circulation (Vertic...	Stair	2-307
Conference	Conference	1-106
Conference	Conference	2-112
General	Open Office	1-109
General	Supplies	1-113
General	Clean	1-306
General	Elec	1-307
General	Supplies	1-307
General	Supplies	2-113
General	Storage	2-202
General	Supplies	2-306
General	Elec	2-308
General	Clean	2-309

At the bottom of the dialog, there is a 'Remaining area:' field with the value '0'.

Bentley SpacePlanner

Reports

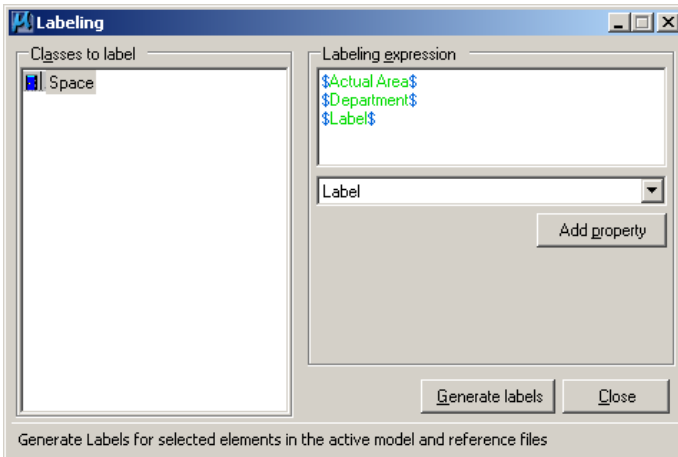
- Simple reports on objects in design file (and references)



Bentley SpacePlanner

Labeling

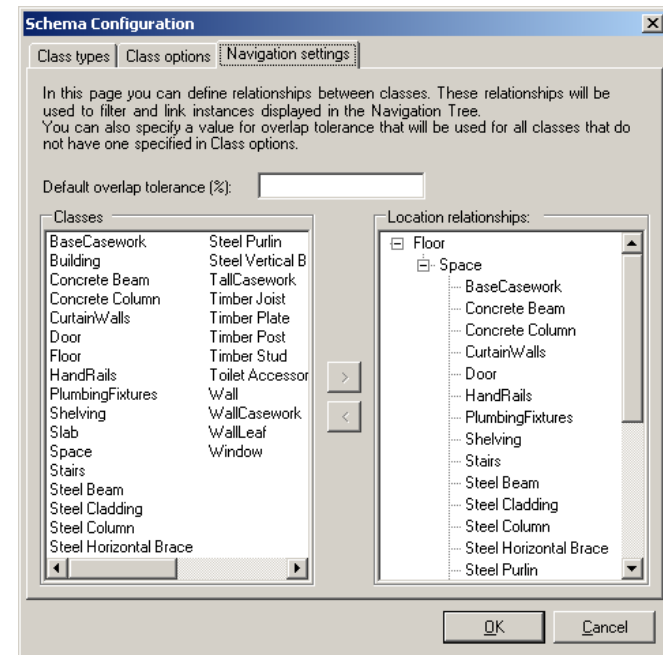
- Create MicroStation text fields for all spaces or other DG/EC objects in the active file
- Supports fence and selection sets



Bentley SpacePlanner

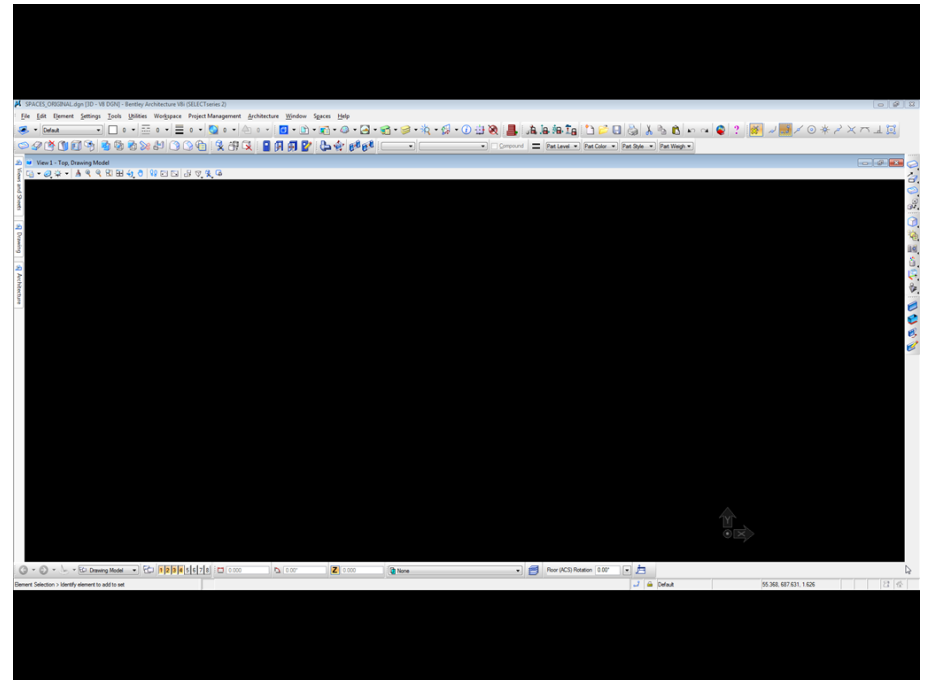
Schema configuration

- Define which schema objects are treated as spaces or (point) assets
- Define hierarchies
- Define display labels



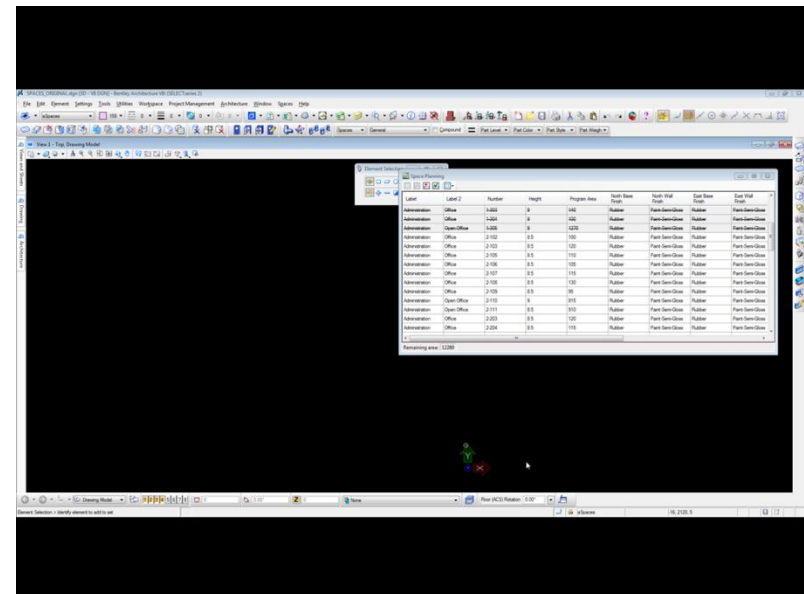
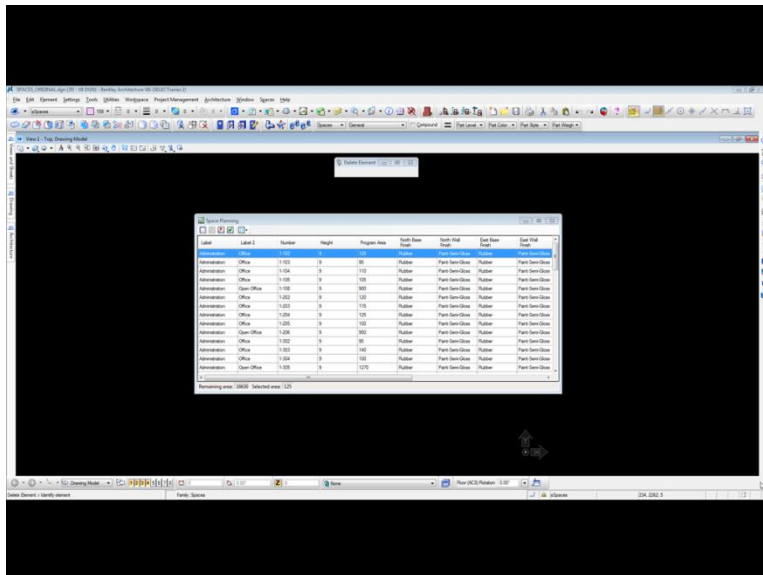
Bentley SpacePlanner

Import text file

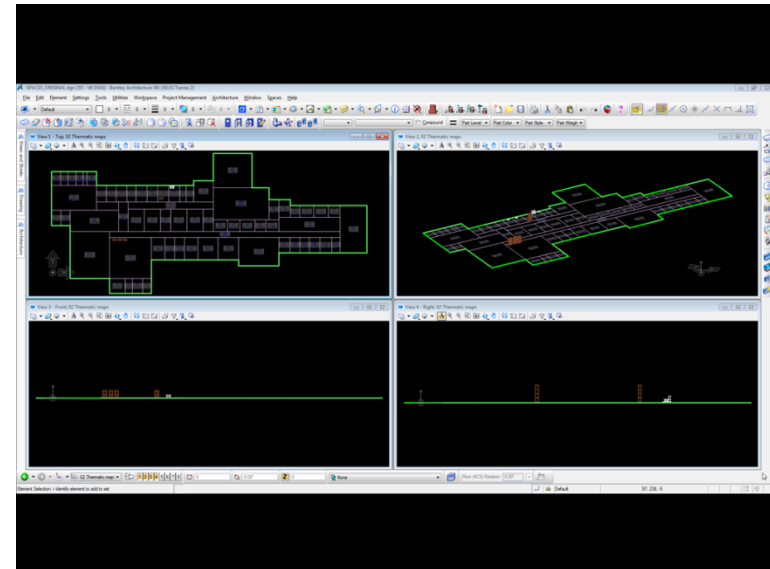


Bentley SpacePlanner

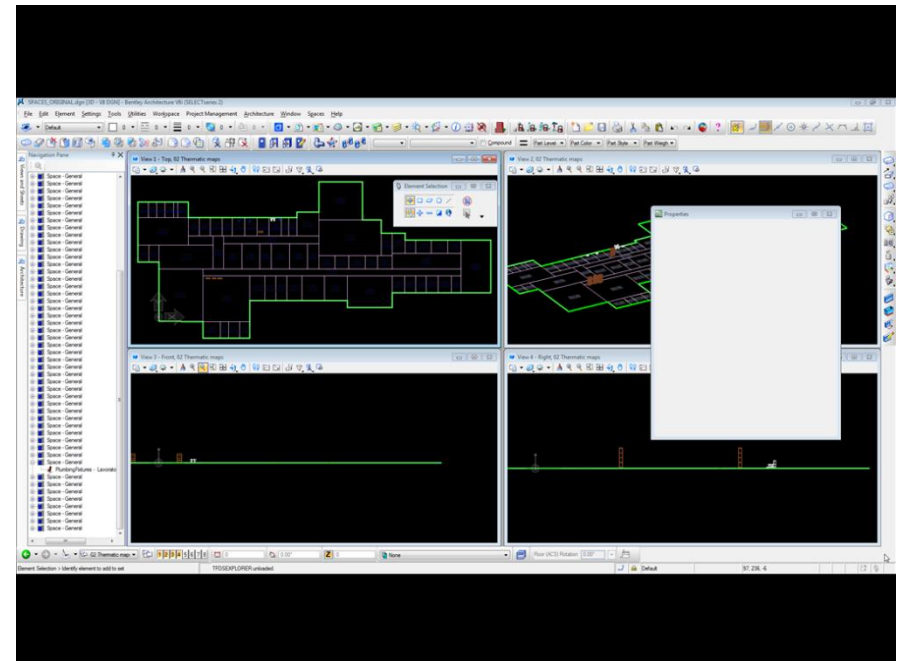
Place space



Bentley SpacePlanner Properties

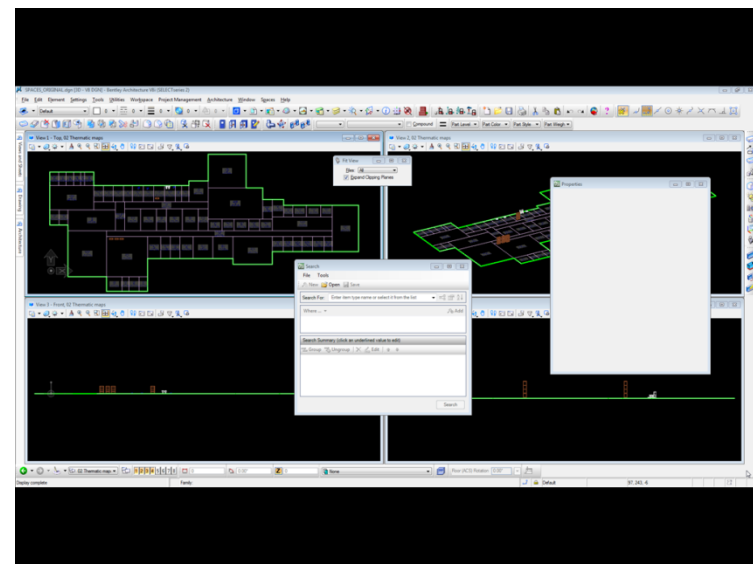
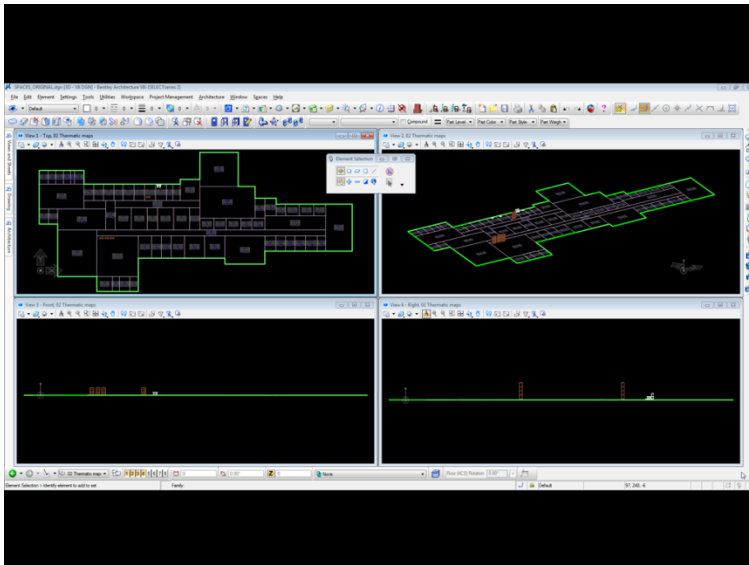


Bentley SpacePlanner Navigation



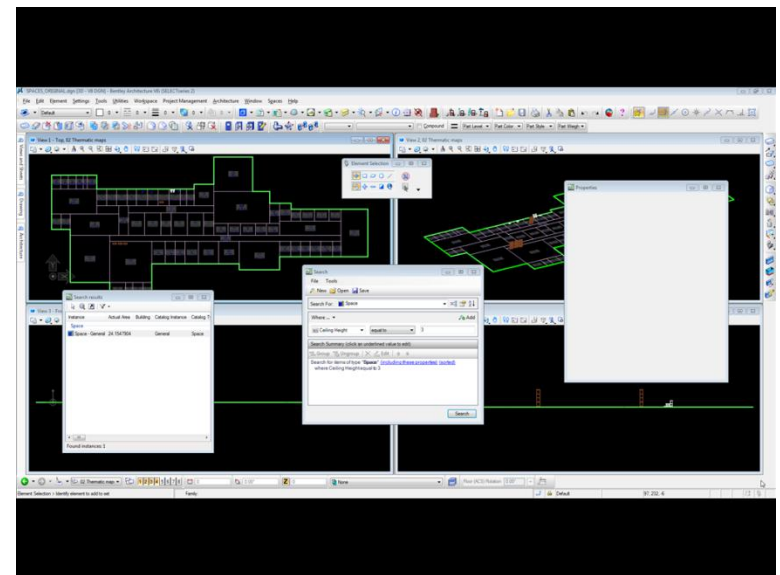
Bentley SpacePlanner

Search - Advanced search



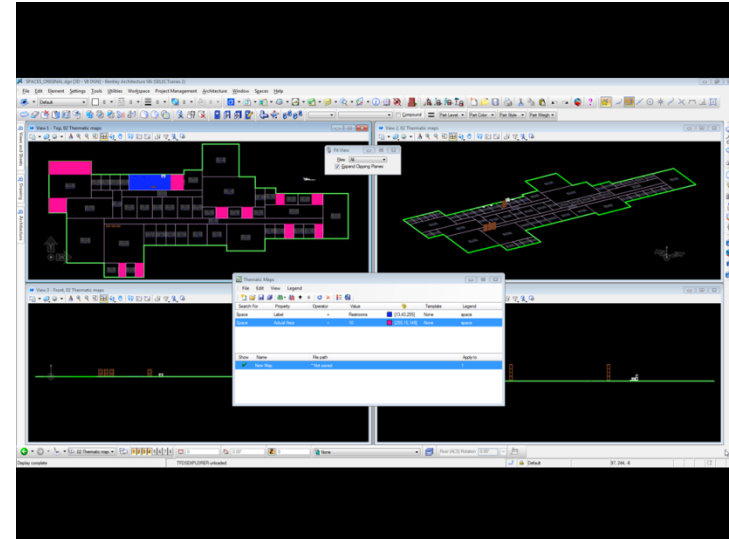
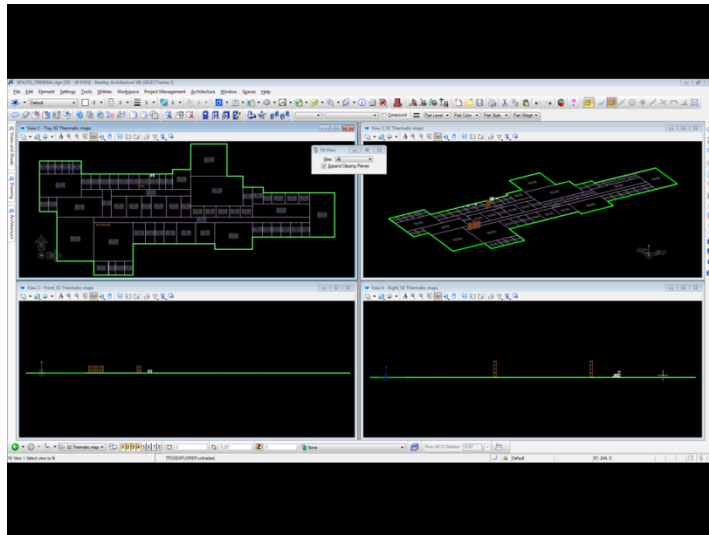
Bentley SpacePlanner

Locate



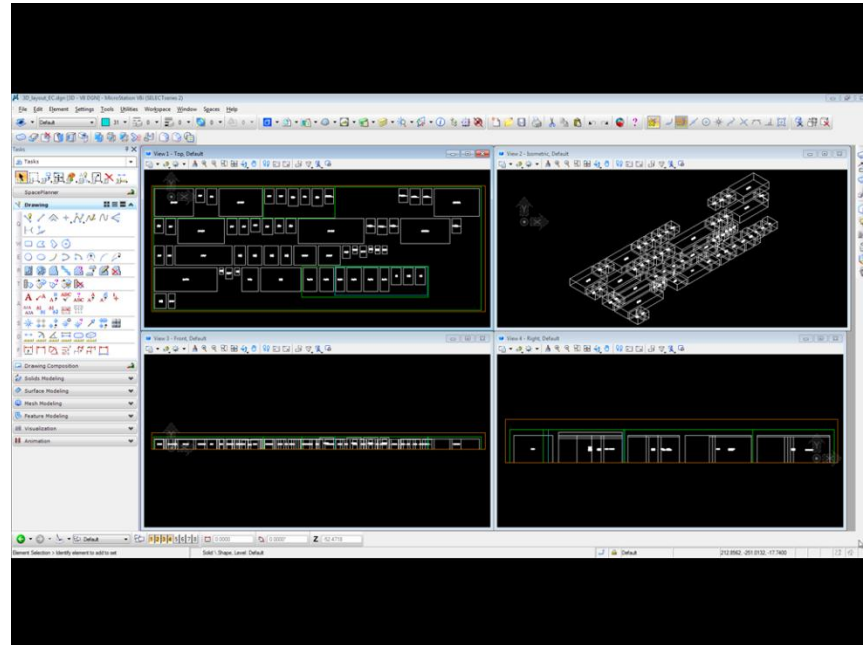
Bentley SpacePlanner

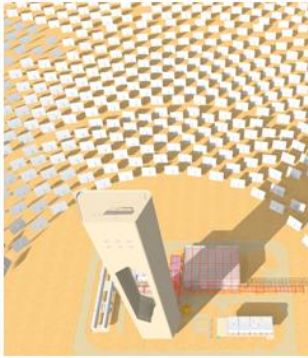
Thematic maps



Bentley SpacePlanner

Microstation space planner





Thank you!