



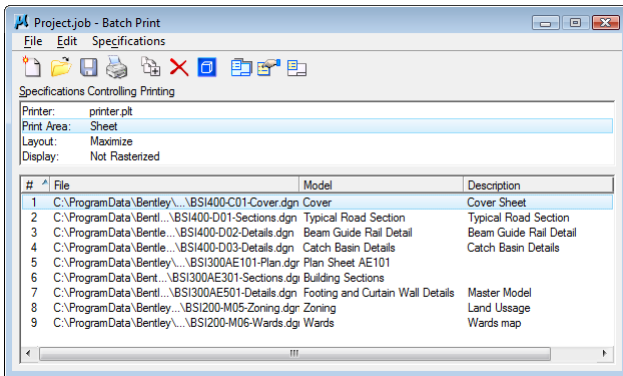
Exploring MicroStation V8i Printing

Jo Terri Wright
Product Manager – Collaboration Products

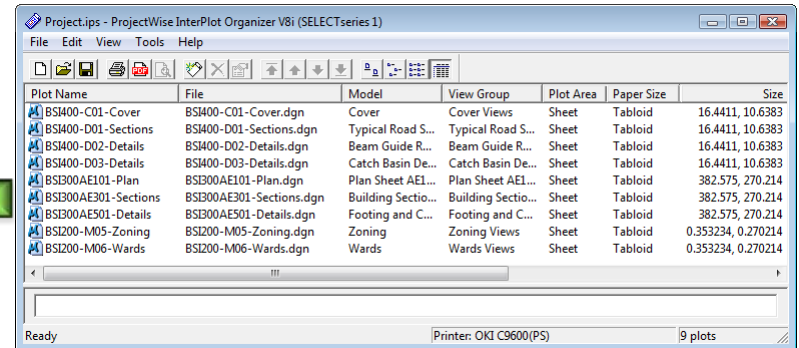
Agenda

- Unification of Bentley Print clients
- Print Organizer Features
- Common Print Features
- SELECTseries Enhancements

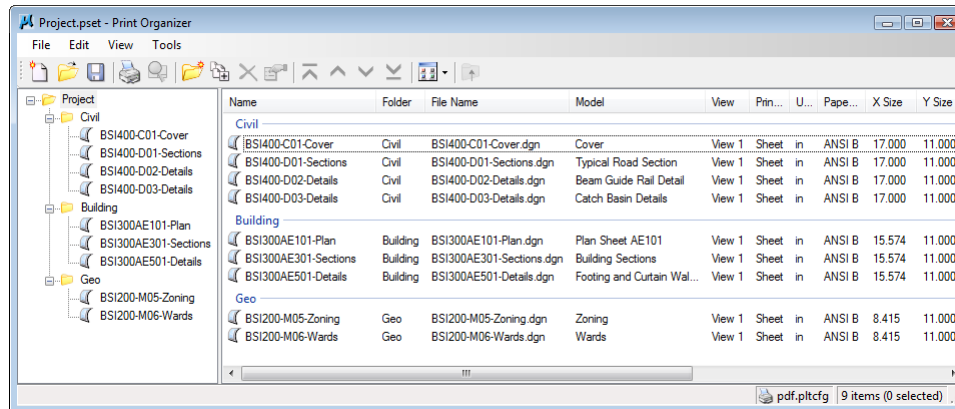
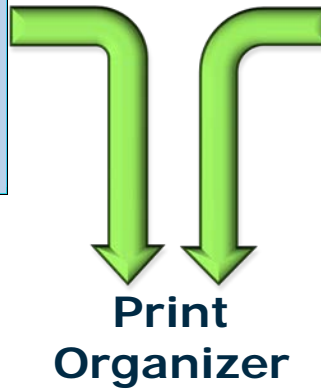
Unification Bentley Print clients



Batch Print



ProjectWise InterPlot Organizer

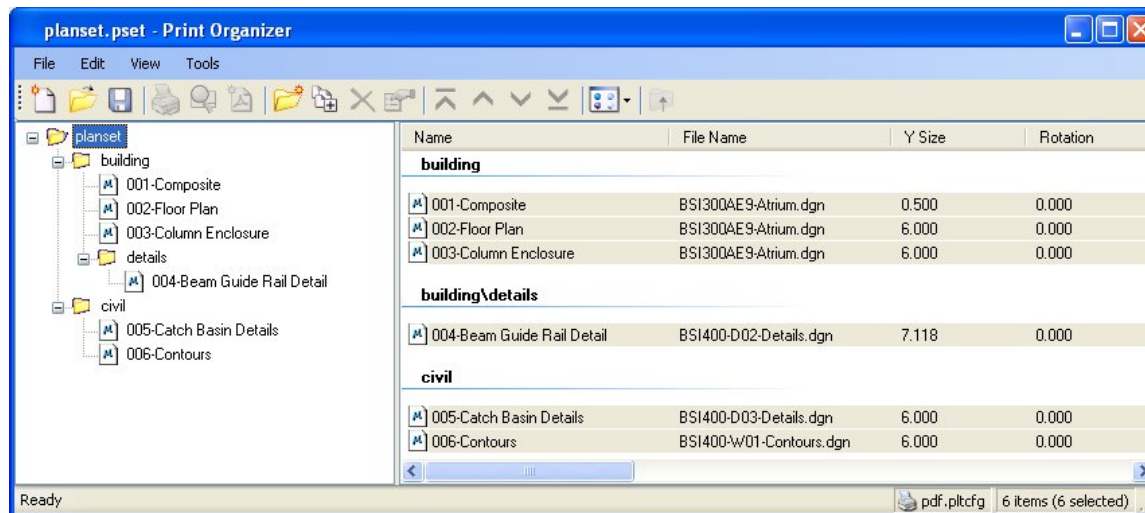


Print Organizer Features

- Hierarchical Organized Print Sets
- Individual Print Definition Settings
- Print Definition Multi-Edit
- In-Place Print Definition and Set Composition
- Print Set File (PSET)
- Drag and Drop
- Project Explorer Integration
- Named Expressions Support
- PDF Output with Hierarchical Bookmarks
- Print Definition Files

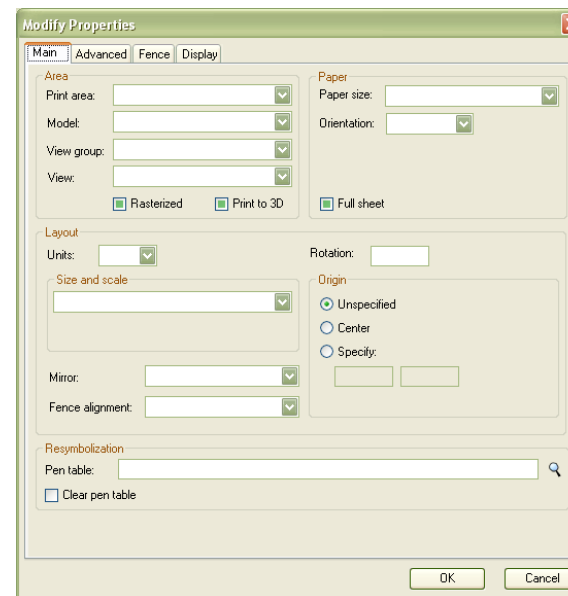
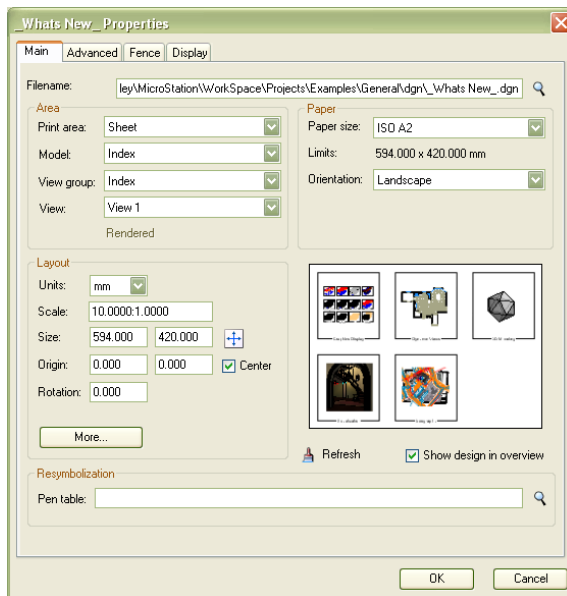
Print Organizer

- Hierarchical Organized Print Sets
 - Collection of print definitions and folders.
 - Print definitions can be organized inside folders, with intermingled sub-folders and print definitions inside each folder.



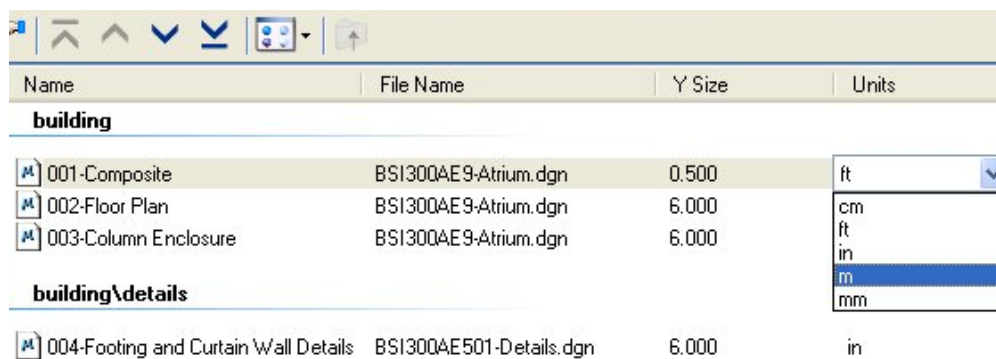
Print Organizer

- Individual Print Definition Settings
 - Individually set print preferences per item
- Print Definition Multi-Edit
 - Edit the properties of individual or groups of print definitions



Print Organizer

- Set Composition
 - Drag and Drop design files
 - Supports dropping into existing folders
- In-Place Print Definition
 - Edit individual definitions for one or more print definitions in the right pane
- Print Set File (PSET)

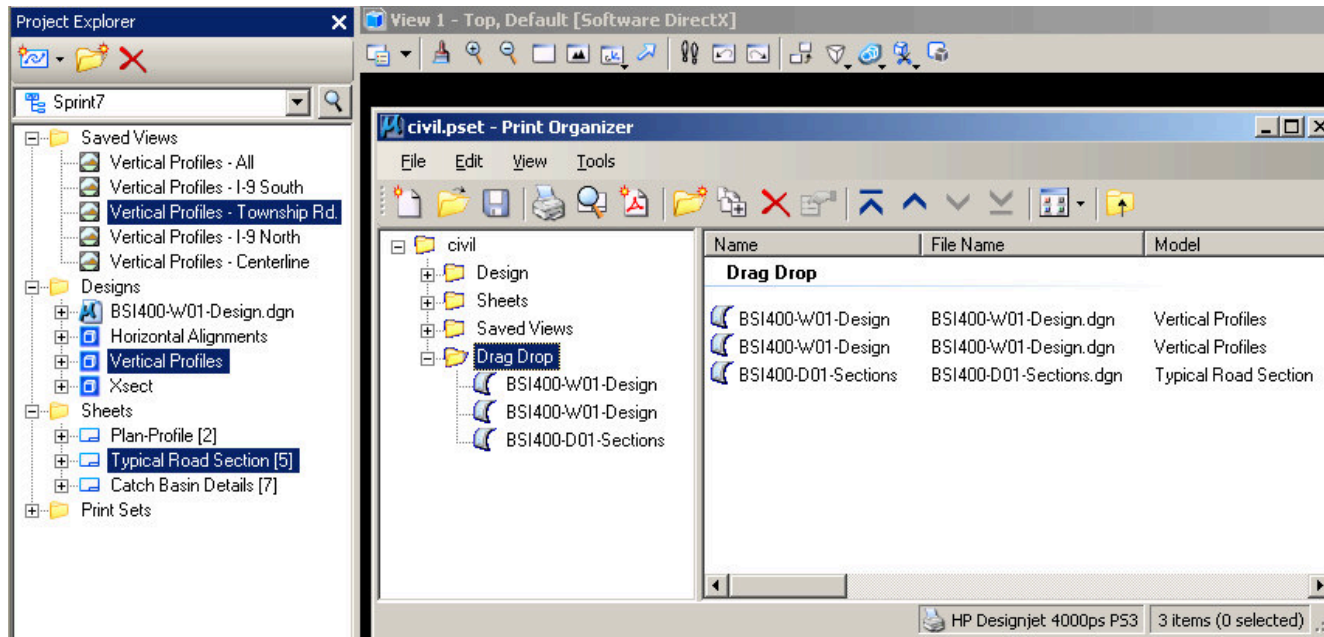


The screenshot shows the Print Organizer interface with a table of print definitions. The table has four columns: Name, File Name, Y Size, and Units. The 'Units' column for the first three rows has a dropdown menu open, showing options: cm, ft, in, m (highlighted), and mm.

Name	File Name	Y Size	Units
building			
001-Composite	BS1300AE9-Atrium.dgn	0.500	ft
002-Floor Plan	BS1300AE9-Atrium.dgn	6.000	cm
003-Column Enclosure	BS1300AE9-Atrium.dgn	6.000	ft
building\details			
004-Footing and Curtain Wall Details	BS1300AE501-Details.dgn	6.000	in

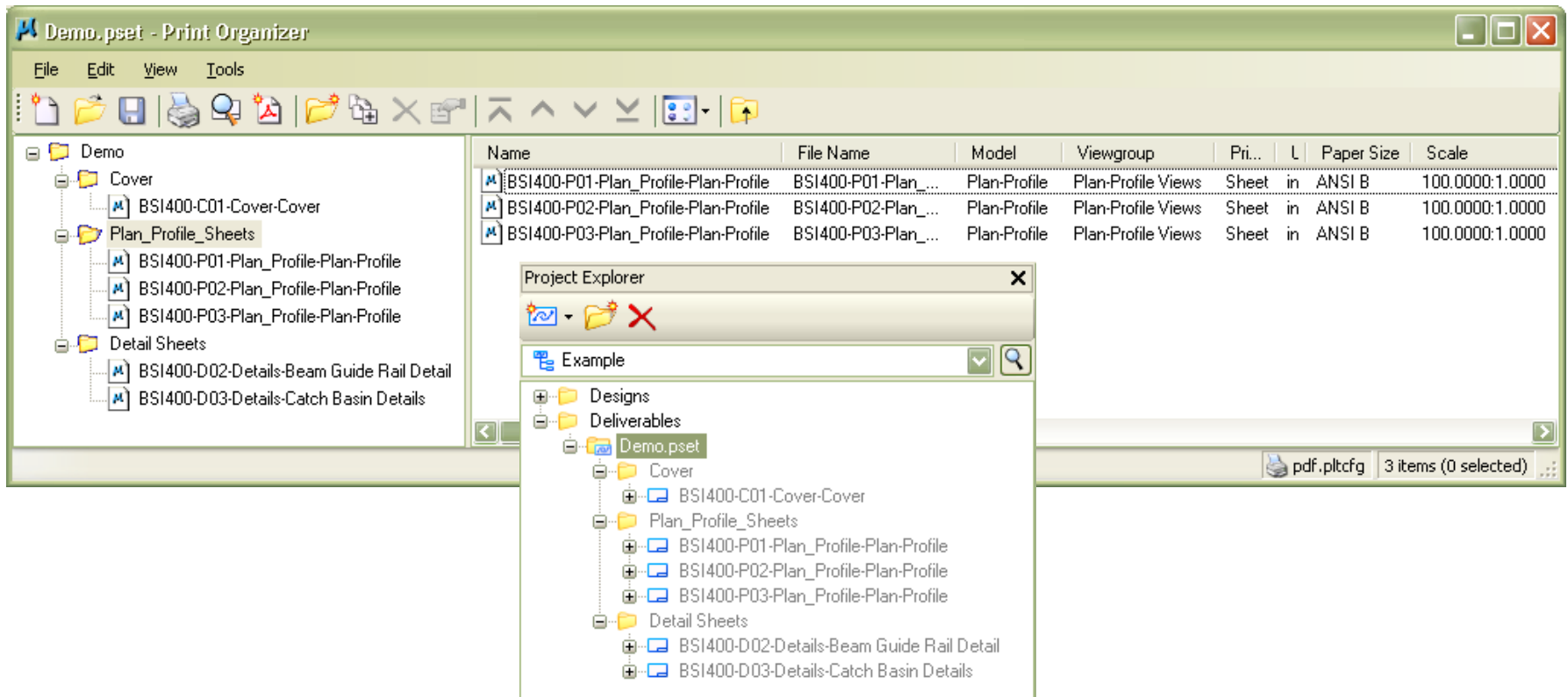
Print Organizer

- Drag and Drop to Print Organizer from:
 - File Explorer
 - Project Explorer
 - Models Dialog



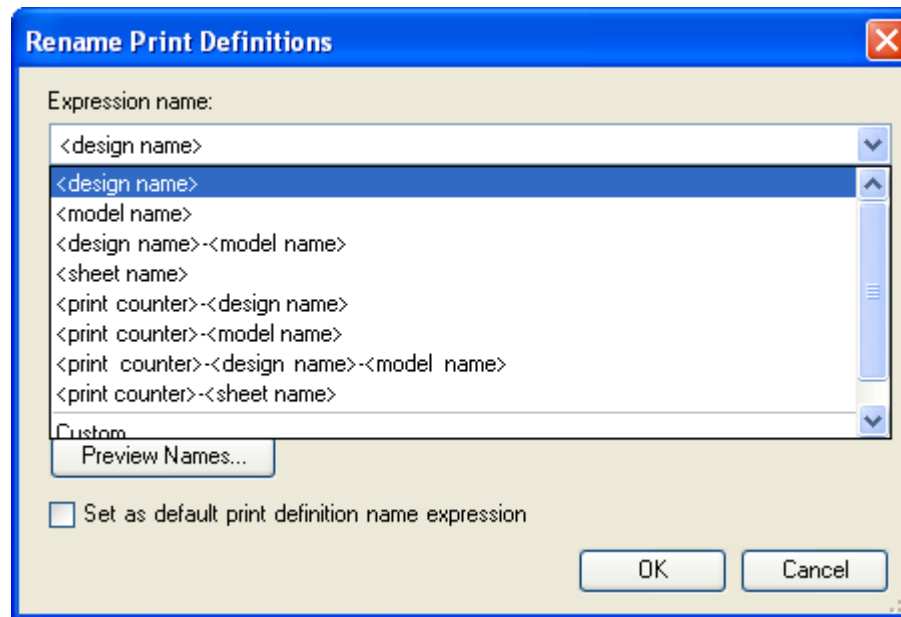
Print Organizer

- Project Explorer Integration
 - Open Print Sets from Project Explorer



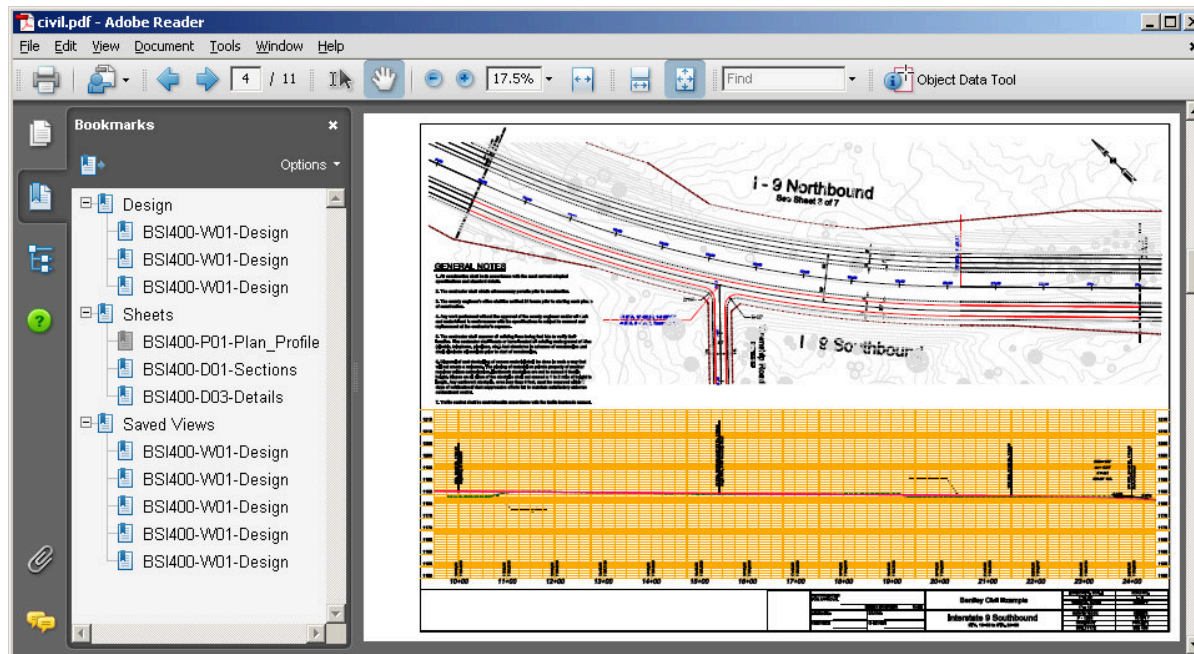
Print Organizer

- Named Expressions Support
 - Used for print definition and output file names



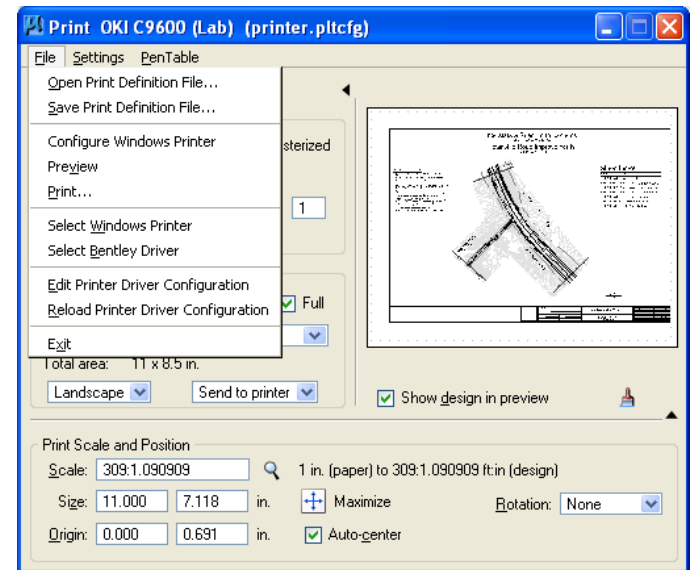
Print Organizer

- PDF Output with Hierarchical Bookmarks
 - Preserve the hierarchy defined in the originating print set
 - Enable via Enable Bookmark Hierarchy in the PDF printer driver configuration property



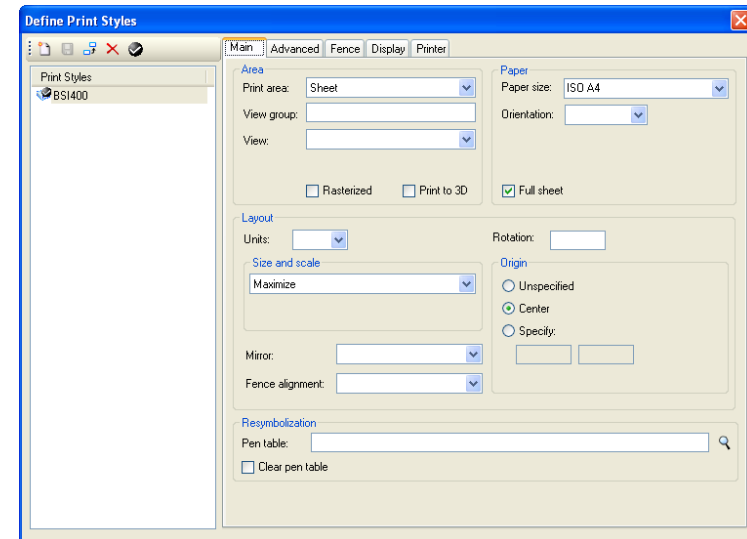
Common Printing Features

- Print Definition Files
 - Open Print Definition File
 - Opens Print Definition files, either .pset or .ini
 - Save Print Definition File
 - Saves Print Definition Files only as .pset files
 - These .pset files can be opened in Print Organizer



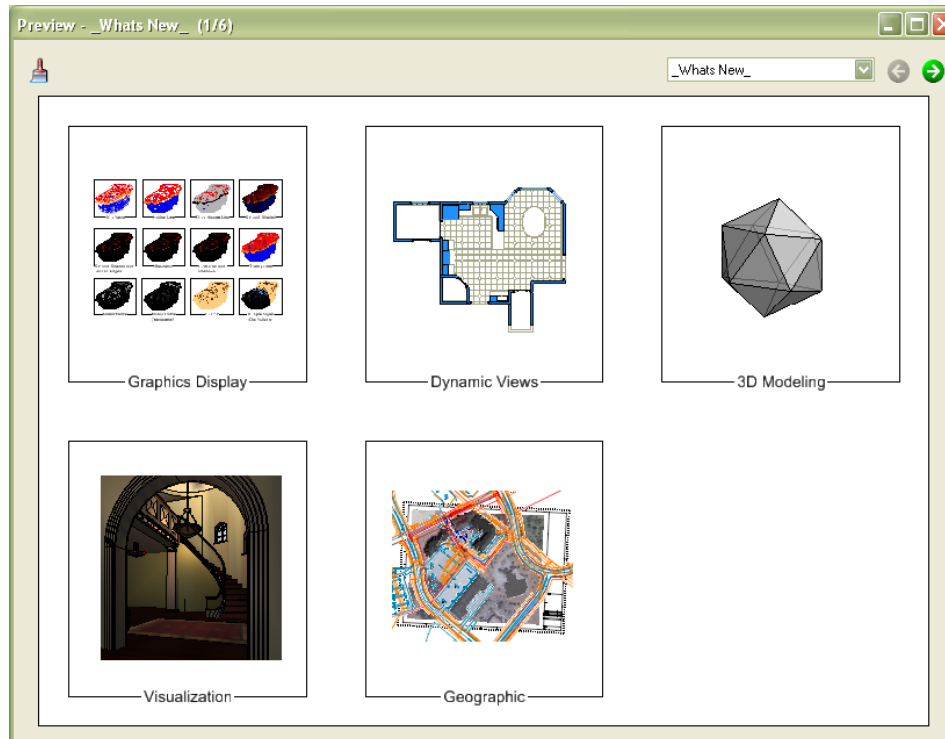
Common Printing Features

- Print Styles
 - Common to Print Organizer and the Print dialog
 - Allows you to define and reuse named collections of print definition properties
 - Stored in the open DGN file or in the configured DGN libraries
 - Can associate a Print Style with a printer driver configuration file
 - Default Print Styles are automatically applied



Common Printing Features

- Print Preview
 - Thumbnail preview on Properties Dialog
 - Preview in resizable window

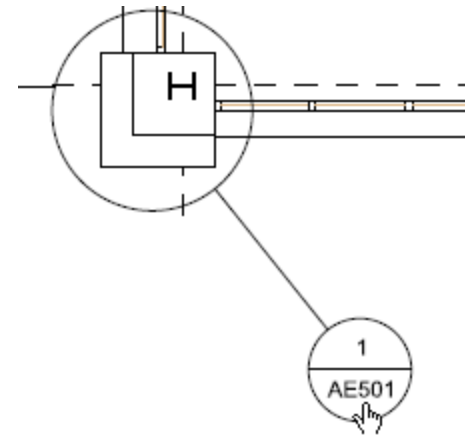


MicroStation Printing SELECTseries Enhancements

- PDF links
- Geospatial PDF
- ProjectWise managed workspaces
- PDF property publishing (w/ ProjectWise InterPlot Organizer)
- PDF Measuring
- Restored HP-GL/2 support for monochrome laser printers
- Improved TrueType text quality in PDF
- Performance improvements for DGNs containing thousands of models

PDF Links

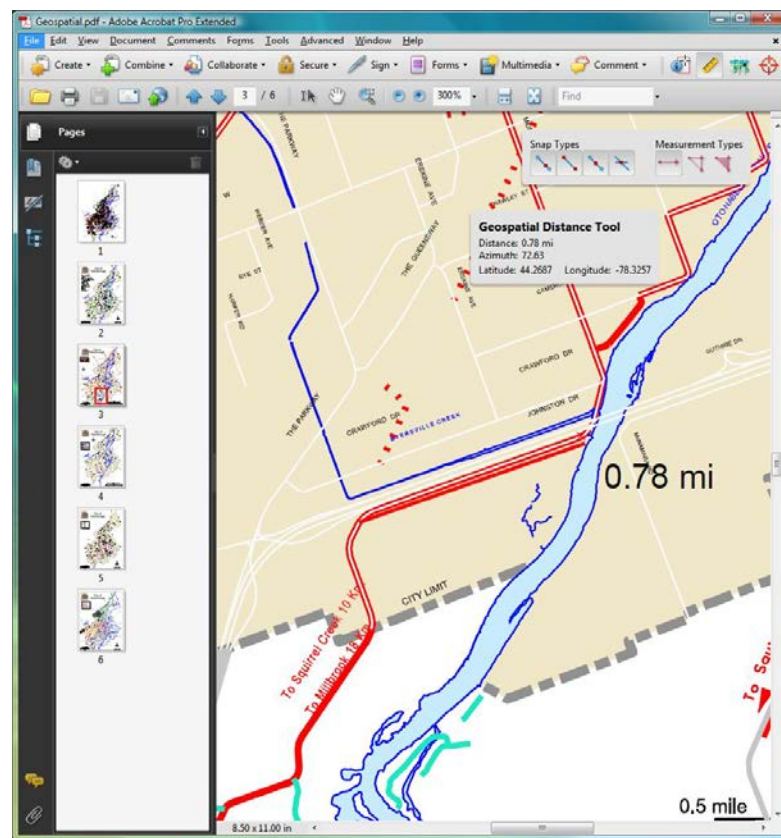
- Engineering Links and links defined in Project Explorer transfer into the output PDF
- Utilize existing links created in MicroStation to make more intelligent PDFs
- Enable links in in the PDF printer driver configuration file
- Just "print" to PDF



TITLE			
Ground Floor Plan			
PROJECT FILE REF:			
DESIGN FILE REF:			
DATE:		SCALES: 1:100	
DRAWN BY:	JOB NO.	DRG. NO.	REV.
APPROVED BY:	BSI300	AE101	1.0
www.Bentley.com			

Geospatial PDF

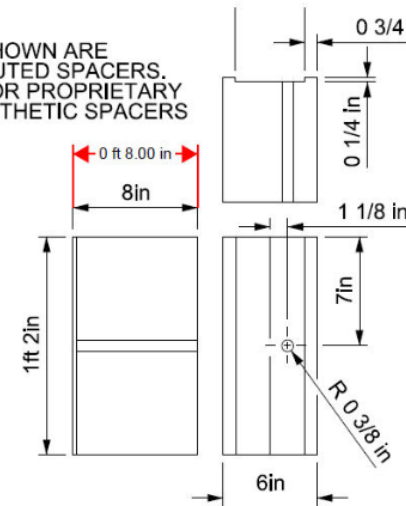
- Multiple areas per sheet & set
- View coordinates in appropriate projection
- Measure in real world units
- Comment and place markers for follow-up
- Enable georeferencing in the PDF printer driver configuration file
- Just “print” to PDF



PDF Measuring

- Allows measuring in model space within a PDF document
- Retain the model units for measuring distance and area for both the Master as well as Reference files
- Enable measuring in in the PDF printer driver configuration file
- Just "print" to PDF

Note:
DIMENSIONS SHOWN ARE
FOR WOOD ROUTED SPACERS.
DIMENSIONS FOR PROPRIETARY
RECYCLED/SYNTHETIC SPACERS
MAY VARY.

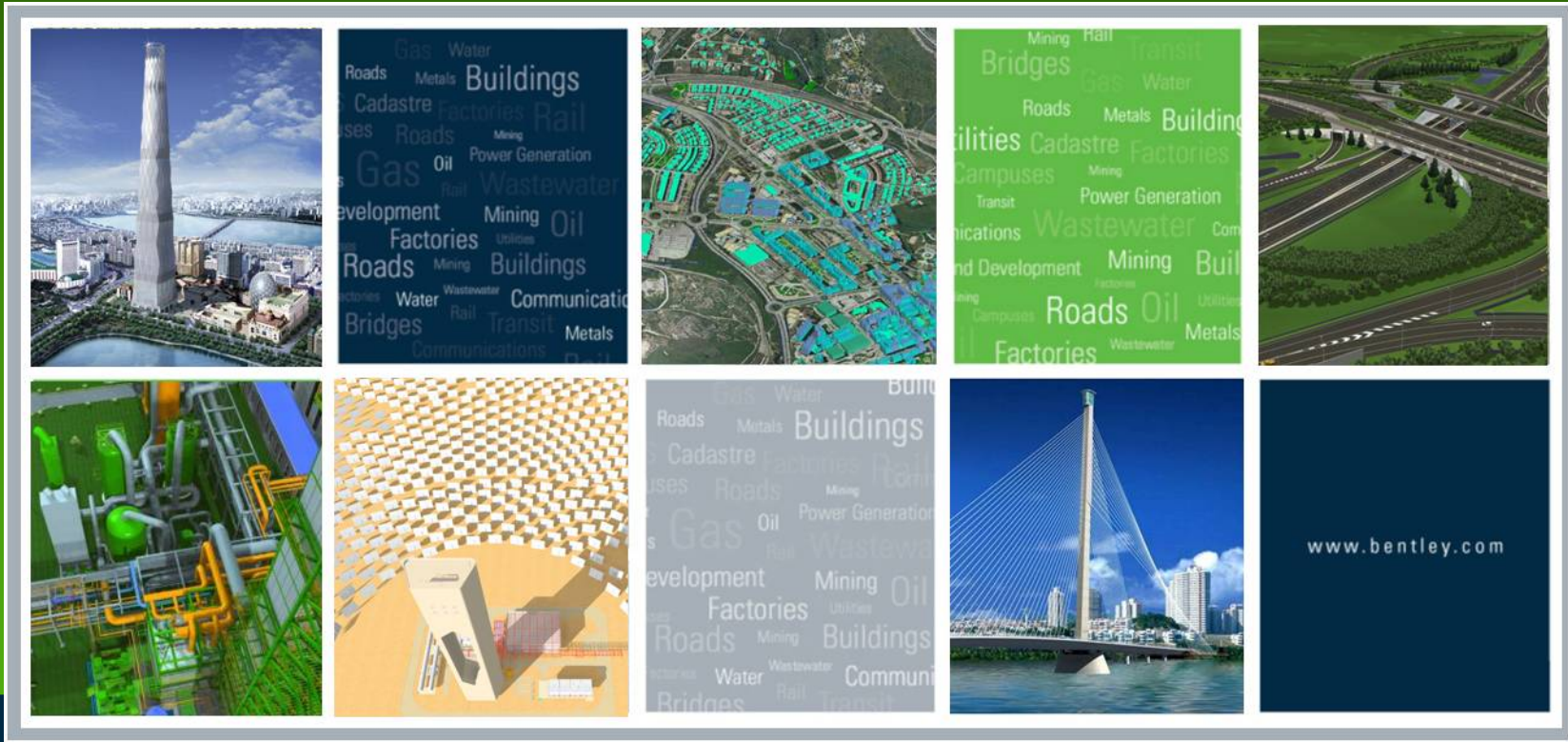


WOOD OR APPROVED RECYCLED/
SYNTHETIC MATERIALS

14in Routed
1 1/2

Distance Tool
Distance: 0 ft 8.00 in
Angle: 0.00
 ΔX : 0 ft 8.00 in ΔY : 0 ft
Embedded Scale Ratio: (in X) 1 in = 0.66670 ft; (in Y) 1 in = 0.66672 ft

Questions



MicroStation Printing Update

Jo Terri Wright
Product Manager – Collaboration Products