



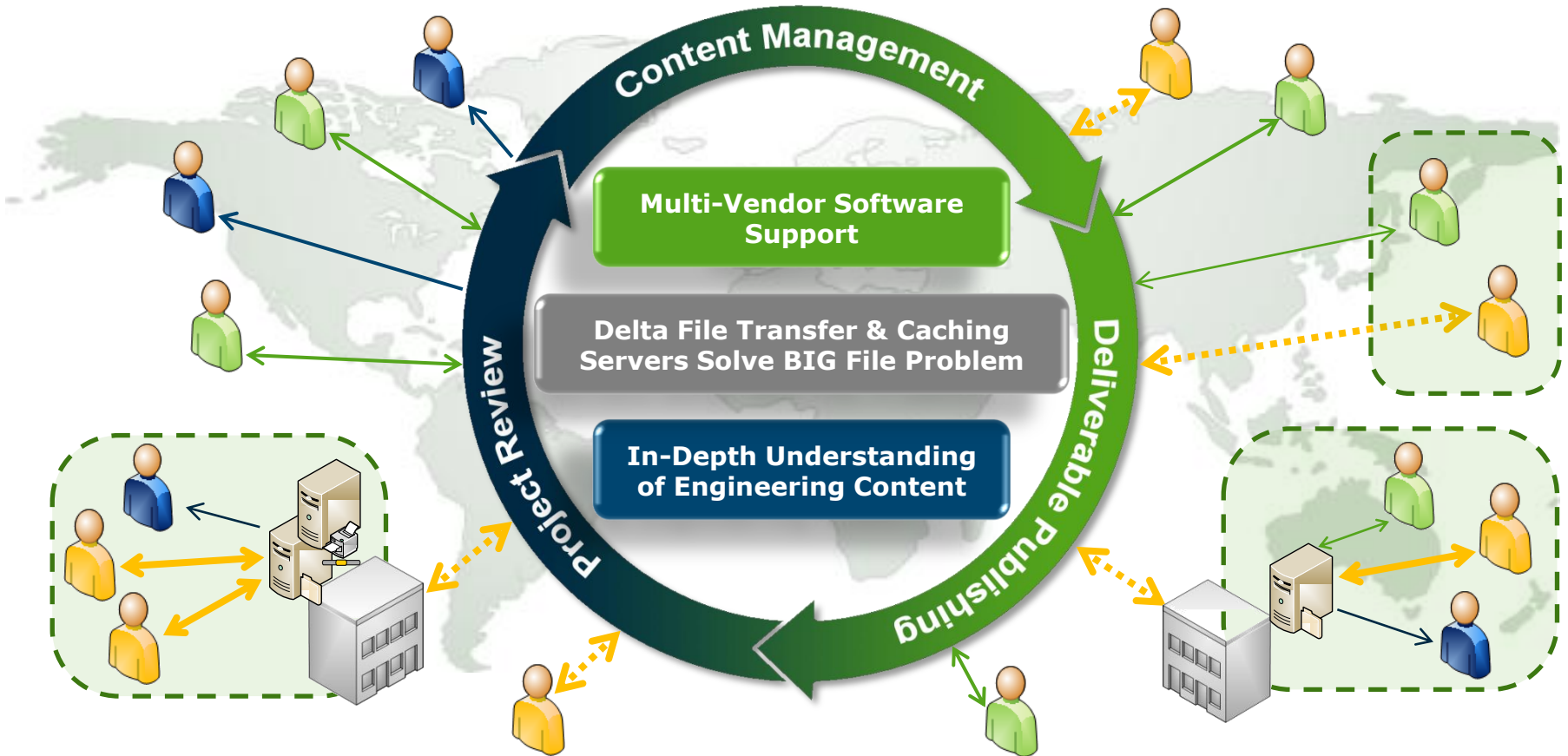
ProjectWise Extended

Rimantas Varanavicius
Product manager , ProjectWise Integration Server

Agenda

- CAD application integrations
- Revit application integration
- ProjectWise role in Dynamic Review processes
- ProjectWise and GIS solutions
- Integration with generic DMSs and other enterprise solutions

ProjectWise is a Project Team Collaboration Platform for the Design and Construction of Capital Projects



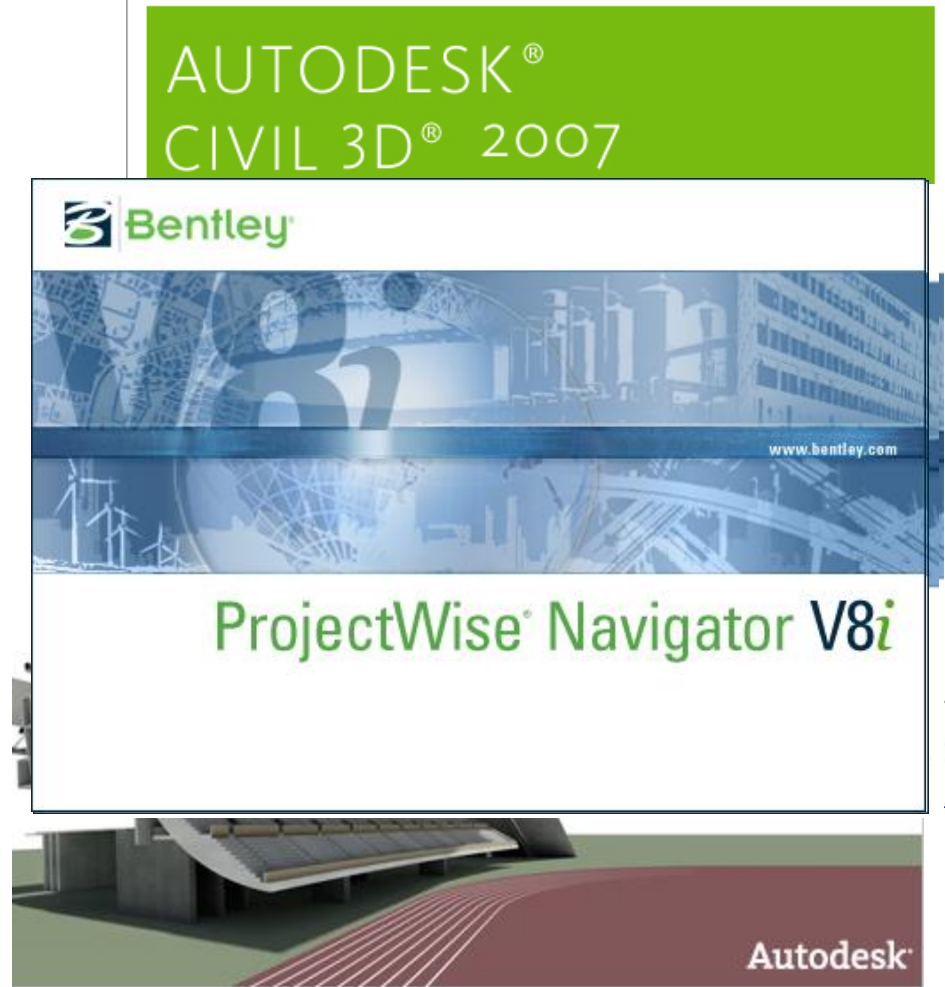
Bentley
ProjectWise V8i

Engineering Project Collaboration Platform

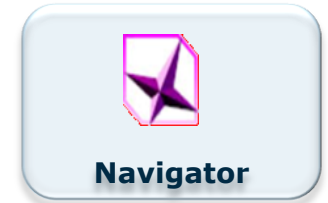
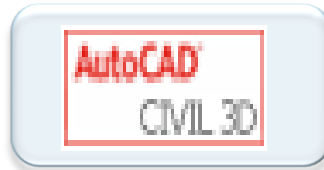
CAD application integration

Design Projects Challenges

- AEC projects typically involve multiple software applications
- Important to pick the right tool for each aspect of the project
- Often deliverable formats are contractually mandated



ProjectWise V8i – New and Improved Application Integration



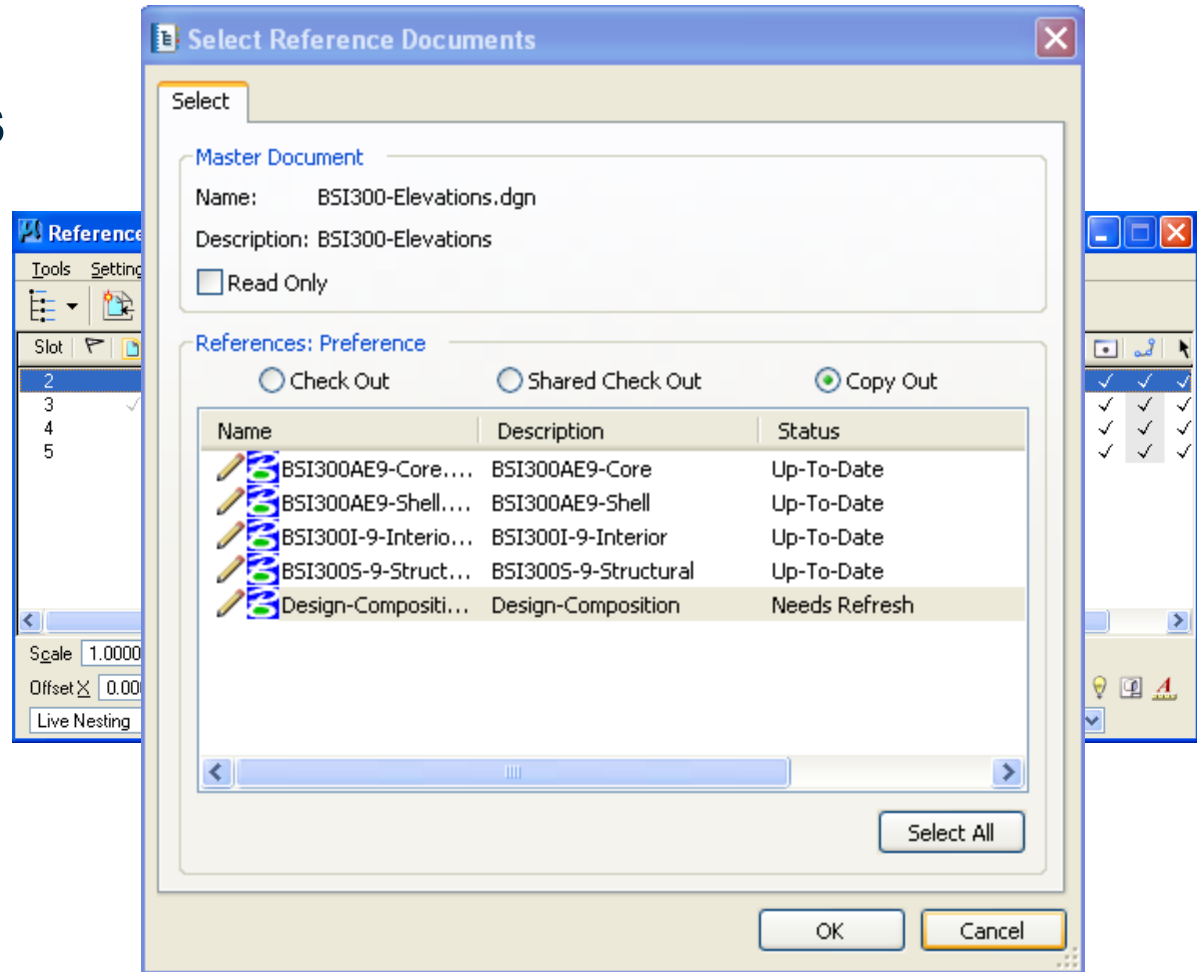
ProjectWise-CAD Integration Capabilities

ProjectWise integrates with MicroStation and AutoCAD and provides the following capabilities:

- Reference file management
- Titleblock content synchronization
- File open dialog integration
- Deliverable Management
- Workspace control and management
- Automated\Batch processing
- Industry-specific product integration

Automated Reference File Access

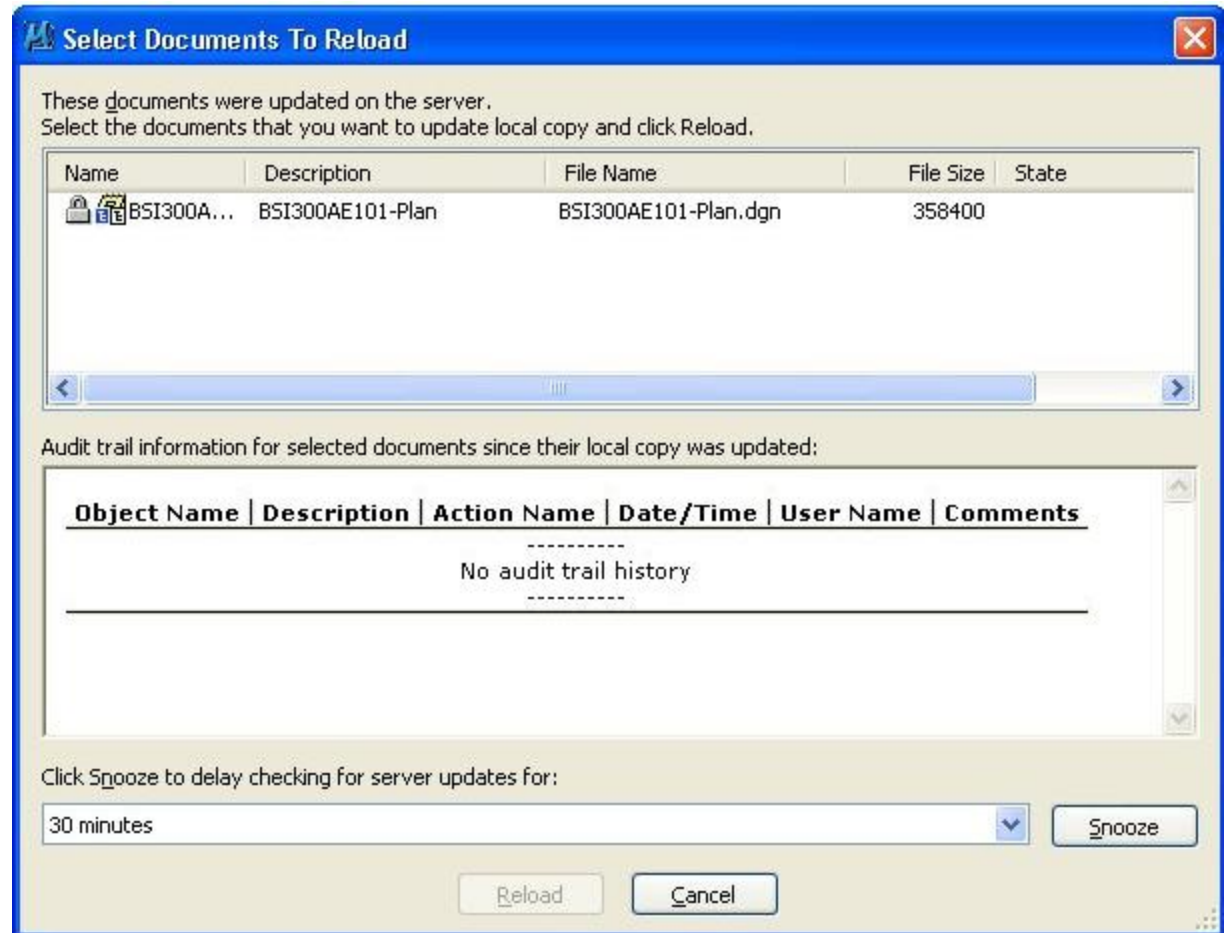
- Automatically gets all the reference files when a master file is checked out
- Ensures that the design environment is always up-to-date
- Maintaining accuracy, integrity and quality of CAD deliverables



Maintaining Reference Set Integrity



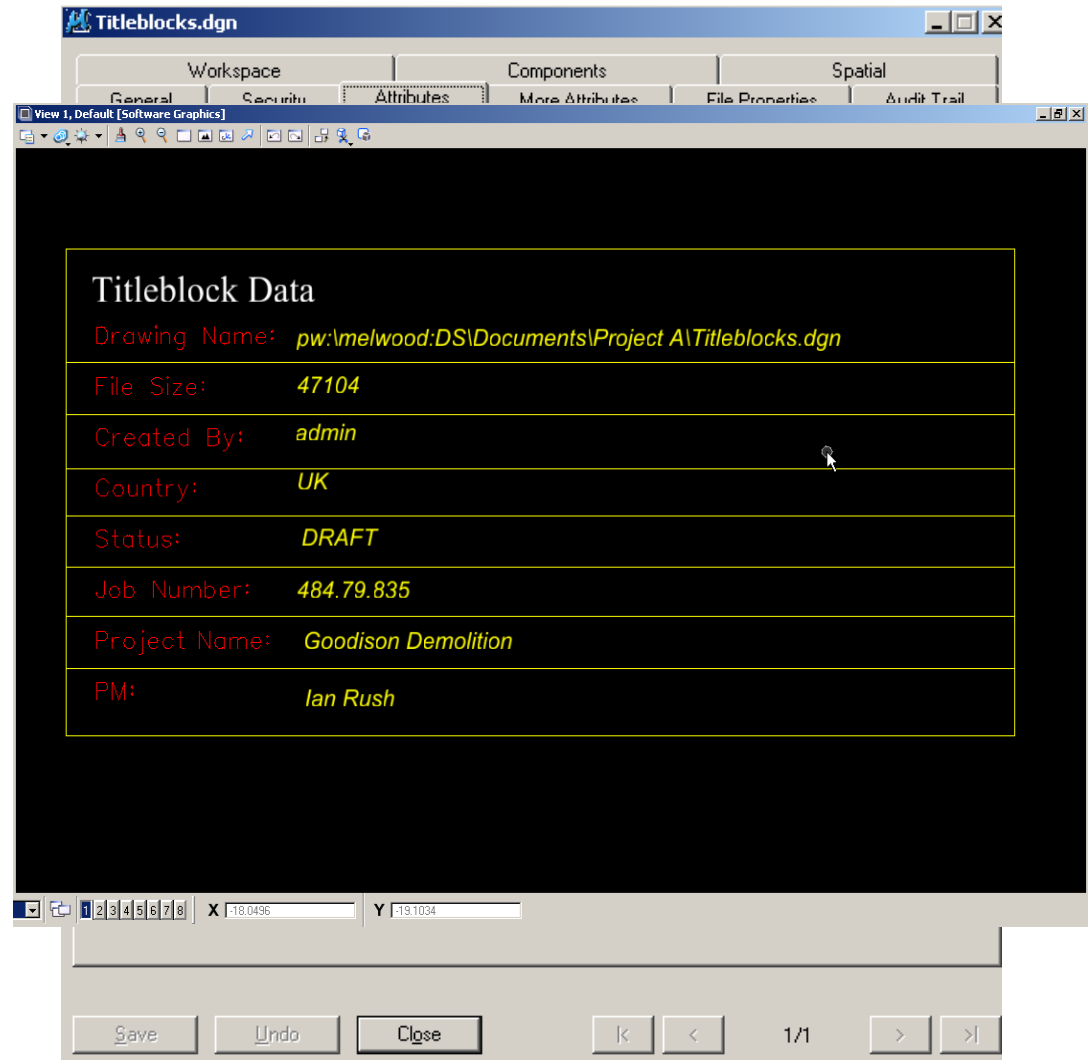
- Automatically heals broken reference links and checks for changes to references during CAD session
- Ensures that all reference paths are maintained even if files are renamed or moved by other users



Titleblock Content Synchronization



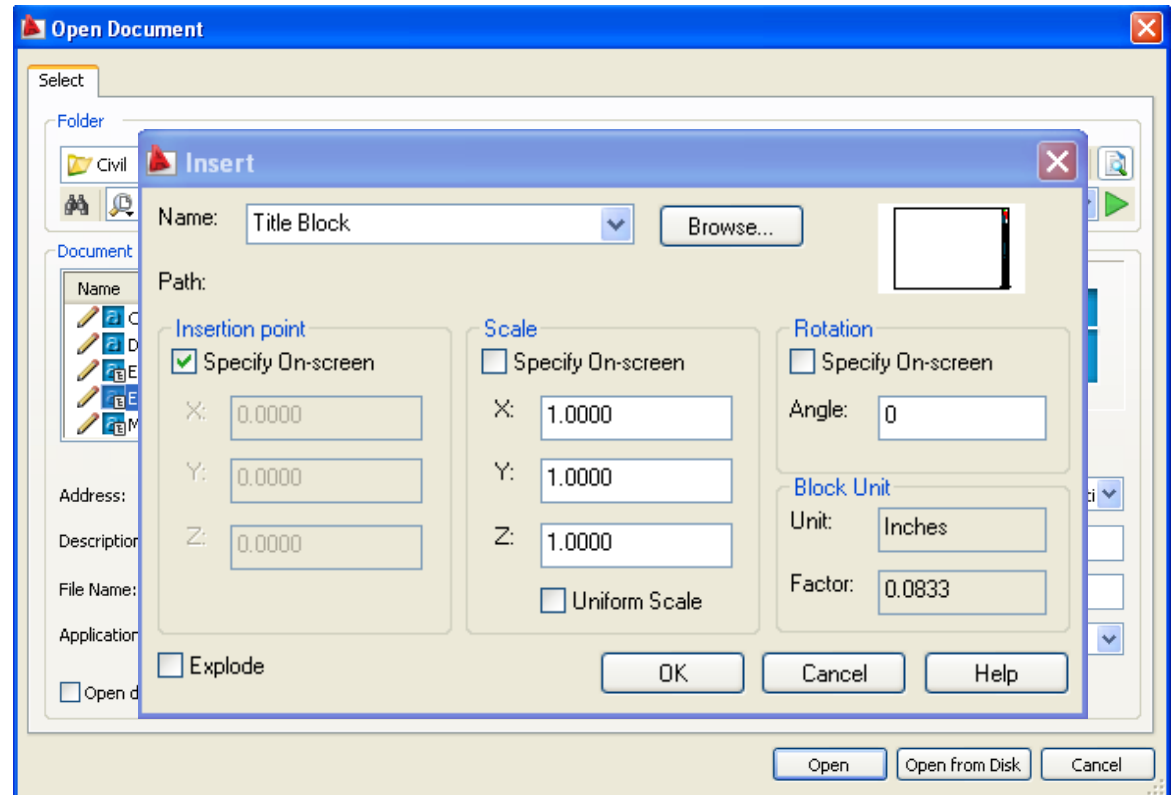
- ProjectWise creates links between data in the ProjectWise database to tags in the DGN file
- Eliminate the need for manual updates to titleblock content in a file (one or many at once)





File Open Dialog Integration

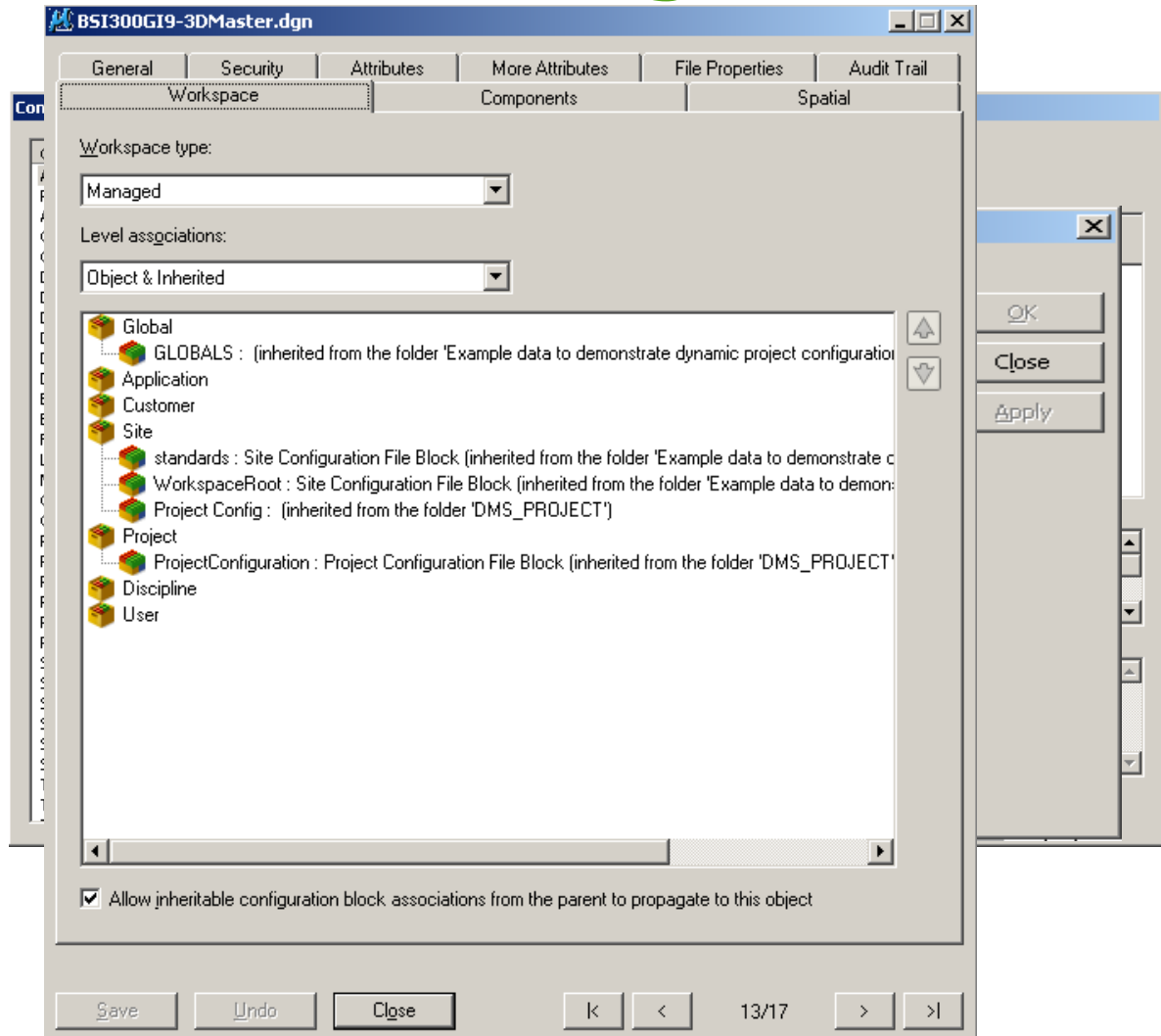
- Microstation and AutoCAD dialogs that access files, browse directly to ProjectWise for content
- Allows users to work in a CAD application as they always have, and effortlessly load content stored in ProjectWise



Workspace Control and Management



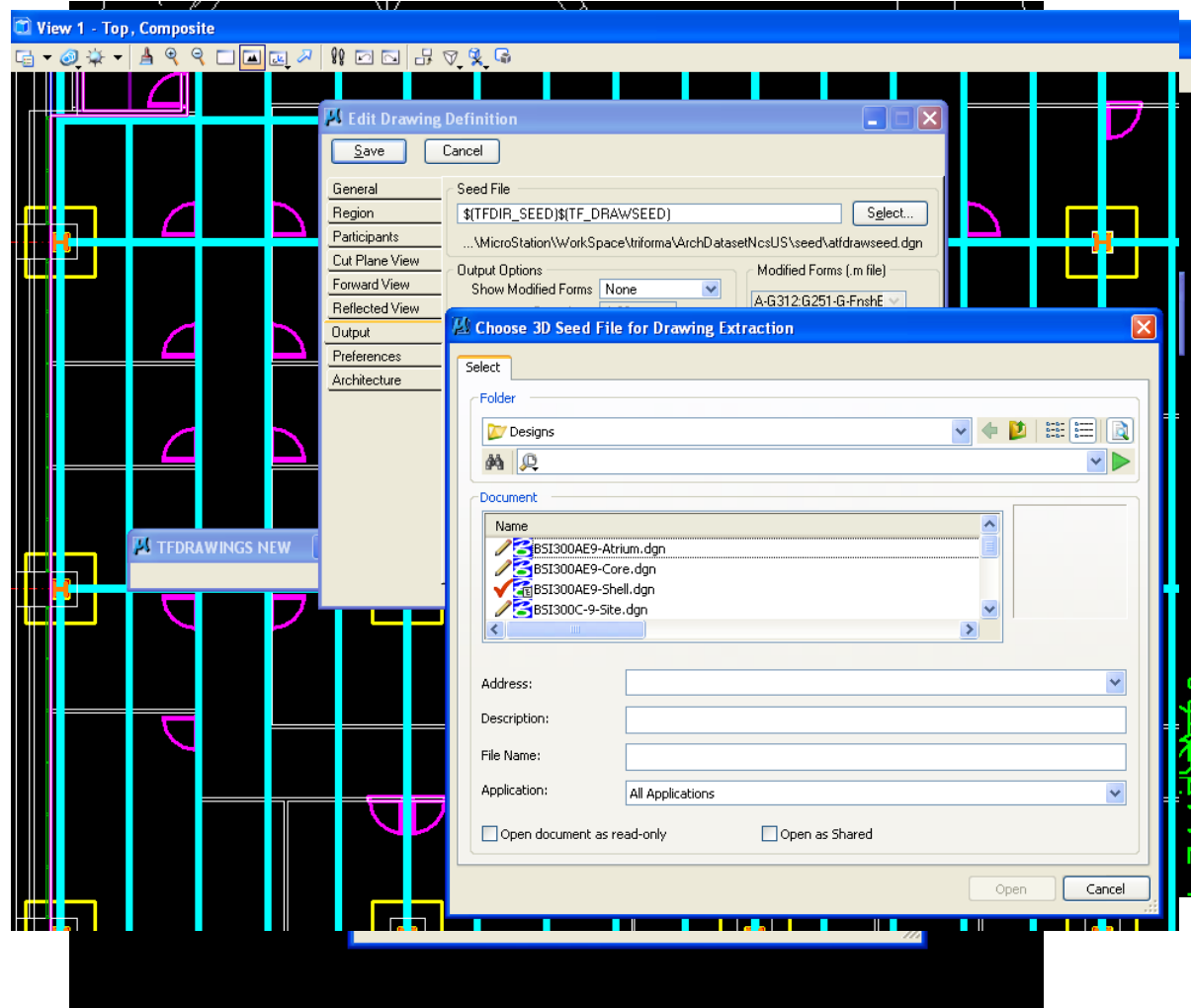
- ProjectWise can manage and control MicroStation workspaces
- Administrators assign exact workspace configuration to content stored in ProjectWise
- Users always load into the correct workspace and there is now a single-source-of-truth for workspace data



MicroStation-Based Product Integrations



- Many Bentley applications based on MicroStation also have ProjectWise CAD integration
- Create and maintain CAD data using the best applications for the project and still get all the benefits of the ProjectWise System



Autodesk Application Support

Autodesk AutoCAD-Based Products that
are Detected by ProjectWise V8i (SELECTseries 1) AutoCAD iDesktop Integration

Product	2006	2007	2008	2009	2010
AutoCAD Architecture	NA	NA	X	X	X
ADT		X	NA	NA	NA
AutoCAD Civil	NA	NA	NA	X	X
AutoCAD Civil 3D	X	X	X	X	X
AutoCAD Electrical					
Land Desktop	X	X	X	X	NA
AutoCAD Inventor					
AutoCAD LT					
AutoCAD Map 3D	X	X	X	X	X
AutoCAD Mechanical					
AutoCAD MEP	NA		X	X	X
AutoCAD P&ID	NA	X	X	X	X
AutoCAD Raster Design					X
Structural Detailing	NA	NA	NA	NA	

X
X
X
NA

Supported in 8.11.5.16 or later

Supported in 8.11.5.47 or later

Supported in 8.11.7.XX or later

No product\version exists

Not supported

Application Integration

Be Communities in **Files**

Hello, John Schown | [Sign out](#) | [Media Help](#) | [Messages \(0\)](#)

[COMMUNITIES](#) | [MEMBERS](#) | [FORUMS](#) | [WIKI](#) | [BLOGS](#) | [RESOURCES](#) | [YOUR ACCOUNT](#) | [Go To BENTLEY.COM](#)

ProjectWise V8i (SELECTseries 1)

[Upload](#)

Did you know you could **upload files** to share with others?

Files in this Folder



POPULAR TAGS

File	Date Added	Downloads	
Bentley applications integration with ProjectWise This document presents the definition of how Bentl...	04-12-2010	83	Download File Size 253.7kB
ProjectWise (V8i SELECTseries 1) Application Compatibility Matrix This document provides the recommended versions of...	02-22-2010	107	Download File Size 86.4kB

[building](#) | [Dimension Driven Design Learning](#) | [MicroStation](#) | [PowerDraft Q42008](#) | [STAAD](#) | [STAADPro Tutorial](#) | [video](#)

» [Browse All Tags](#)

[Upload](#)

See Note 2	Partially Supported - see note for details
See Note 2	Not supported - see note for details
N/A	Not applicable for the application - see note for details

Top Benefits of ProjectWise-CAD Integration

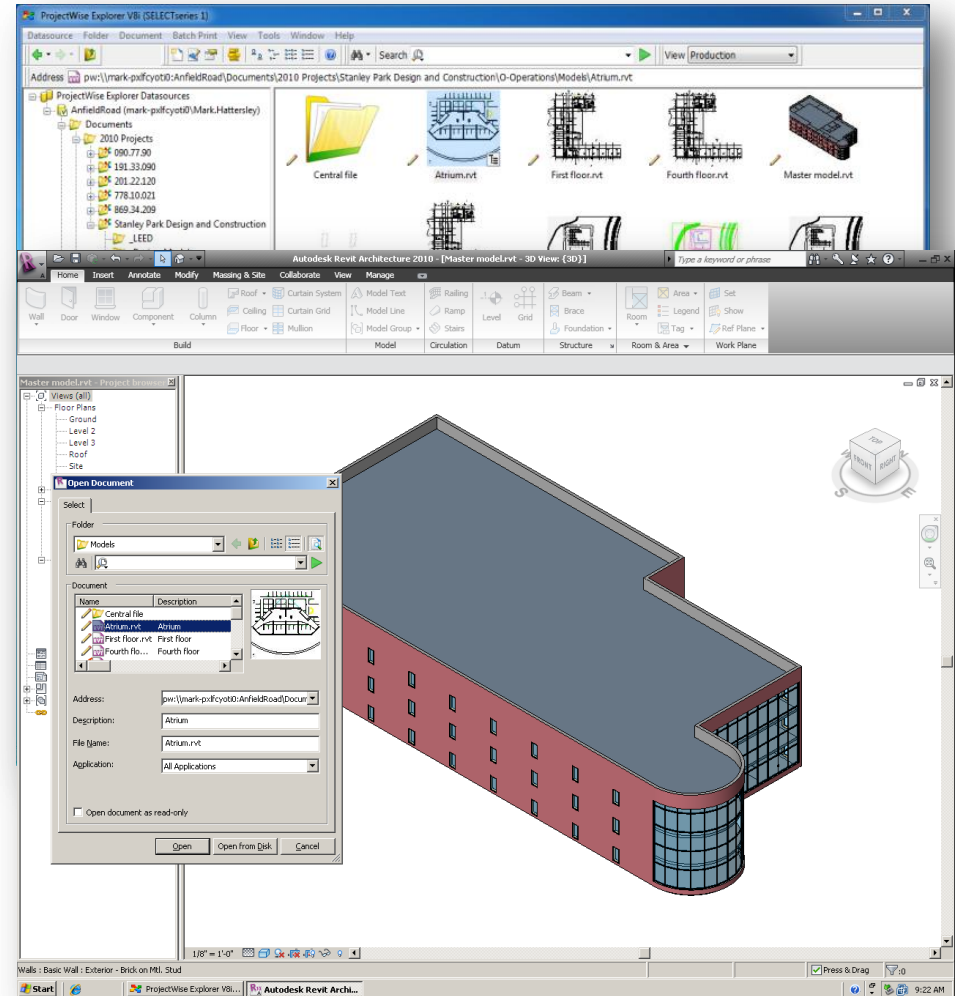
- Always work with the correct version of the file
- Ensure reference file set accuracy
- Adhere to project standards and QA\QC policies
 - Titleblock content
 - Workspace setup and control
- Deliverable management
- Work efficiently

Revit application integration



Revit Integration Add-in

- Manage Revit models and Families
- Leverage ProjectWise capabilities
- Central File Management (worksharing)
- Supports Linked Files



Revit integration demo

Anfield (GERRARD0\mark.hattersley)

- Documents
 - 2008 Projects
 - 2009 Projects
 - 2010 Projects
 - Cunard Yard Survey
 - George Hotel D&B
 - Goodison Park demo
 - Kemlyn Road Resurfacing
 - L4 Master Plan
 - Melwood Office
 - _LEED
 - _Phase_2
 - BIM
 - CAD
 - Families
 - Models
 - Centrals
 - Sheets
 - Templates
 - _Pilot
 - _Prints
 - _Review Models
 - _Specs
 - _Submittals
 - A-Architectural
 - B-Content
 - C-Civil
 - E-Electrical
 - F-Fire Protection
 - I-Interiors
 - Images and PDFs
 - Import
 - L-Landscape
 - M-Mechanical
 - O-Operations
 - P-Plumbing
 - S-Structural
 - X-Subcontractors
 - Saved Searches
 - Stanley Park Design and Cons
 - Standards
 - dmsSystem
 - Components
 - Saved Searches
 - PW_TEST

Name	Description	File Name	Application	Created By	File Size	File Updated By	File Upd...
A-CON-Project-Central.rvt	A-CON-Project-Central....	A-CON-Project-Central....	Autodesk Revit...	Joe.Granville	6,084 KB	Mark.Hattersley	9/8/2010 2:29:3...
A-CON-Project-Central_eperms.dat	A-CON-Project-Central_...	A-CON-Project-Central_...		Joe.Granville	502 KB	Mark.Hattersley	9/8/2010 2:29:3...
A-CON-Project-Central_requests.dat	A-CON-Project-Central_...	A-CON-Project-Central_...		Joe.Granville	1 KB	Mark.Hattersley	9/8/2010 2:29:3...
A-CON-Project-Central_users.dat	A-CON-Project-Central_...	A-CON-Project-Central_...		Joe.Granville	1 KB	Mark.Hattersley	9/8/2010 2:29:3...
A-CON-Project-Central_wperms.dat	A-CON-Project-Central_...	A-CON-Project-Central_...		Joe.Granville	1 KB	Mark.Hattersley	9/8/2010 2:29:3...
MEP-CON-Project-Central.rvt	MEP-CON-Project-Cent...	MEP-CON-Project-Cent...	Autodesk Revit...	Mark.Hattersley	8,780 KB	Mark.Hattersley	9/8/2010 6:37:0...
MEP-CON-Project-Central_eperms.dat	MEP-CON-Project-Cent...	MEP-CON-Project-Cent...		Mark.Hattersley	1,503 KB	Mark.Hattersley	9/8/2010 6:37:0...
MEP-CON-Project-Central_requests.dat	MEP-CON-Project-Cent...	MEP-CON-Project-Cent...		Mark.Hattersley	1 KB	Mark.Hattersley	9/8/2010 6:37:0...
MEP-CON-Project-Central_users.dat	MEP-CON-Project-Cent...	MEP-CON-Project-Cent...		Mark.Hattersley	1 KB	Mark.Hattersley	9/8/2010 6:37:0...
MEP-CON-Project-Central_wperms.dat	MEP-CON-Project-Cent...	MEP-CON-Project-Cent...		Mark.Hattersley	1 KB	Mark.Hattersley	9/8/2010 6:37:0...
S-CON-Project-Central.rvt	S-CON-Project-Central.r...	S-CON-Project-Central.r...	Autodesk Revit...	Joe.Granville	9,224 KB	Joe.Granville	9/8/2010 2:23:5...
S-CON-Project-Central_eperms.dat	S-CON-Project-Central_...	S-CON-Project-Central_...		Joe.Granville	1,210 KB	Joe.Granville	9/8/2010 2:23:5...
S-CON-Project-Central_requests.dat	S-CON-Project-Central_...	S-CON-Project-Central_...		Joe.Granville	1 KB	Joe.Granville	9/8/2010 2:23:5...
S-CON-Project-Central_users.dat	S-CON-Project-Central_...	S-CON-Project-Central_...		Joe.Granville	1 KB	Joe.Granville	9/8/2010 2:23:5...
S-CON-Project-Central_wperms.dat	S-CON-Project-Central_...	S-CON-Project-Central_...		Joe.Granville	1 KB	Joe.Granville	9/8/2010 2:23:5...

View: <Default>

Property name	Property value	Property name	Property value
Name	A-CON-Project-Central.rvt	Description	A-CON-Project-Central.rvt
Folder Name	Centrals	Folder Description	
Environment	Content	Storage	Storage
File Name	A-CON-Project-Central.rvt	File Size	5.94 MB (6,230,016 bytes)
Workflow		State	
Created By	Joe.Granville	Created	9/2/2010 10:51:05 AM
Updated By	Joe.Granville	Updated	9/3/2010 8:53:21 AM
File Updated By	Mark.Hattersley	File Updated	9/8/2010 2:29:37 PM
Status	Checked In	Node	
Version		Sequence	0
File Revision		Conflicts	False
Local File Revision		Local File Refreshed	
Local File Directory		Local Status	
Shareable		MIME Type	unknown

Key Revit integration benefits

- Revit content managed by ProjectWise
 - All ProjectWise benefits
- Single data management process
- ProjectWise infrastructure improves distributed Revit teams productivity and collaboration



Revit Integration Add-in

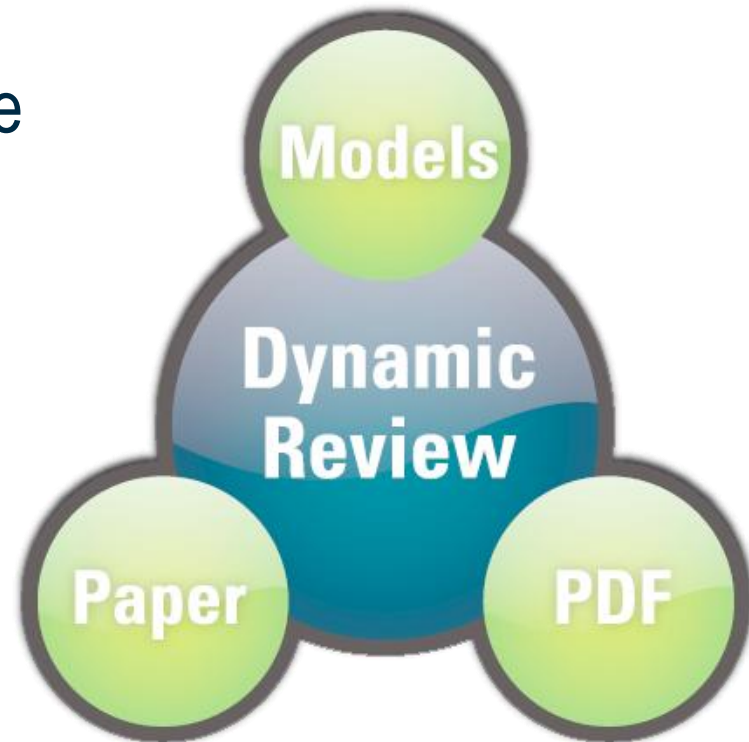
- Initially supports Revit 2009 and 2010
- 32-bit Revit version only
- 64-bit Revit and Revit 2011 will be available with SELECTseries3 release
- Can be installed on top of ProjectWise Explorer V8i (SELECTseries 1 and 2)
- Only requires a ProjectWise Passport

Dynamic Review workflows

Integration with Navigator V8i and Dynamic Plot V8i

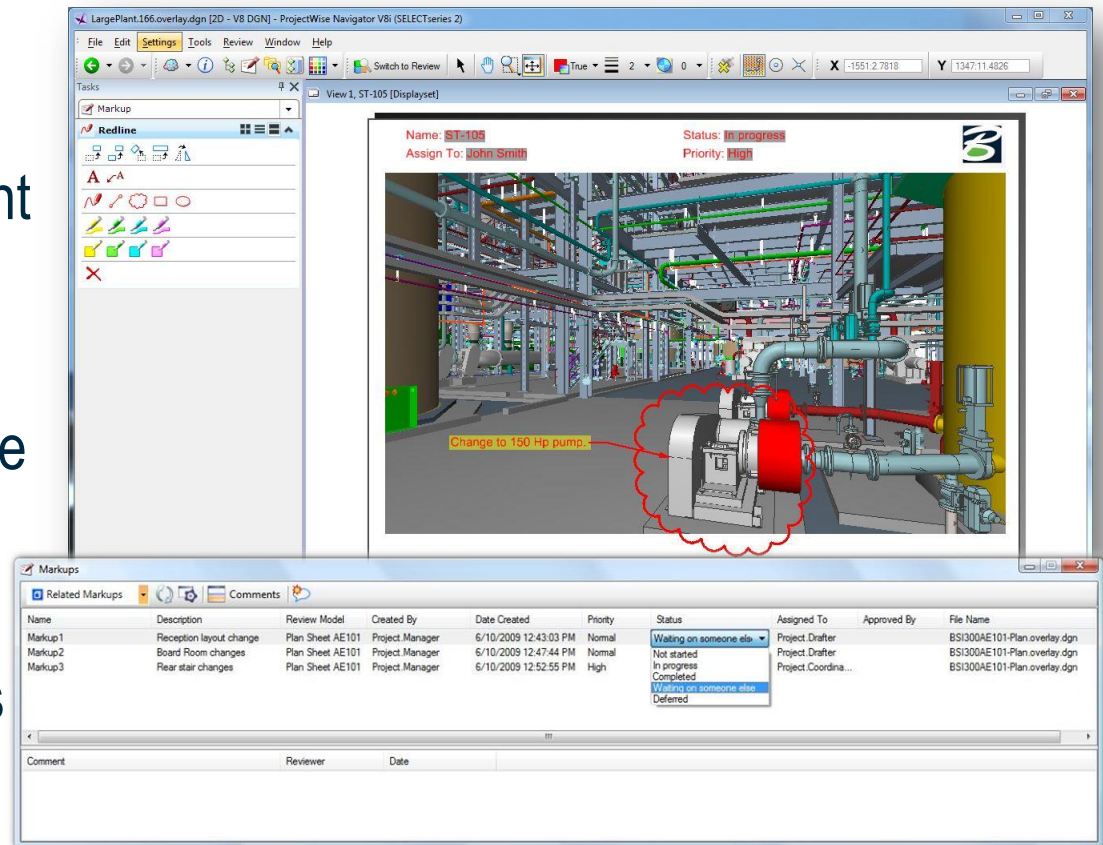
Goal of Dynamic Review?

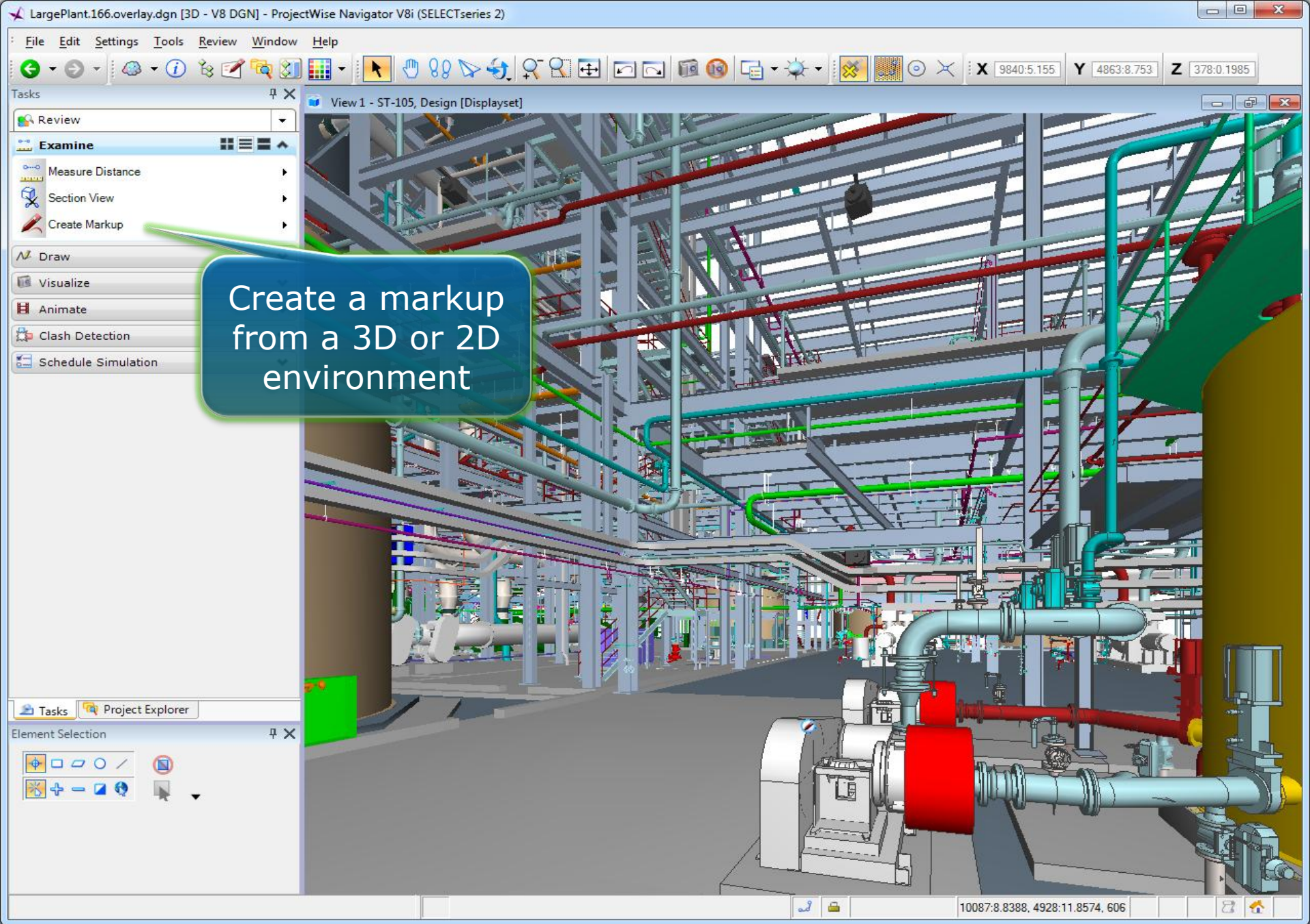
- Enable infrastructure project teams to dramatically increase design and construction productivity via more effective milestone reviews
- One business process regardless of format
- Change management
- Automation



Closed Loop Redline Workflow

- Create markups for 2D and 3D environments
- Track status and comment history for each markup
- Automatically gather markups from ProjectWise and display in MicroStation
- Navigate directly to areas needing change in the design file





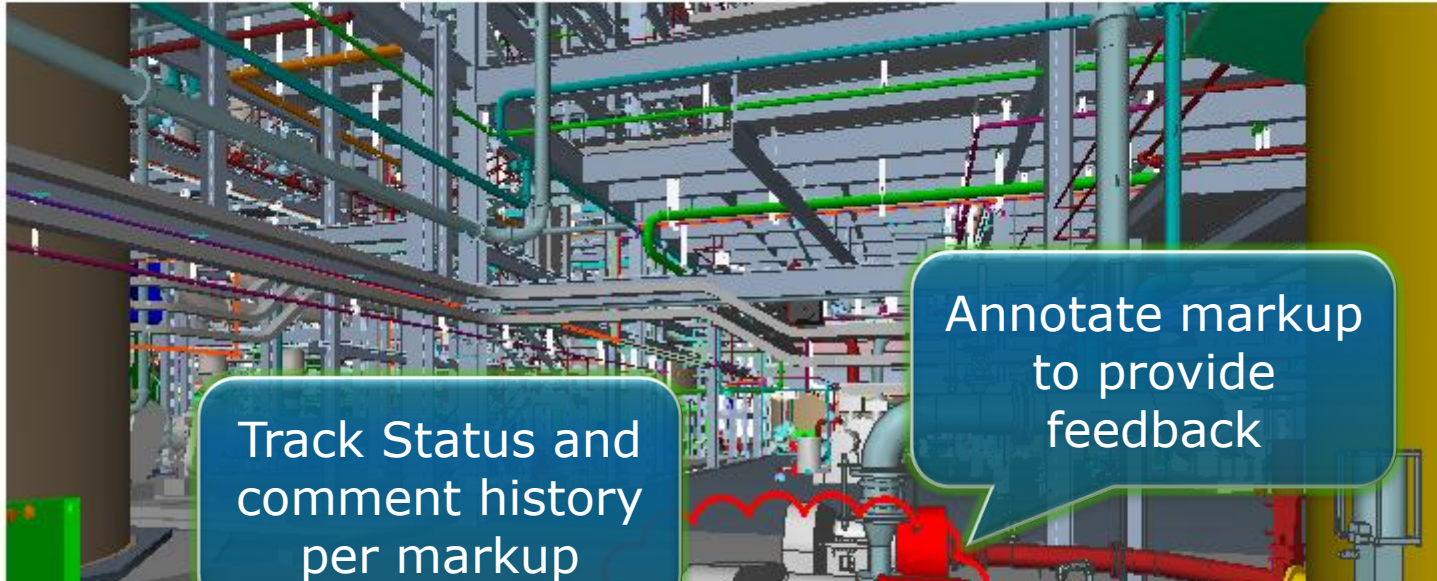
Create a markup
from a 3D or 2D
environment

Name: **ST-105**

Status: **In progress**

Assign To: **John Smith**

Priority: **High**



Track Status and comment history per markup

Annotate markup to provide feedback

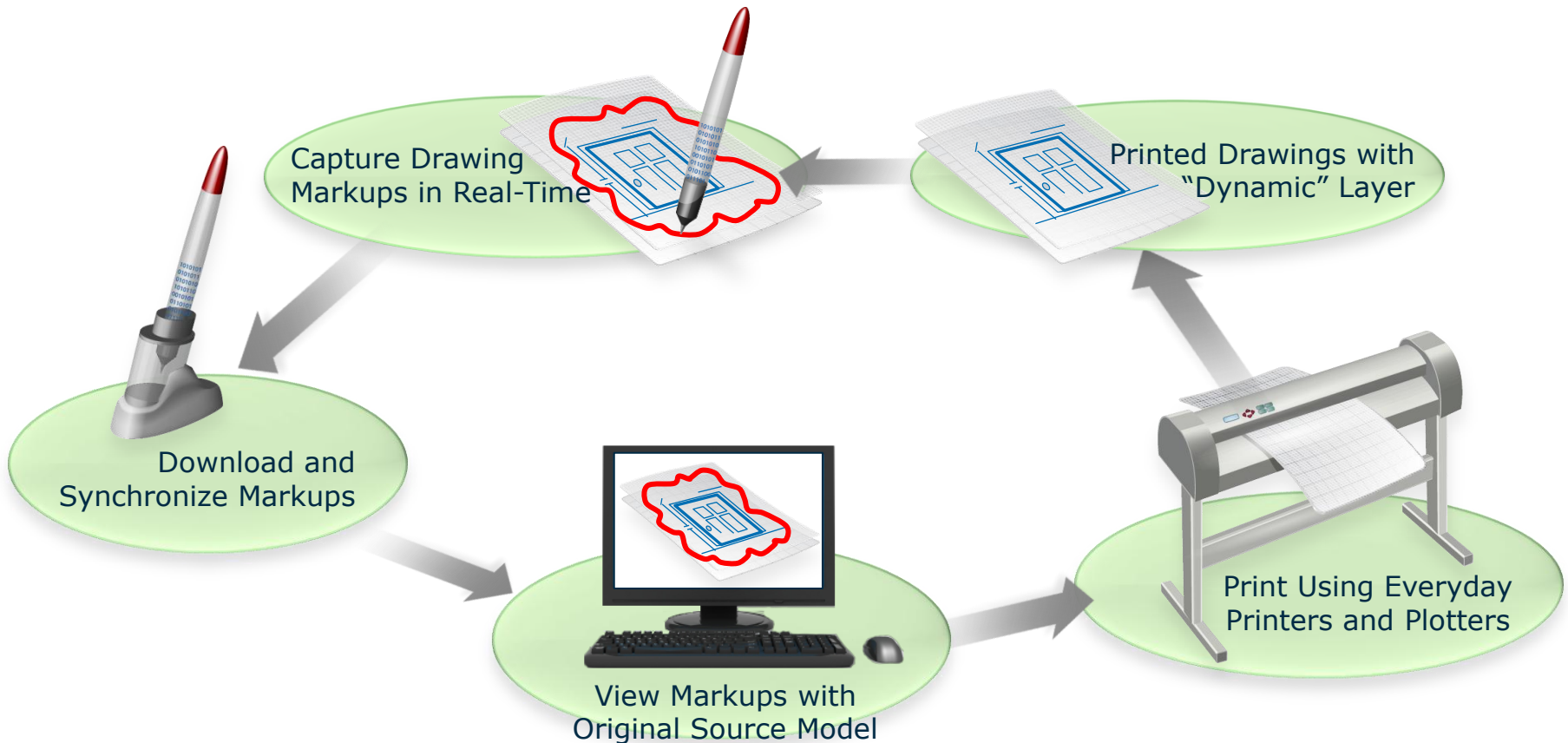
Name	Description	Review Model	Created By	Date Created	Priority	Status	Assigned To
Clash01_eqp vs steel	eqp vs steel	Model	Joe.Granville	4/12/2010 2:51:26 AM	Normal	Not started	
Markup1		Model	Joe.Granville	4/12/2010 2:53:15 AM	High	Not started	mark
Markup2		Model	Joe.Granville	4/22/2010 10:58:58 AM	Normal	Not started	
Markup3		Model	Joe.Granville	4/27/2010 3:55:45 PM	Normal	Not started	
Markup4		Model	Joe.Granville	7/19/2010 11:54:59 AM	Normal	Not started	
Markup5		Model	Joe.Granville	7/19/2010 11:55:26 AM	Normal	Not started	
Markup6		Model	Joe.Granville	7/19/2010 11:56:57 AM	Normal	Not started	

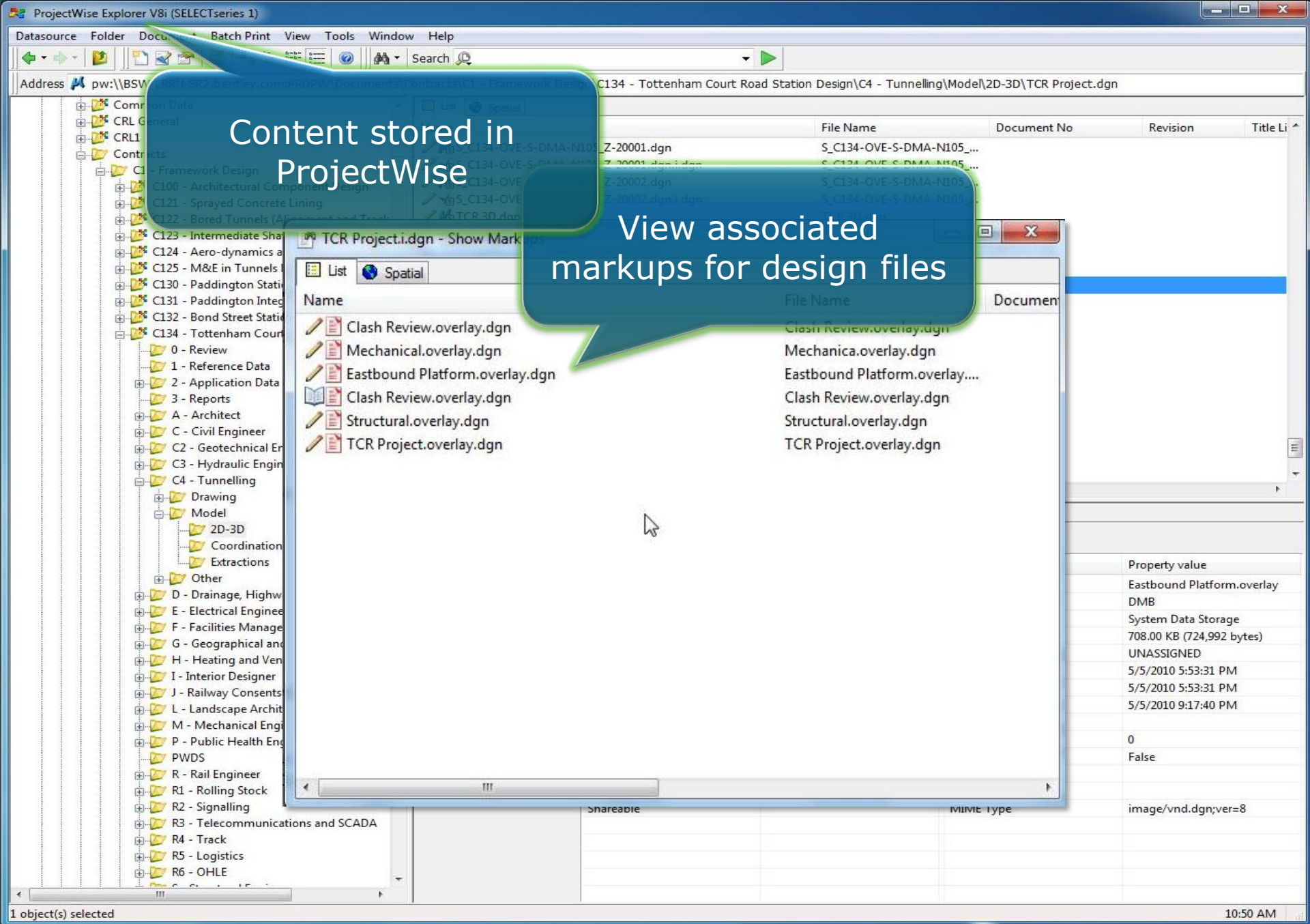
Comment	Reviewer	Date
Priority was changed from "Normal" to "High".	Joe.Granville	4/22/2010 10:57:29 AM
Assigned To was changed from "" to "mark".	Joe.Granville	4/22/2010 10:57:37 AM



ProjectWise Dynamic Plot

Bringing Paper into the Digital Age





Content stored in ProjectWise

View associated markups for design files

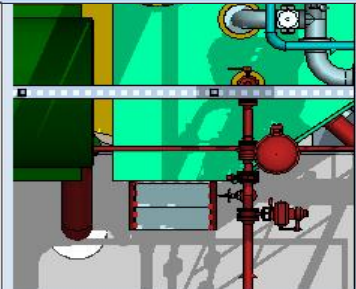
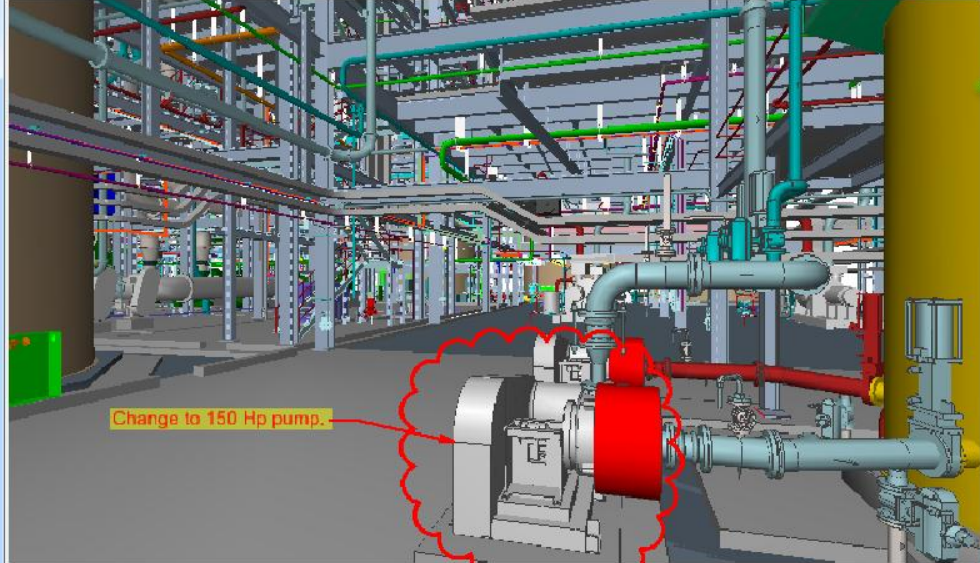
Name	File Name	Document No
Clash Review.overlay.dgn	Clash Review.overlay.dgn	
Mechanical.overlay.dgn	Mechanica.overlay.dgn	
Eastbound Platform.overlay.dgn	Eastbound Platform.overlay....	
Clash Review.overlay.dgn	Clash Review.overlay.dgn	
Structural.overlay.dgn	Structural.overlay.dgn	
TCR Project.overlay.dgn	TCR Project.overlay.dgn	

Property value
Eastbound Platform.overlay
DMB
System Data Storage
708.00 KB (724,992 bytes)
UNASSIGNED
5/5/2010 5:53:31 PM
5/5/2010 5:53:31 PM
5/5/2010 9:17:40 PM
0
False
image/vnd.dgn;ver=8

Resolve markups in MicroStation

Preview annotation without need for paper report

Aggregate markups in design application



Name	Description	Review Model	Created By	Date Created	Priority	Status	Assigned To
Clash01_eqp vs steel	eqp vs steel	Model	Joe.Granville	4/12/2010 2:51:26 AM	Normal	Not started	
Markup1		Model	Joe.Granville	4/12/2010 2:53:15 AM	High	Not started	mark
Markup2		Model	Joe.Granville	4/22/2010 10:58:58 AM	Normal	Not started	
Markup3		Model	Joe.Granville	4/27/2010 3:55:45 PM	Normal	Not started	
Markup4		Model	Joe.Granville	7/19/2010 11:54:59 AM	Normal	Not started	
Markup5		Model	Joe.Granville	7/19/2010 11:55:26 AM	Normal	Not started	
Markup6		Model	Joe.Granville	7/19/2010 11:56:57 AM	Normal	Not started	

Comment	Reviewer	Date
Priority was changed from "Normal" to "High".	Joe.Granville	4/22/2010 10:57:29 AM
Assigned To was changed from "" to "mark".	Joe.Granville	4/22/2010 10:57:37 AM

ProjectWise Dynamic Composition Service

- Automated process for i-model generation
 - MicroStation
 - AutoCAD
 - AutoPlant XM & V8i (PDW (3D), P&ID (2D), ProSteel XM & V8i)
 - PlantSpace Design Series (3D)
 - Bentley Structural
 - OpenPlant P&ID
- Based on ProjectWise Automation Services
 - Delivers a new document processor for i-model creation
- i-Models can be automatically created when:
 - Changes are made to source files
 - Changes are made to references of source files
 - Source files workflow states are advanced
 - User-defined ProjectWise metadata are changed

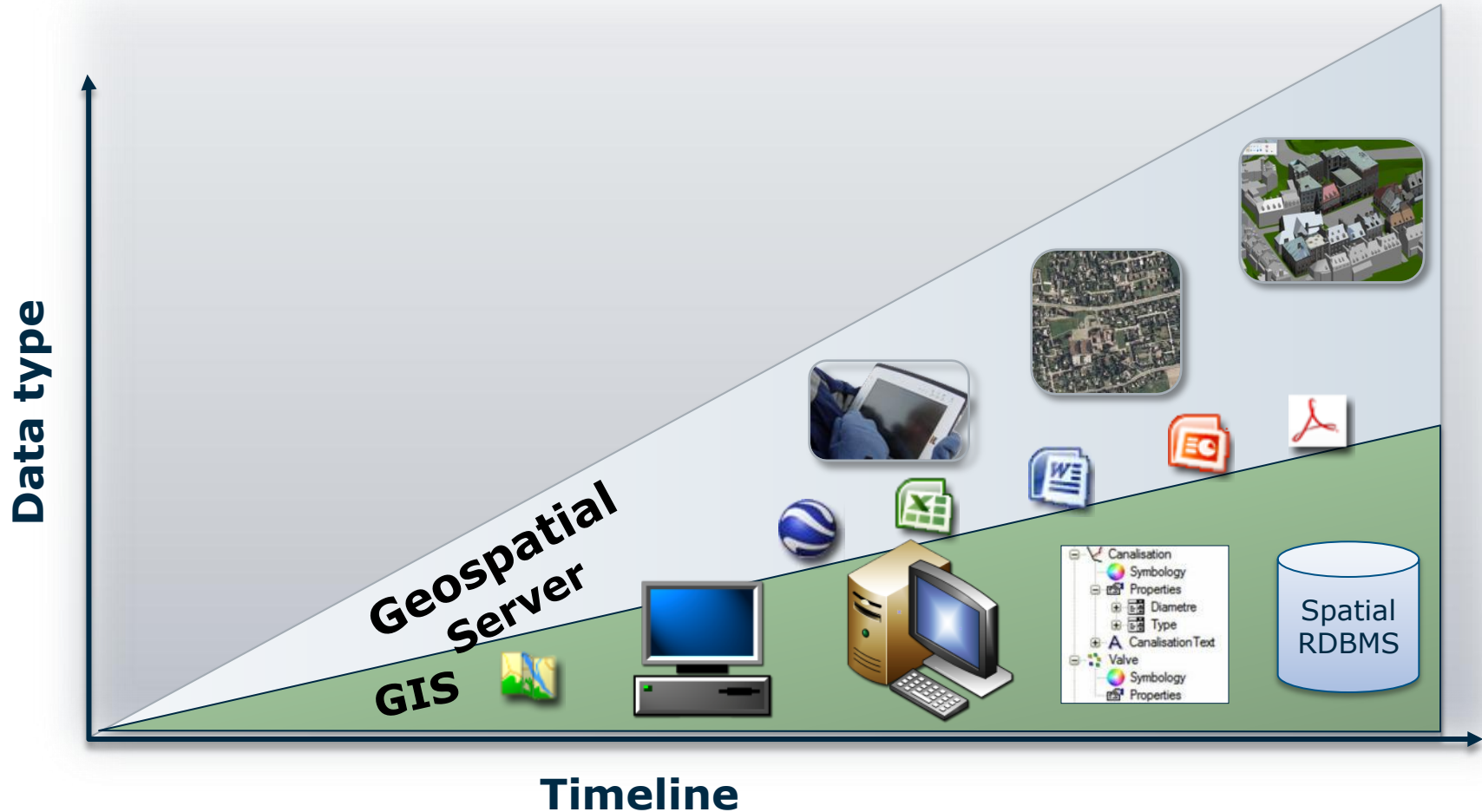
ProjectWise benefits for Dynamic Review

- ProjectWise provides:
 - Change management
 - Status visibility
 - Version control
 - Application Integration with other participating programs:
 - ProjectWise Navigator
 - ProjectWise i-Model Composer
 - MicroStation
 - Bentley View
 - Automation
 - ProjectWise Dynamic Composition Service
 - ProjectWise PDX Manager Composition Service (early 2010)

ProjectWise and GIS data

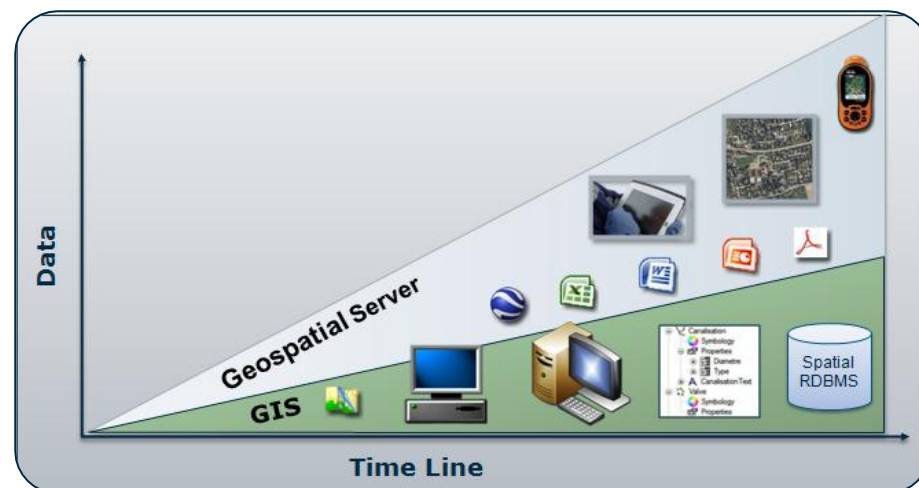
Bentley Geospatial Server and
Geo Web Publisher solutions overview

Bentley Geospatial Server (ProjectWise)



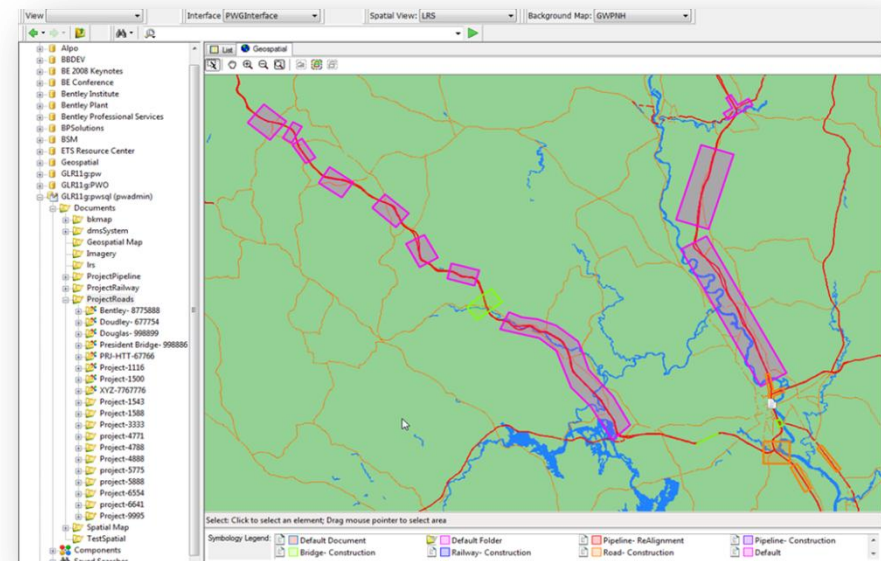
Bentley Geospatial Server

- A portfolio of the following products:
 - ProjectWise Geospatial Management Module
 - ProjectWise Integration Server
 - ProjectWise Connector for Oracle
 - ProjectWise InterPlot Server
- Can add ProjectWise Connector for ArcGIS as an option
- Integrated for geospatial needs
- Main Capabilities:
 - Document Management, Workflows
 - Spatial Indexing/Searching
 - Spatial Database Editing
 - CAD and GIS integration
 - Plotting



Bentley Geospatial Server enables to...

- Have teams using different CAD and GIS tools working on a single source of truth data repository
- Manage heterogeneous data (GIS data, document, images, projections, ...)
- Easily find the data you own about a given location on earth
- Know if the data you are about to work with is the latest and greatest or not
- Make sure that colleagues have access to the data they need to perform their tasks, no less, no more
- Edit spatial databases.

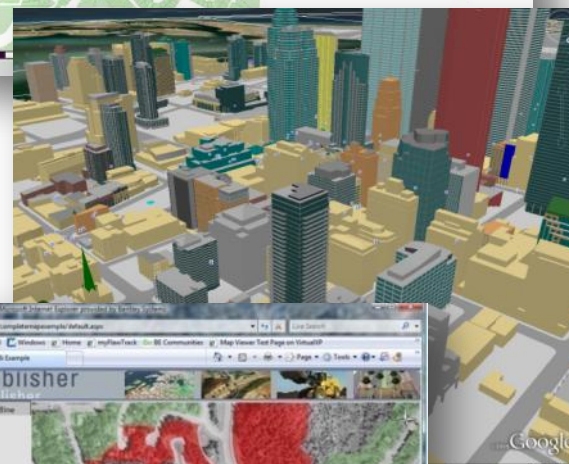
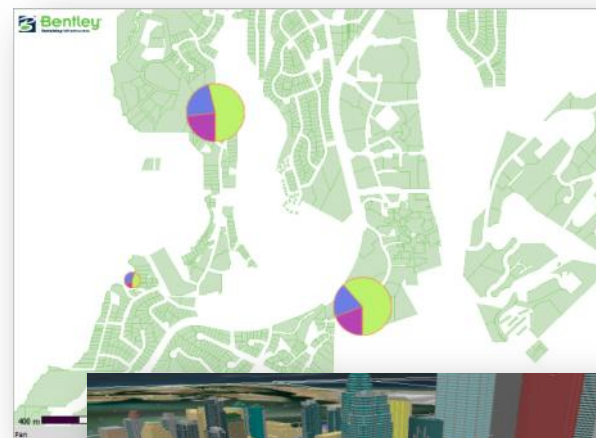


Geo Web Publisher

- It is a Web GIS
 - Easy to implement, high performance
 - Brings together multiple data sources, and databases
 - Supports collaboration workflows
 - OGC compliant, WMS/WFS server
- Advanced tools for GIS Web applications creation and administration
- End user tools for map navigation, querying, analysis, reporting, redlining, editing

Geo Web Publisher enables to...

- Make data available to a wide audience
- Because you need to share 3D city data with citizens, mayor, city council, managers
- Integrate with many data types in a single portal
- “Deliver” GIS tools to casual users
- Allow Web GIS users to create reports, prints, etc. from Web GIS applications
- Create and maintain Web GIS applications, be able to rapidly meet Web users needs
- Integrate GIS and mapping data with other enterprise wide systems



ProjectWise Spatial , Bentley Geospatial Server , ArcGIS Connector

Functionality	ProjectWise Spatial	Bentley Geospatial Server	Bentley Geospatial Server + ArcGIS Connector
Static CAD/Raster Background Maps	X	X	X
Dynamic CAD/Raster Background Maps	X (requires Bentley Publisher)	X	X
Spatial Locations	X	X	X
Coordinate Systems	X	X	X
Spatial Search	X	X	X
Scan CAD File Spatial Extent	X	X	X
Scan ESRI Shapefile Extent	X	X	X
Load Spatial Location (SLF file)	X	X	X
Advanced Background Maps (streamed CAD/raster maps, GIS layers, spatial database layers, WMS)		X	X
ESRI ArcMap iDesktop Integration		X	X
DGN/XFM Feature Component Indexing		X	X
ESRI Personal Geodatabase Support		X	X
Geocoding by attributes		X	X
Linear Referencing		X	X
Live viewing and transactional editing of Oracle Spatial		X	X
Disconnected viewing and transactional editing of Oracle Spatial		X	X
Disconnected viewing and transactional editing of ESRI ArcSDE (Enterprise Geodatabase)			X
Batch plotting		X	X

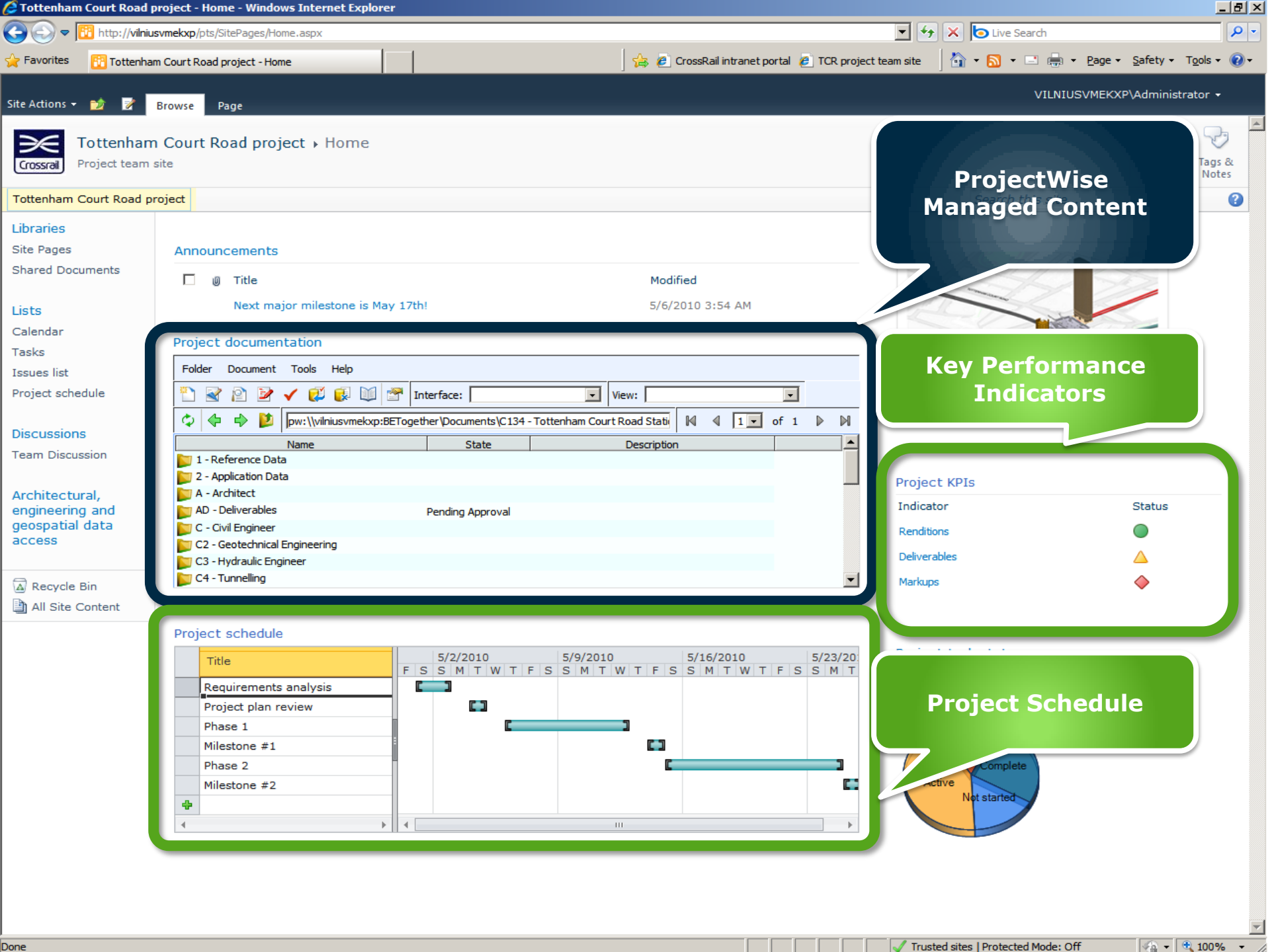
Value proposition



Integration with generic DMSs and other enterprise applications

Integration with other enterprise solutions

- Generic DMSs:
 - SharePoint
 - FileNet, Documentum, LiveLink, others
- ERP, CRM, Contract Management
- ProjectWise Web and Web View Servers V8i
 - SharePoint and standalone IIS integration
- Content Management Interoperability Services (CMIS)



ProjectWise
Managed Content

Key Performance
Indicators

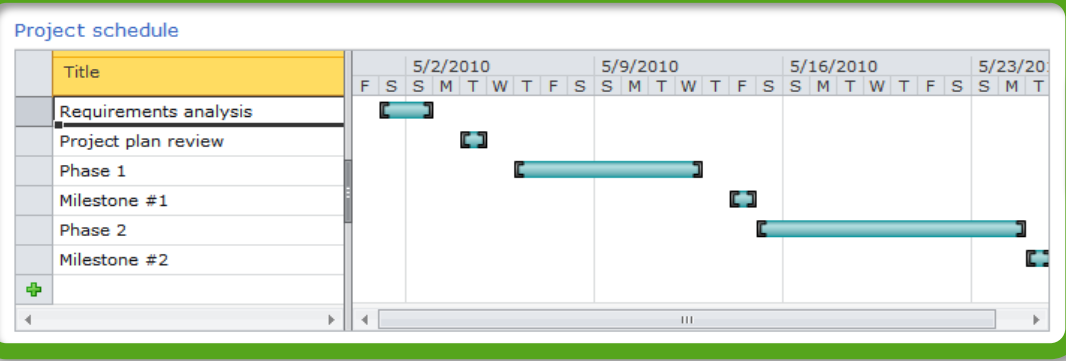
Project KPIs

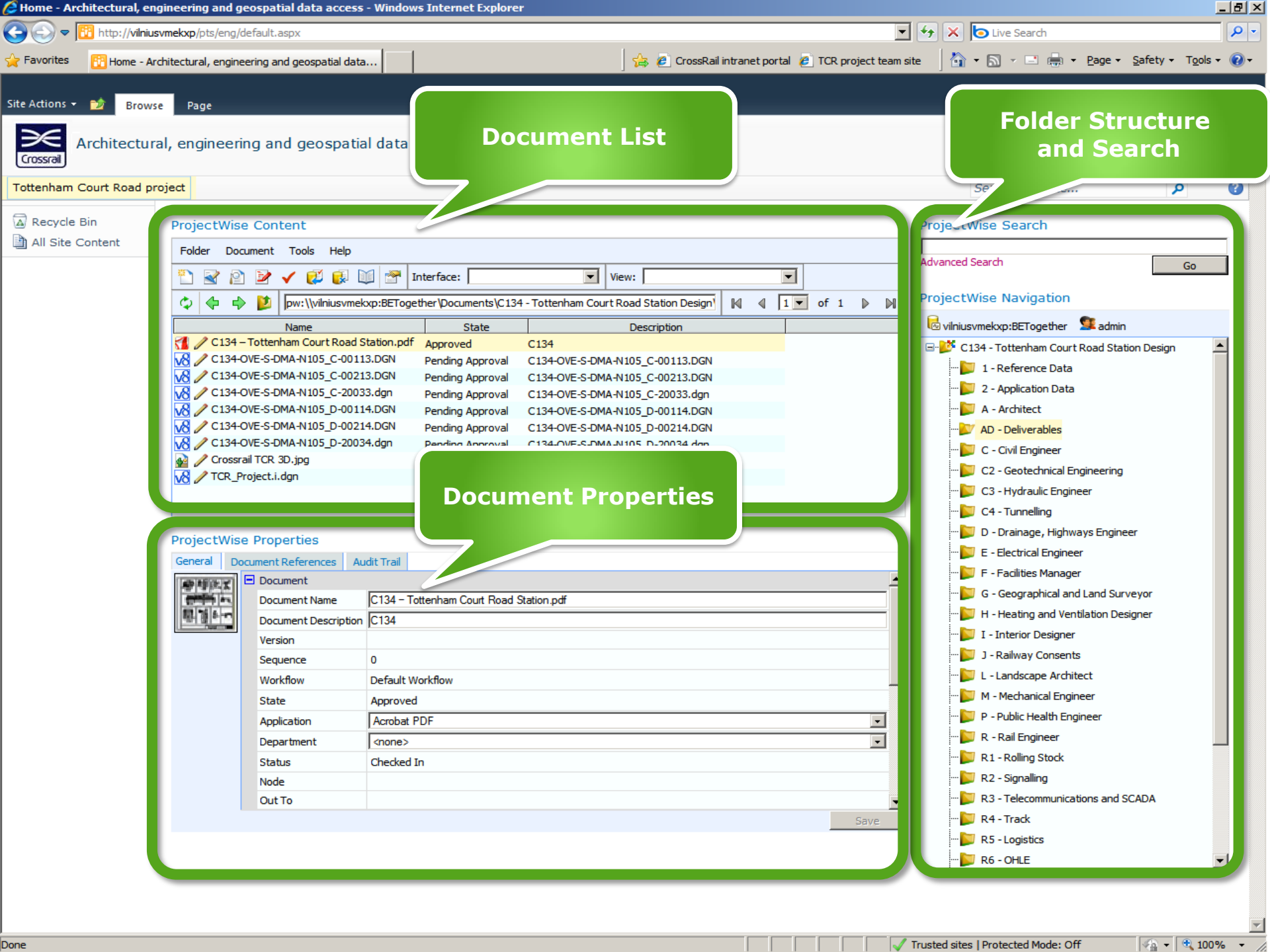
Indicator	Status
Renditions	●
Deliverables	▲
Markups	◆

Project Schedule

Project documentation

Folder	Document	Tools	Help
pw: \\vilniusvmekxp:BEtogether\Documents\C134 - Tottenham Court Road Stati			
Name	State	Description	
1 - Reference Data			
2 - Application Data			
A - Architect			
AD - Deliverables	Pending Approval		
C - Civil Engineer			
C2 - Geotechnical Engineering			
C3 - Hydraulic Engineer			
C4 - Tunnelling			





Document List

ProjectWise Content

Folder	Document	Tools	Help
pw:\wilniusvmexp:BETogether\Documents\C134 - Tottenham Court Road Station Design			
Name	State	Description	
C134 - Tottenham Court Road Station.pdf	Approved	C134	
C134-OVE-S-DMA-N105_C-00113.DGN	Pending Approval	C134-OVE-S-DMA-N105_C-00113.DGN	
C134-OVE-S-DMA-N105_C-00213.DGN	Pending Approval	C134-OVE-S-DMA-N105_C-00213.DGN	
C134-OVE-S-DMA-N105_C-20033.dgn	Pending Approval	C134-OVE-S-DMA-N105_C-20033.dgn	
C134-OVE-S-DMA-N105_D-00114.DGN	Pending Approval	C134-OVE-S-DMA-N105_D-00114.DGN	
C134-OVE-S-DMA-N105_D-00214.DGN	Pending Approval	C134-OVE-S-DMA-N105_D-00214.DGN	
C134-OVE-S-DMA-N105_D-20034.dgn	Pending Approval	C134-OVE-S-DMA-N105_D-20034.dgn	
Crossrail TCR 3D.jpg			
TCR_Project.i.dgn			

Document Properties

ProjectWise Properties

General	Document References	Audit Trail
Document		
Document Name	C134 - Tottenham Court Road Station.pdf	
Document Description	C134	
Version		
Sequence	0	
Workflow	Default Workflow	
State	Approved	
Application	Acrobat PDF	
Department	<none>	
Status	Checked In	
Node		
Out To		

Folder Structure and Search

ProjectWise Search

- Advanced Search
- #### ProjectWise Navigation
- vilniusvmexp:BETogether admin
 - C134 - Tottenham Court Road Station Design
 - 1 - Reference Data
 - 2 - Application Data
 - A - Architect
 - AD - Deliverables
 - C - Civil Engineer
 - C2 - Geotechnical Engineering
 - C3 - Hydraulic Engineer
 - C4 - Tunnelling
 - D - Drainage, Highways Engineer
 - E - Electrical Engineer
 - F - Facilities Manager
 - G - Geographical and Land Surveyor
 - H - Heating and Ventilation Designer
 - I - Interior Designer
 - J - Railway Consents
 - L - Landscape Architect
 - M - Mechanical Engineer
 - P - Public Health Engineer
 - R - Rail Engineer
 - R1 - Rolling Stock
 - R2 - Signalling
 - R3 - Telecommunications and SCADA
 - R4 - Track
 - R5 - Logistics
 - R6 - OHLE

ProjectWise Content

Folder Document Tools Help

View: []

pw:\\vlh64b2K8esx1:EA_simcorp27\Documents\GEO\toronto\ 1 of 1

Name	Description	File Name
aamsplsh.bmp	aamsplsh	aamsplsh.bmp
arrowright.ico	arrowright	arrowright.ico
TorontoStreets0.dgn	TorontoStreets0	TorontoStreets0...
TorontoStreets1.dgn	TorontoStreets1	TorontoStreets1...
TorontoStreets2.dgn	TorontoStreets2	TorontoStreets2...
TorontoStreets3.dgn	TorontoStreets3	TorontoStreets3...
TorontoStreets4.dgn	TorontoStreets4	TorontoStreets4...
TorontoStreets5.dgn	TorontoStreets5	TorontoStreets5...
TorontoStreets6.dgn	TorontoStreets6	TorontoStreets6...
TorontoStreets7.dgn	TorontoStreets7	TorontoStreets7...
TorontoStreets8.dgn	TorontoStreets8	TorontoStreets8...

Geospatially located documents and folders

ProjectWise Spatial Content

Folder Document Tools Help View

Select: Click to select an element; Drag mouse pointer to select area

ProjectWise Navigator Web Part

- SharePoint 2010, 2007 and stand-alone IIS integration
- Interactive 3D model visualization
- 2D plan set review
- Simple analysis capabilities: content search, dimension measuring, business data review.

Name	State	File Name
2D file - C100-ATK-A-DDC-CR001_Z-14000.i.dgn	Draft	2D file - C100-ATK-A-DDC-CR001_Z...
3D wireframe file - TCR_Project.i.dgn	Pending Approval	3D wireframe file - TCR_Project.i.dgn
Bentley Architecture Imperial-ThreeD-3D.i.dgn	Approved	Bentley Architecture Imperial-Three...
Web view model.i.dgn	Pending Approval	Web view model.i.dgn



Microsoft®
SharePoint® 2010



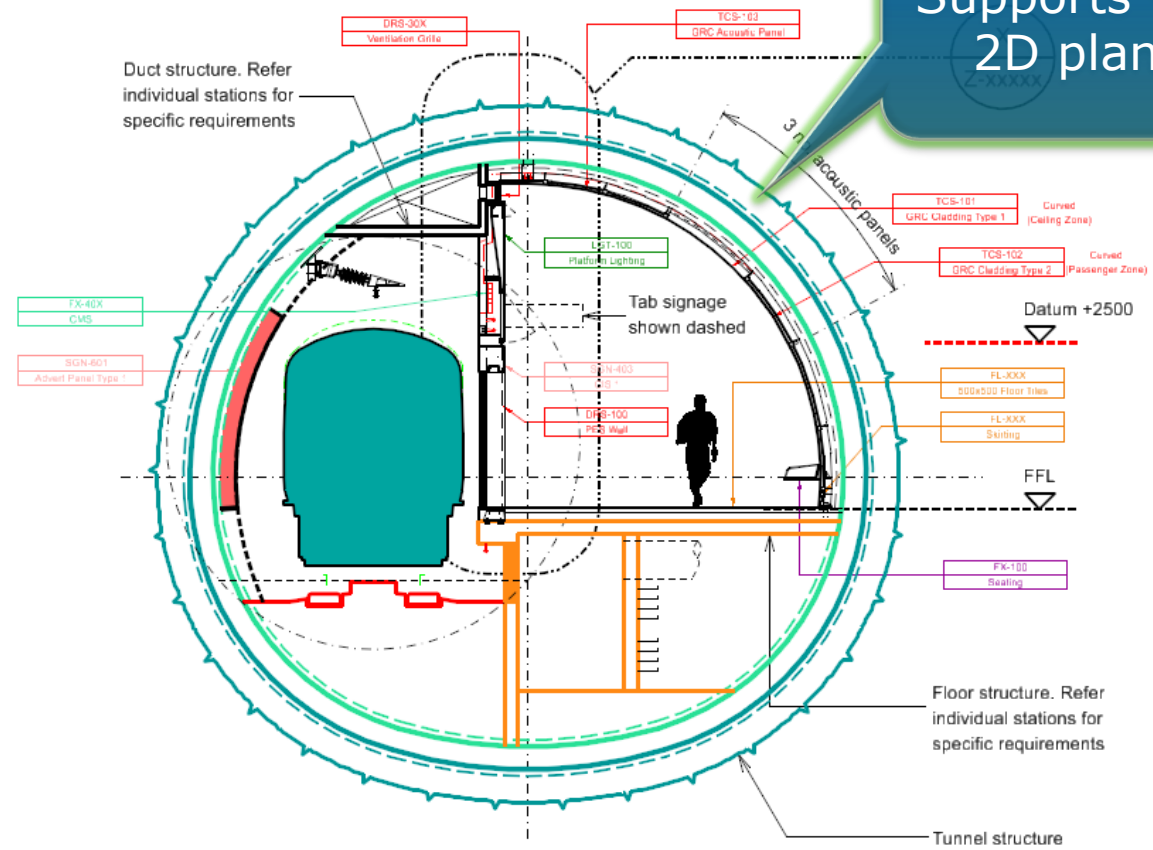
Tottenham

- Recycle Bin
- All Site Content

Business to

Inter 2 inside

- Models Views Items
- A1
- A1_2D file - C100-ATK-A-DDC-CR
 - CR-ENV2-M_Traffic and trans
 - Default
 - G22-M_Floors
 - G2524-M_Walls Internal Glaze
 - G252-M_Walls internal
 - G333-M_Internal finishes wall
 - G54-M_Lighting
 - G5713-M_Closed circuit televi
 - G572-M_Fire
 - G631-M_Ductwork
 - G6331-M_Cables
 - G74-M_Fittings-furniture-equip
 - H22413-M_Linings sprayed cr
 - L3311-M_In situ concrete Ma
 - L35-M_Structural metal
 - L6813-M_Waterproofing
 - L811-M_Street furniture
 - Level 63
 - R02101-M_Running Rail
 - RZ31-M_Structure Gauge
 - Watermark
 - Z11-T_Title annotation
 - Z12-T_Status stamps
 - Z132-T_Revision annotation
 - Z222-T_General notes
 - Z22-T_Annotation
 - Z23-P_Dimensions
 - Z23-T_Dimensions
 - Z2-P_Drawing frame
 - Z2-T_Drawing frame
 - Z43-M_Centrelines
 - Z5-P_Drawing symbols



Supports viewing 2D plan sets

01 Platform PSD Section



ing from using a Tube

is also ects are asant ments, ments to

Current Navigator Web Part limitations

- Supports viewing operations only, markup capabilities to follow (preliminary targeted for the next release)
- Single file packaged i-models supported only
- Geo-coordinated references are not currently supported.
- Point cloud display is not currently supported
- Embedded raster references are not currently supported.
- Dynamic Views are not currently supported
- i-models downloaded and visualized through the i-model viewer will not display textures
 - As textures are not currently embedded in i-models.
 - Further, the viewer does not include the default textures delivered with PowerProducts as this would result in unnecessary bloat of the control download/delivery.

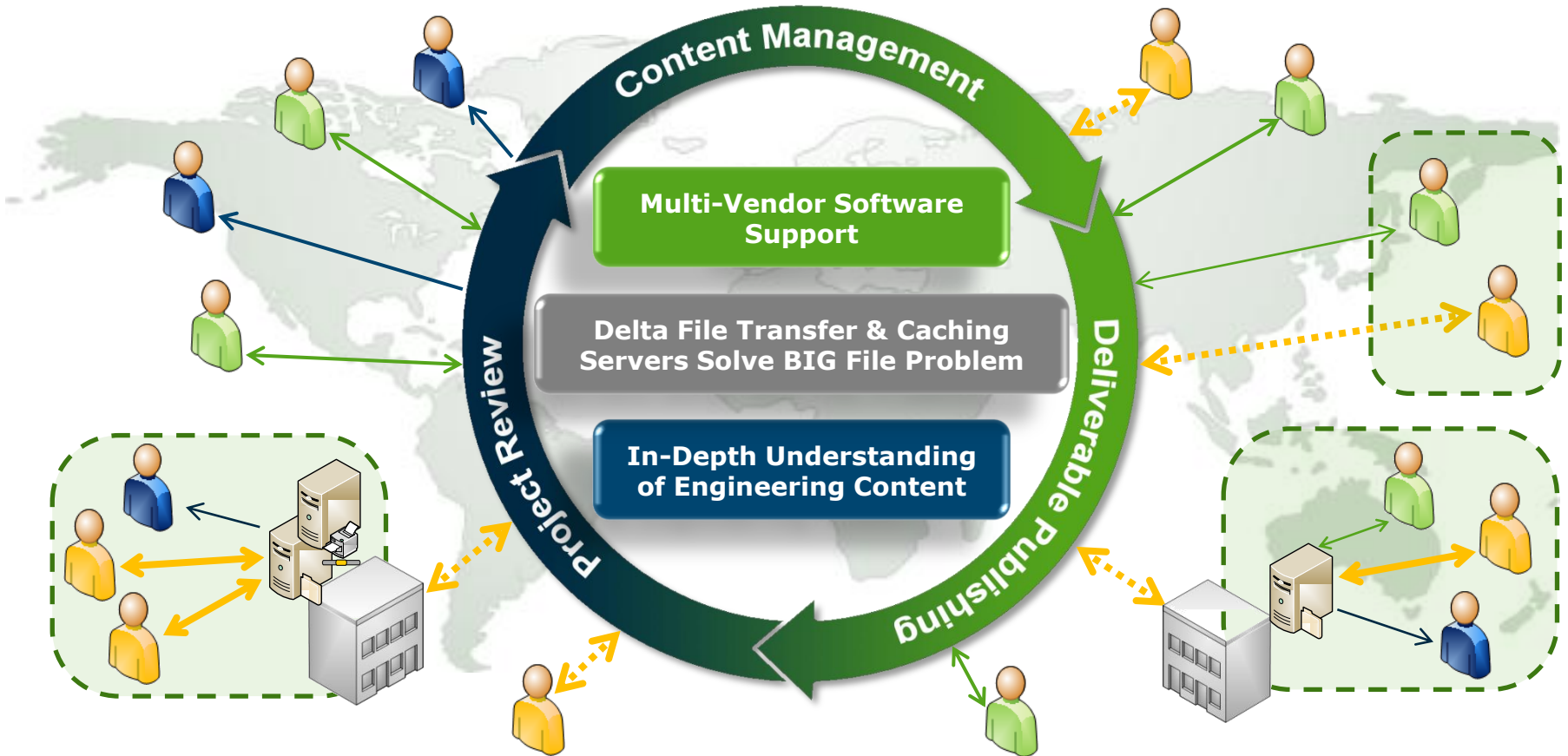
CMIS implementation considered

- Content Management Interoperability Services is a specification for improving interoperability between Enterprise Content Management systems
- Approved and administered by standards body, OASIS
- Participants in the process include:
 - EMC, IBM, Microsoft, Open Text, Oracle, SAP and Alfresco
- Would enable:
 - Server to server communication between PW and other IT back-office products in an enterprise
 - Simplify the process of distributing documents from one DMS system to another.

Integration with other enterprise applications

- ProjectWise Web and Web View Server V8i to integrate ProjectWise stored data with SharePoint Server
- CMIS considered as a generic way to integrate with enterprise systems :
 - Generic DMSs
 - EPR
 - Project Management
 - Contract Management

ProjectWise is a Project Team Collaboration Platform for the Design and Construction of Capital Projects



Bentley
ProjectWise V8i

Engineering Project Collaboration Platform

Questions?