

Bentley Map – Useful Features

Keith Raymond, Product Manager Bentley Map

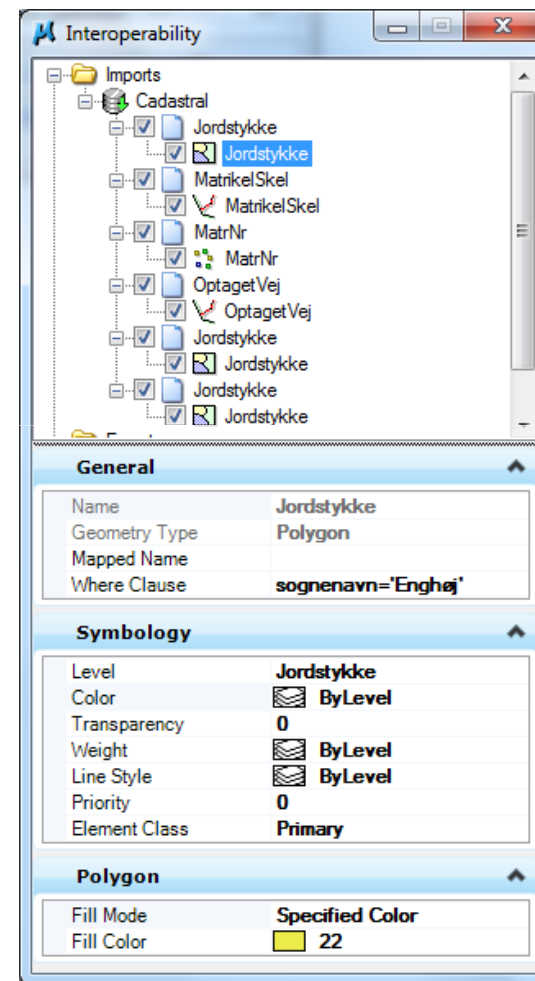


Overview

- Interoperability
- Map Manager
- Thematic Mapping
- Annotation
- Print Preparation
- Data Cleanup

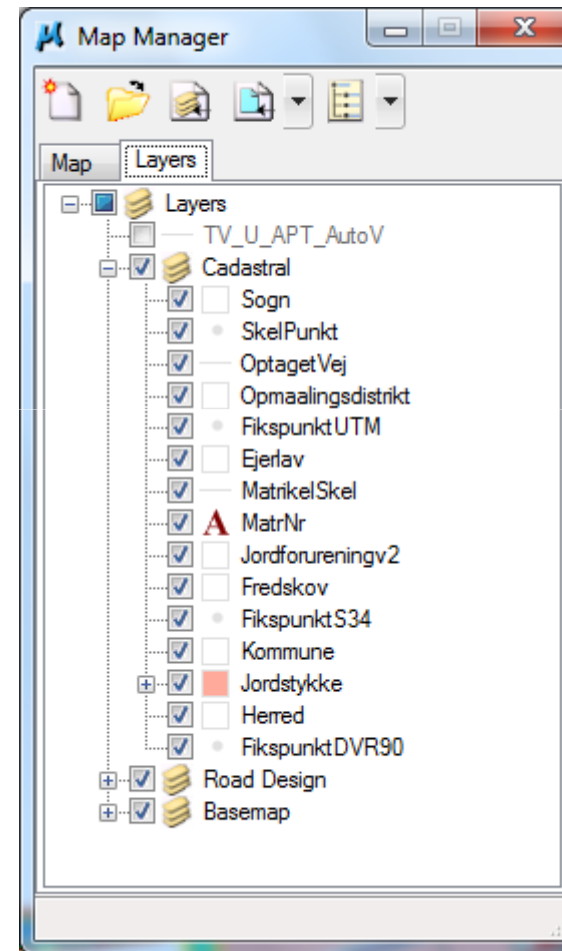
Interoperability

- Import and reference a variety of GIS data types
 - SHP, GML, MapInfo, Oracle Spatial, ODBC
- Resymbolize on import
- Select certain properties
- Save process



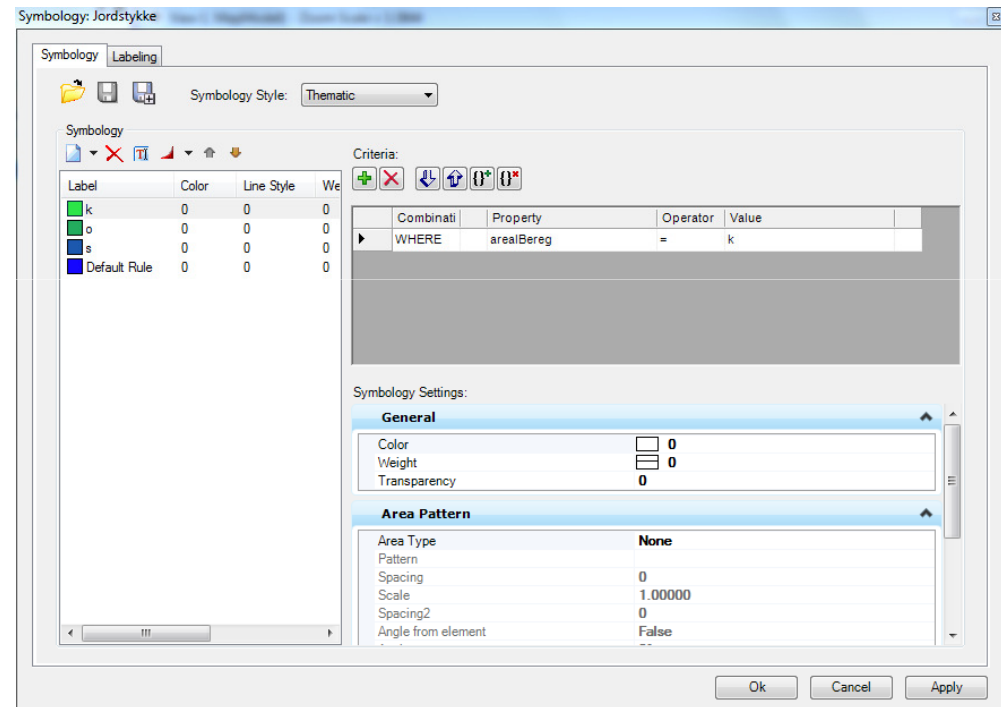
Map Manager

- Organize your features in a simple interface
- Create feature groups for easy access
- Resymbolize features easily
- Access most Bentley Map features
 - Buffer
 - Thematics
 - Annotation



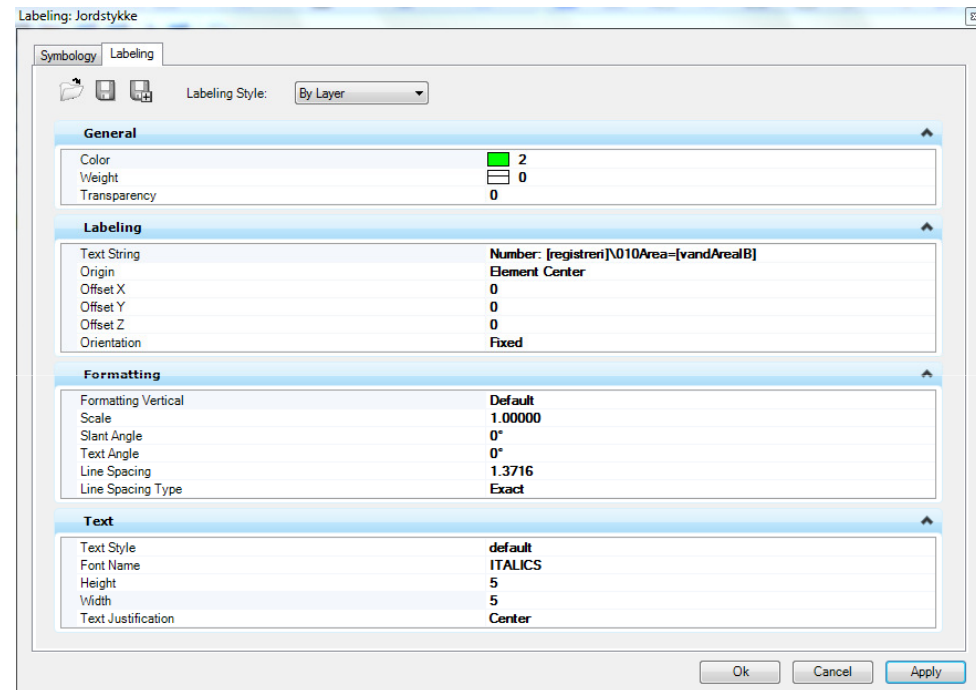
Thematic Mapping

- Automatic class definition
- Full control over symbology
- Save thematic definitions



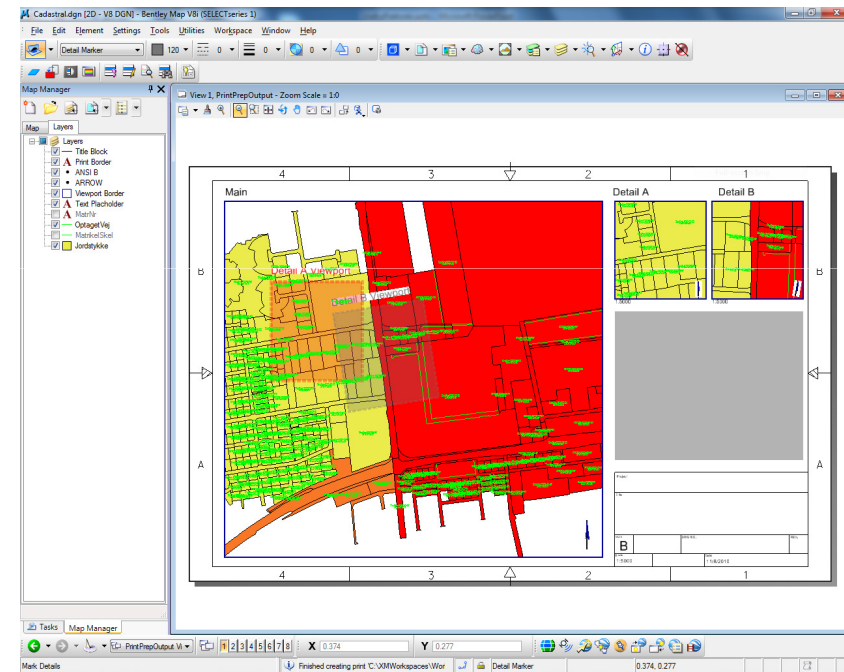
Annotation

- Simple or thematic annotations
- Full control over text symbology
- Many placement options
- Multiple attributes, line breaks, functions
- Annotations can be saved as labels



Print Preparation

- Quick printing for maps or work prints
- Multiple view ports and placement options
- User defined templates
- Substitute user input, variables



Data Cleanup

- Find dangles, overlaps, duplicates, similar
- Chain elements
- Thin elements
- Move to different level or automatically fix
- Works in fenced area

